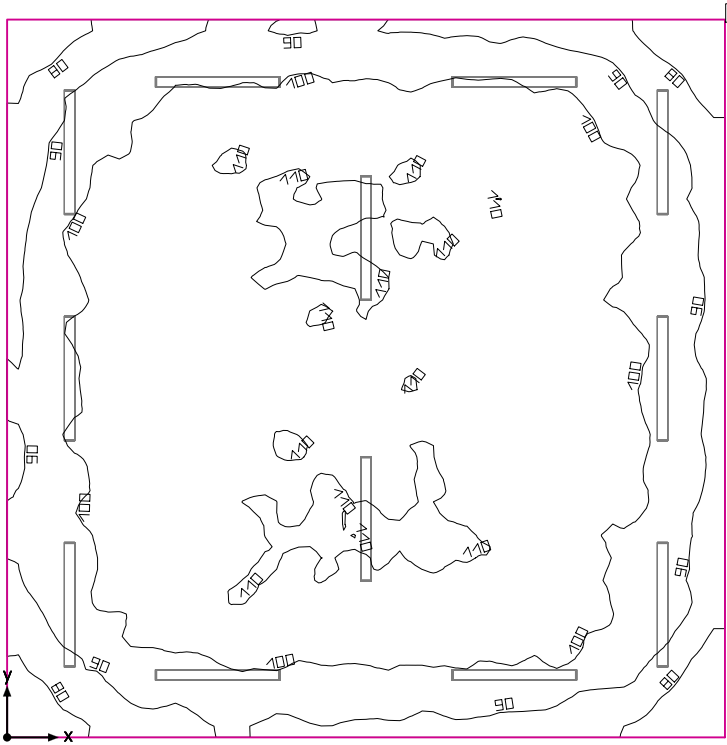


Room 1



Clearance height: 12.000 ft, Reflection factors: Ceiling 70.0%, Walls 50.0%, Floor 20.0%, Light loss factor: 0.90

Workplane

Surface	Result	Average (Target)	Min	Max	Mean/Min	Max/Min
1 Workplane (Room 1)	Perpendicular illuminance (adaptive) [fc] Height: 2.500 ft, Wall zone: 0.000 ft	99.8 (≥ 92.9)	66.3	113	1.51	1.70

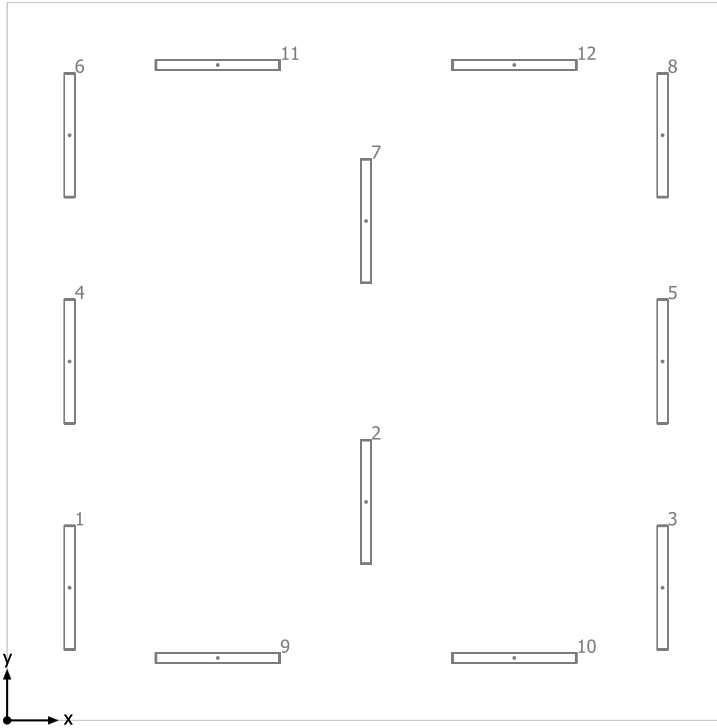
#	Luminaire	Φ(Luminaire) [lm]	Power [W]	Luminous efficacy [lm/W]
12	TechBrite - T443SSUBCXX00P0-18W 3-LED TUBES	8018	54.0	148.5
Total via all luminaires		96216	648.0	148.5

Lighting power density: 1.22 W/sq ft = 0.11 W/sq ft/10 fc (Floor area of room 529.01 sq ft)

Consumption: 1450 kWh/a of maximum 1750 kWh/a

The energy consumption quantities do not take into account light scenes and their dimming levels.

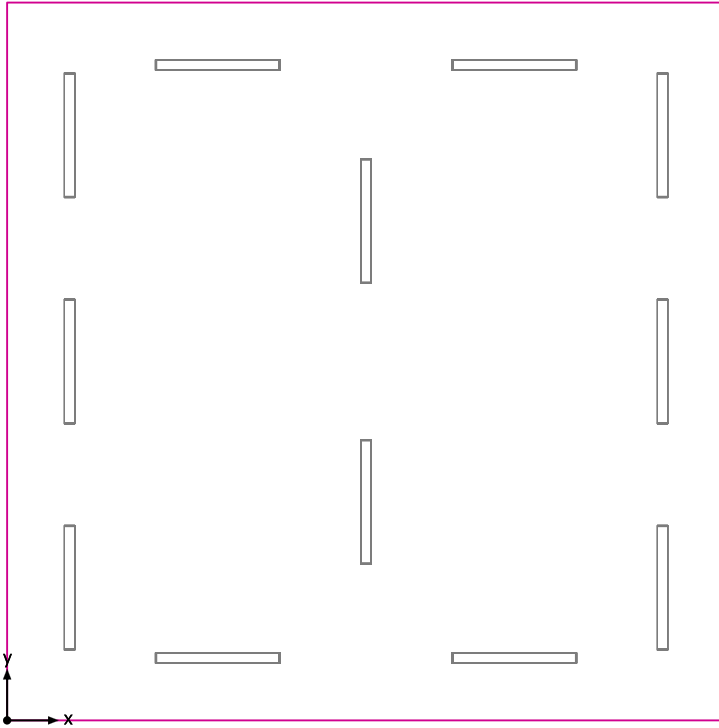
## Room 1



TechBrite T443SSUBCXX00P0-18W 3-LED TUBES

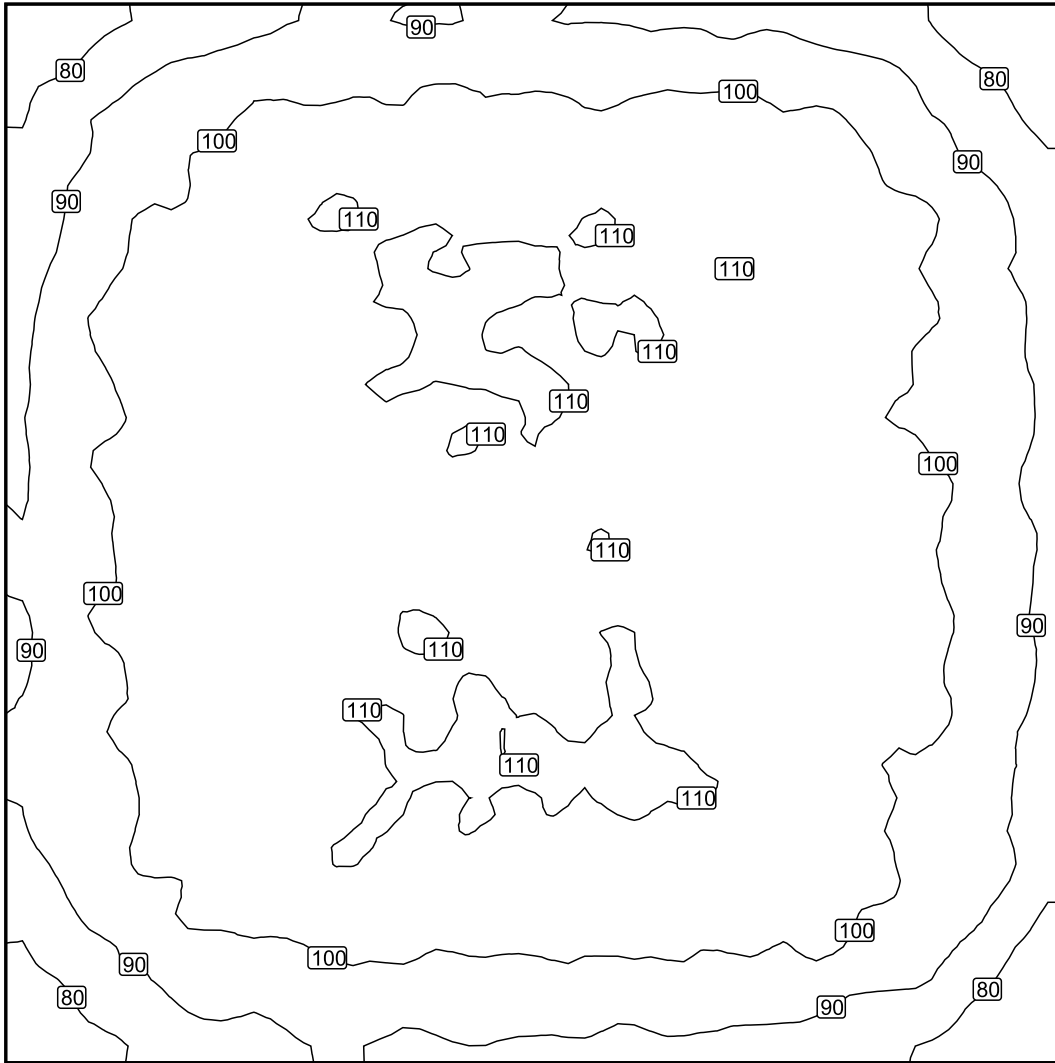
No.	X [ft]	Y [ft]	Mounting height [ft]	Light loss factor
1	2.000	4.250	12.000	0.90
2	11.500	7.000	12.000	0.90
3	21.000	4.250	12.000	0.90
4	2.000	11.500	12.000	0.90
5	21.000	11.500	12.000	0.90
6	2.000	18.750	12.000	0.90
7	11.500	16.000	12.000	0.90
8	21.000	18.750	12.000	0.90
9	6.750	2.000	12.000	0.90
10	16.250	2.000	12.000	0.90
11	6.750	21.000	12.000	0.90
12	16.250	21.000	12.000	0.90

## Workplane (Room 1) / Perpendicular illuminance (adaptive)



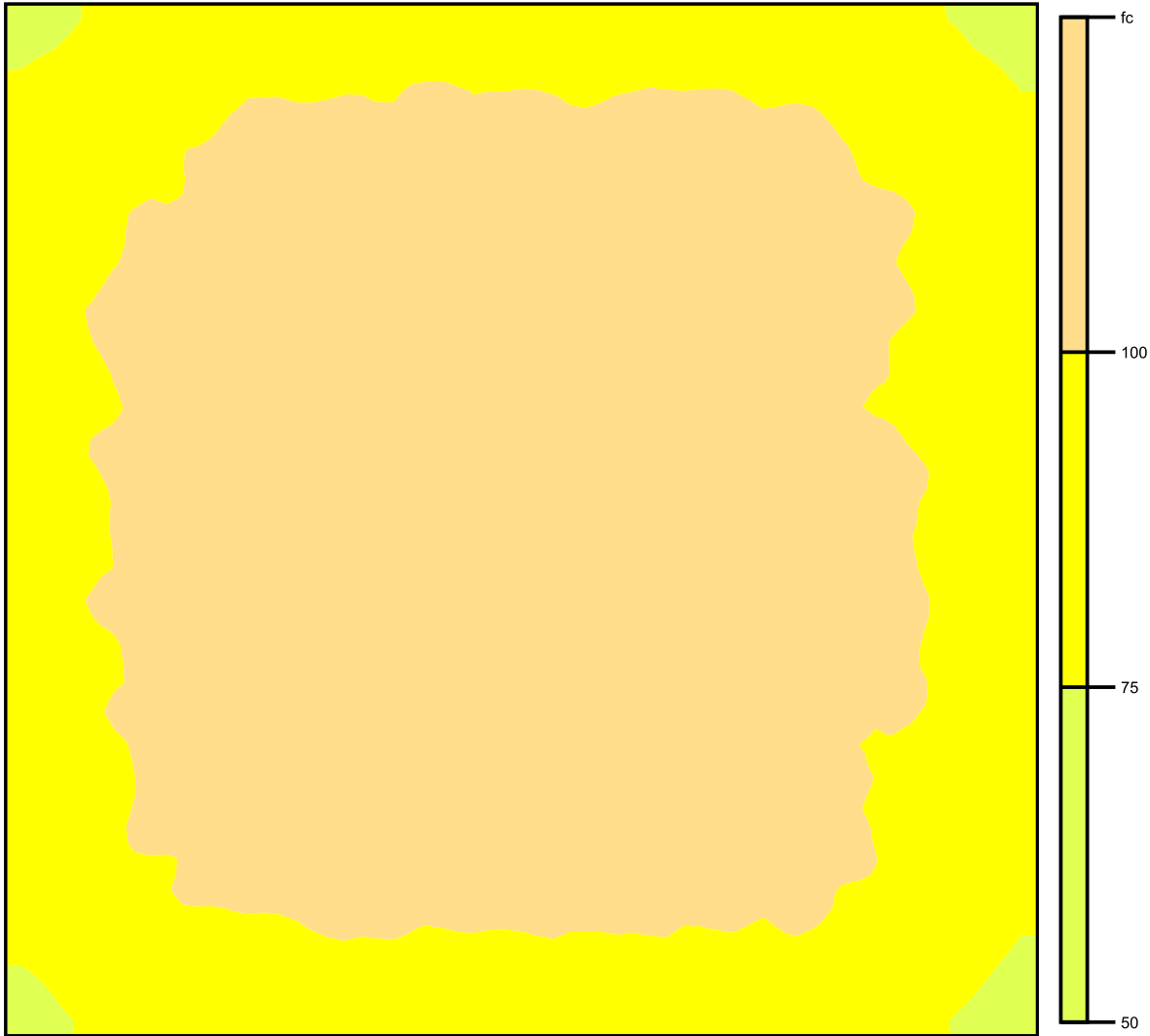
Workplane (Room 1): Perpendicular illuminance (adaptive) (Surface)  
Light scene: Light scene 1  
Average: 99.8 fc (Target:  $\geq 92.9$  fc), Min: 66.3 fc, Max: 113 fc, Mean/Min: 1.51, Max/Min: 1.70  
Height: 2.500 ft, Wall zone: 0.000 ft

## Isolines [fc]



Scale: 1 : 50

## False colors [fc]



Scale: 1 : 50

## Value grid [fc]

+78	+91	+94	+95	+96	+94	+94	+90	(76)
+89	+99	+105	+105	+105	+107	+105	+100	+88
+95	+106	+108	(111)	+110	+109	+108	+104	+92
+93	+105	+108	+107	+110	+106	+104	+100	+94
+96	+101	+110	+106	+107	+106	+104	+102	+92
+93	+107	+104	+110	+108	+108	+105	+103	+93
+95	+104	+106	(111)	(111)	(111)	+106	+100	+91
+90	+100	+106	+106	+106	+108	+104	+101	+90
+78	+91	+95	+94	+94	+94	+94	+88	(76)

Scale: 1 : 50