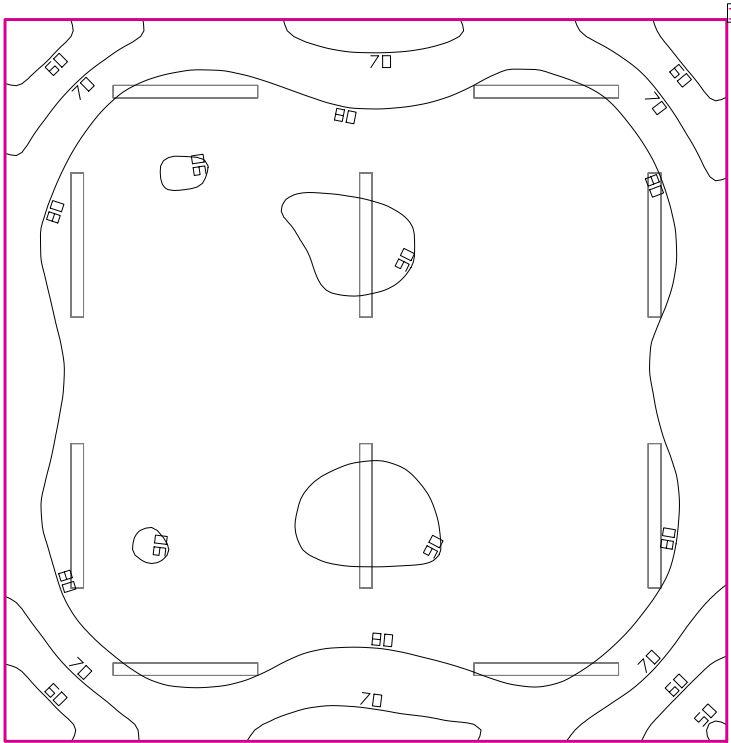


Room 1



Clearance height: 9.000 ft, Reflection factors: Ceiling 70.0%, Walls 50.0%, Floor 20.0%, Light loss factor: 0.90

Workplane

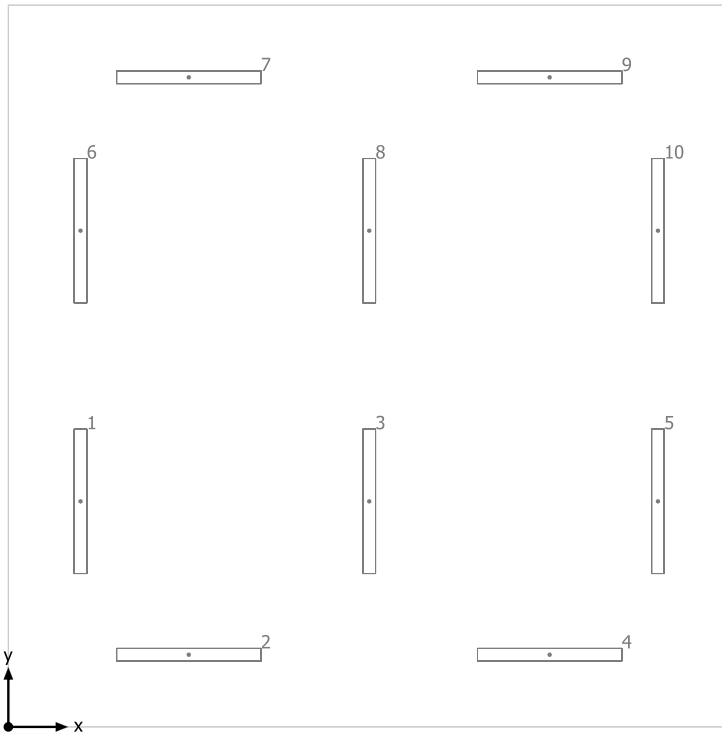
Surface	Result	Average (Target)	Min	Max	Mean/Min	Max/Min
1 Workplane 1	Perpendicular illuminance (adaptive) [fc] Height: 2.500 ft, Wall zone: 0.000 ft	81.30 (≥ 92.90)	49.24	91.83	1.65	1.87

#	Luminaire	Φ(Luminaire) [lm]	Power [W]	Luminous efficacy [lm/W]
10	4FT 2-LAMP STRIP LIGHT 22W-2640 LM / BULB X2 5000K 2 LED TUBES	5279	44.0	120.0
Total via all luminaires		52790	440.0	120.0

Lighting power density: 1.10 W/sq ft = 0.13 W/sq ft/10 fc (Floor area of room 400.01 sq ft)

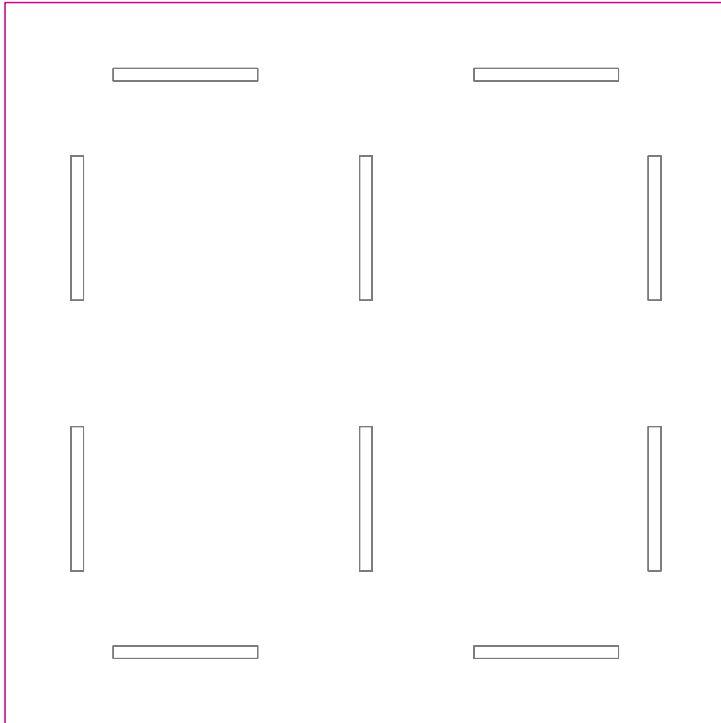
The energy consumption quantities refer to the lights planned for the room without taking into account light scenes and their dimming levels.
Consumption: 990 kWh/a of maximum 1350 kWh/a

Room 1



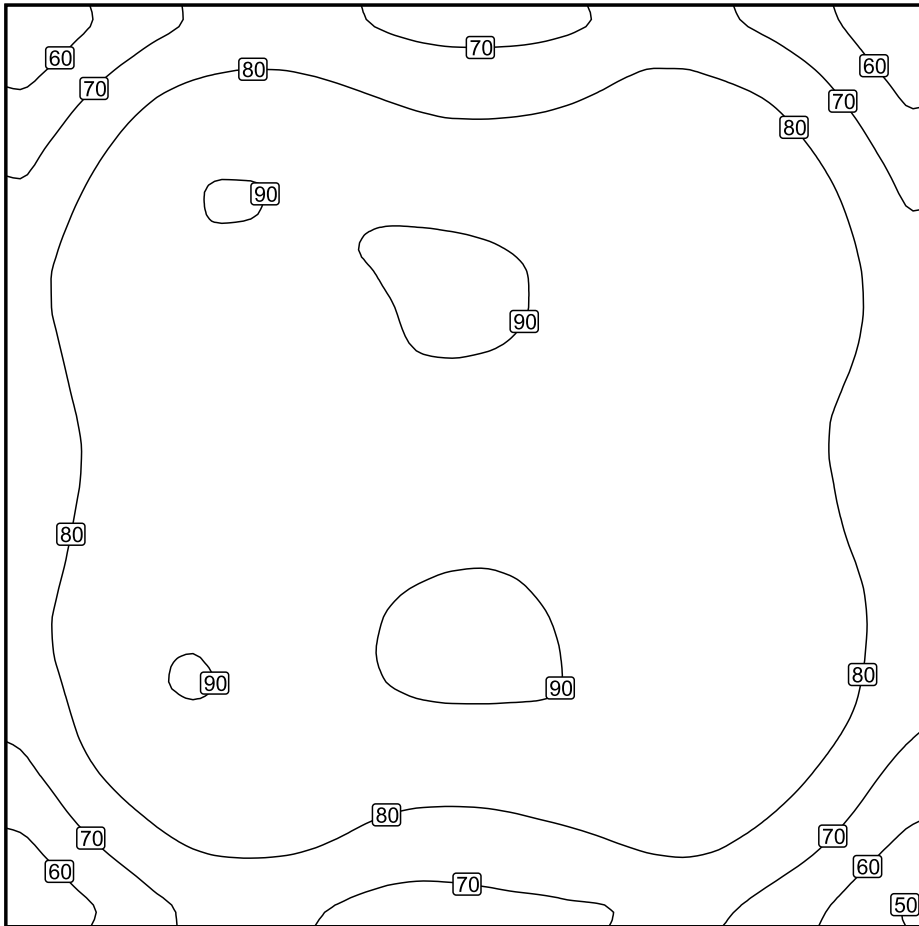
No.	X [ft]	Y [ft]	Mounting height [ft]
1	2.000	6.250	9.000
2	5.000	2.000	9.000
3	10.000	6.250	9.000
4	15.000	2.000	9.000
5	18.000	6.250	9.000
6	2.000	13.750	9.000
7	5.000	18.000	9.000
8	10.000	13.750	9.000
9	15.000	18.000	9.000
10	18.000	13.750	9.000

Workplane 1 / Perpendicular illuminance (adaptive)



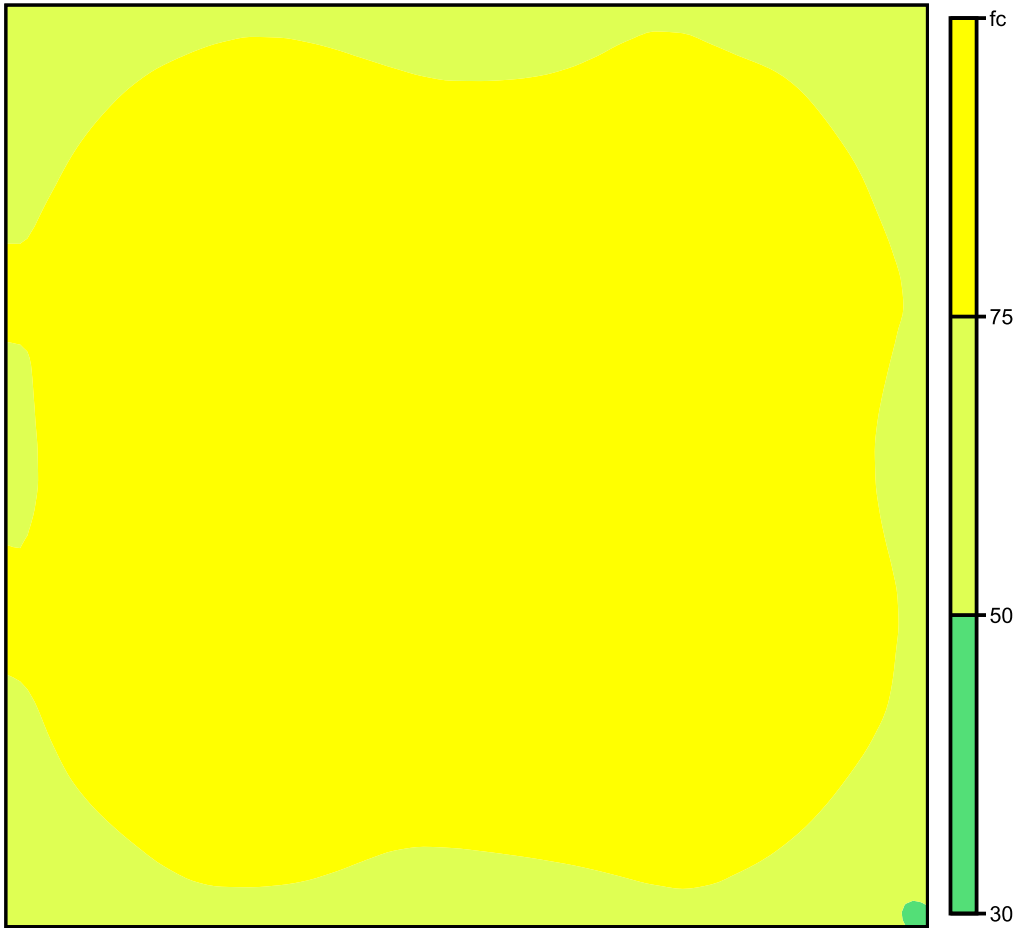
Workplane 1: Perpendicular illuminance (adaptive) (Surface)
Light scene: Light scene 1
Average: 81.30 fc (Target: ≥ 92.90 fc), Min: 49.24 fc, Max: 91.83 fc, Mean/Min: 1.65, Max/Min: 1.87
Height: 2.500 ft, Wall zone: 0.000 ft

Isolines [fc]



Scale: 1 : 50

False colors [fc]



Scale: 1 : 50

Value grid [fc]

+60	+73	+78	+75	+72	+73	+78	+73	+59
+73	+87	+89	+87	+84	+86	+87	+85	+71
+80	+89	+89	+90	+91	+89	+87	+87	+78
+79	+86	+85	+88	+90	+87	+85	+84	+77
+78	+84	+83	+85	+87	+85	+83	+82	+75
+79	+86	+86	+88	+90	+88	+84	+86	+77
+80	+90	+89	+90	+92	+90	+88	+88	+78
+73	+86	+88	+85	+84	+86	+88	+84	+71
+60	+73	+77	+73	+72	+73	+77	+72	+58

Scale: 1 : 50