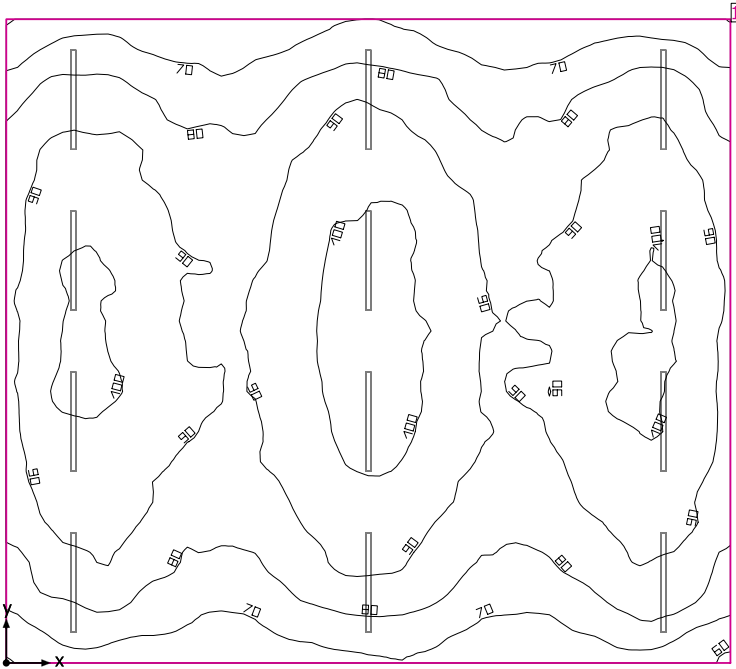


## Room 1



Clearance height: 10.000 ft, Reflection factors: Ceiling 70.0%, Walls 50.0%, Floor 20.0%, Light loss factor: 0.90

## Workplane

Surface	Result	Average (Target)	Min	Max	Mean/Min	Max/Min
1 Workplane (Room 1)	Perpendicular illuminance (adaptive) [fc] Height: 2.500 ft, Wall zone: 0.000 ft	87.2 (≥ 92.9)	59.5	105	1.47	1.76

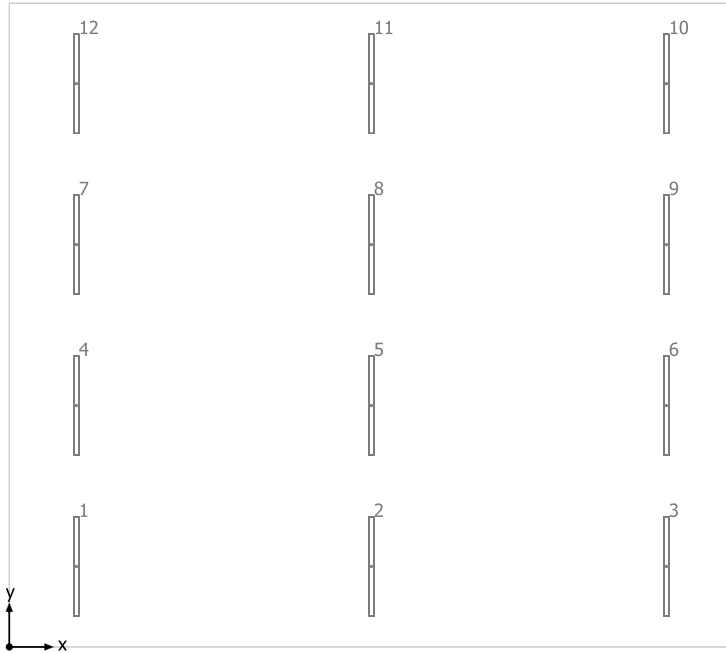
#	Luminaire	Φ(Luminaire) [lm]	Power [W]	Luminous efficacy [lm/W]
12	SIGNIFY DAY-BRITE - CFI - FSS470L840-UNV-DIM 4' FLUXSTREAM STRIP 2-LINEP 2.40L6 4000K BOARDS 75W DRIVER 10.5K RESISTOR	7273	57.9	125.6
Total via all luminaires		87276	694.8	125.6

Lighting power density: 1.07 W/sq ft = 0.11 W/sq ft/10 fc (Floor area of room 648.02 sq ft)

Consumption: 1550 kWh/a of maximum 2150 kWh/a

The energy consumption quantities do not take into account light scenes and their dimming levels.

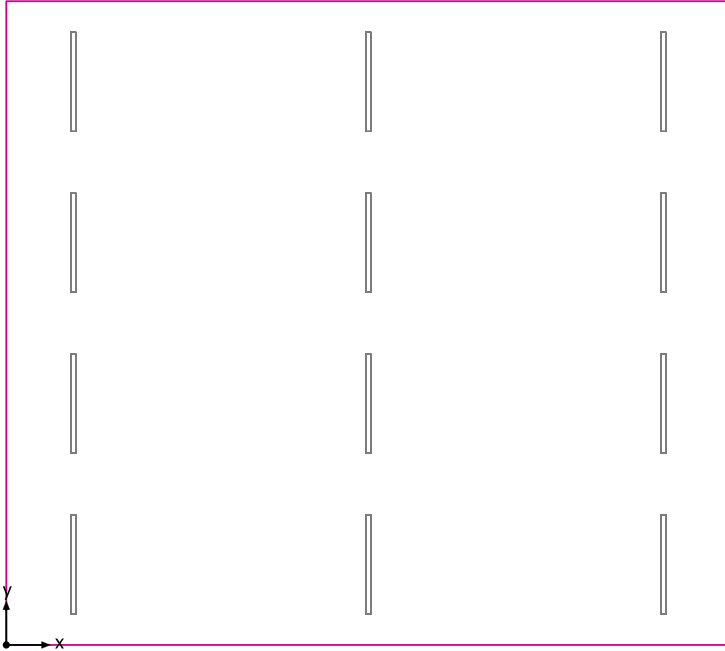
## Room 1



SIGNIFY DAY-BRITE - CFI FSS470L840-UNV-DIM 4' FLUXSTREAM STRIP 2-LINEP 2.40L6 4000K BOARDS 75W DRIVER 10.5K RESISTOR

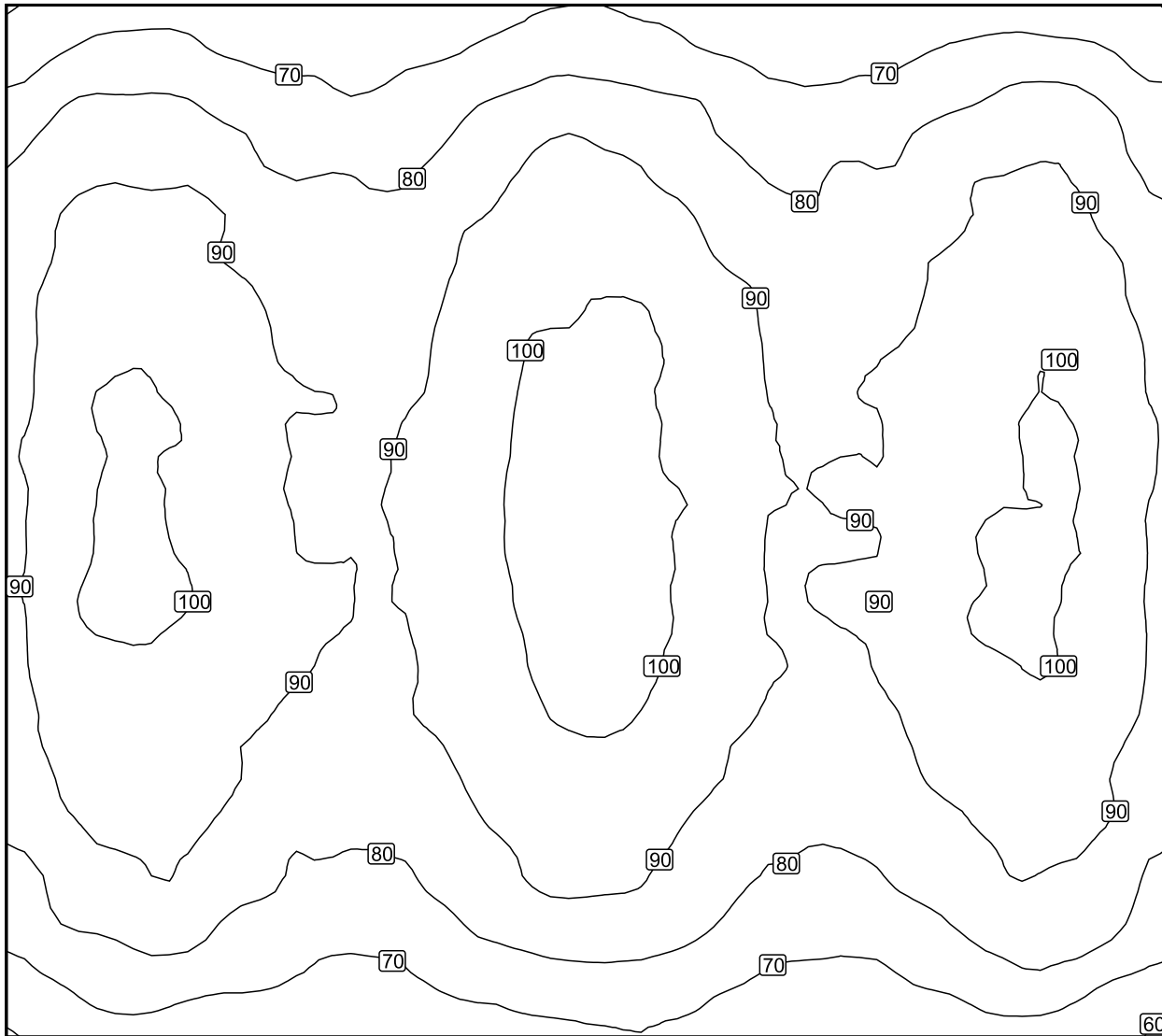
No.	X [ft]	Y [ft]	Mounting height [ft]	Light loss factor
1	2.500	3.000	10.000	0.90
2	13.500	3.000	10.000	0.90
3	24.500	3.000	10.000	0.90
4	2.500	9.000	10.000	0.90
5	13.500	9.000	10.000	0.90
6	24.500	9.000	10.000	0.90
7	2.500	15.000	10.000	0.90
8	13.500	15.000	10.000	0.90
9	24.500	15.000	10.000	0.90
10	24.500	21.000	10.000	0.90
11	13.500	21.000	10.000	0.90
12	2.500	21.000	10.000	0.90

## Workplane (Room 1) / Perpendicular illuminance (adaptive)



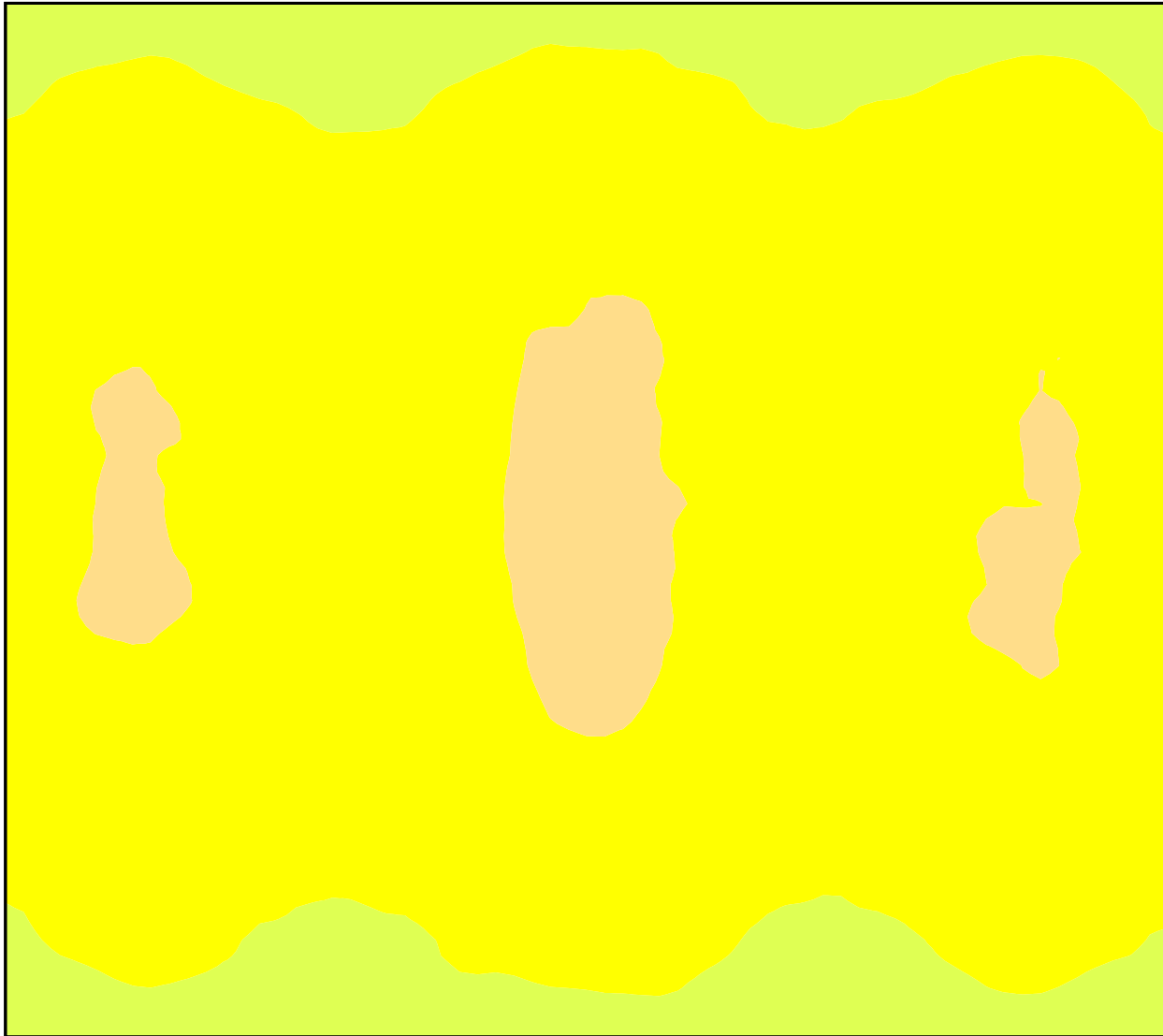
Workplane (Room 1): Perpendicular illuminance (adaptive) (Surface)  
Light scene: Light scene 1  
Average: 87.2 fc (Target:  $\geq 92.9$  fc), Min: 59.5 fc, Max: 105 fc, Mean/Min: 1.47, Max/Min: 1.76  
Height: 2.500 ft, Wall zone: 0.000 ft

## Isolines [fc]



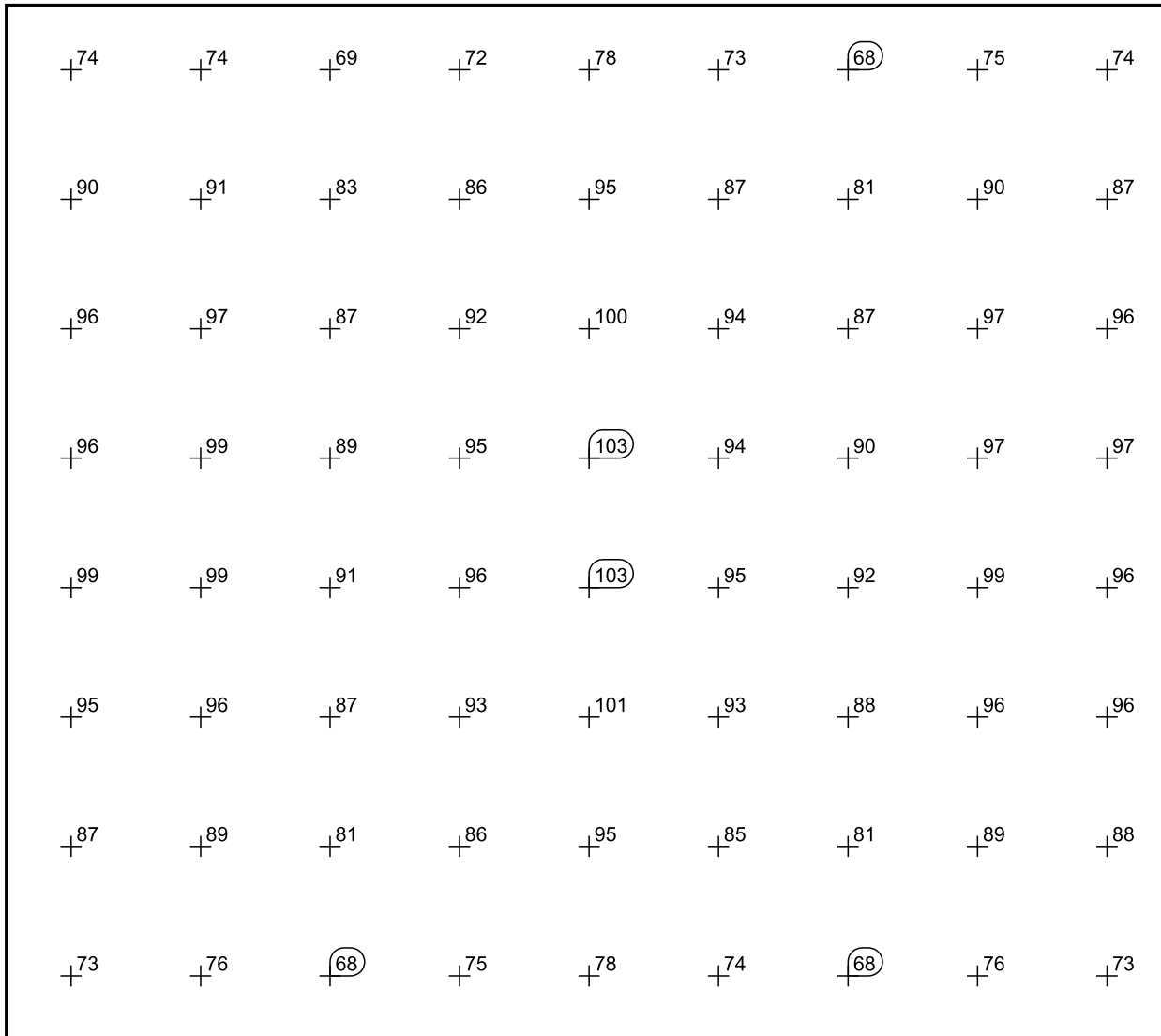
Scale: 1 : 50

## False colors [fc]



Scale: 1 : 50

## Value grid [fc]



Scale: 1 : 50