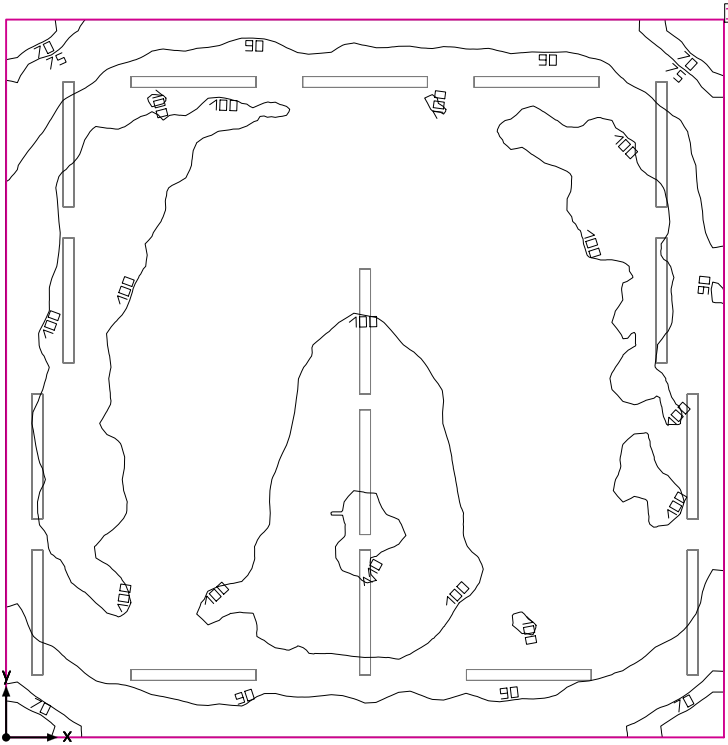


Room 1



Clearance height: 9.000 ft, Reflection factors: Ceiling 70.0%, Walls 50.0%, Floor 20.0%, Light loss factor: 0.90

Workplane

Surface	Result	Average (Target)	Min	Max	Mean/Min	Max/Min
1 Workplane (Room 1)	Perpendicular illuminance (adaptive) [fc] Height: 2.500 ft, Wall zone: 0.000 ft	95.3 (≥ 92.9)	60.3	111	1.58	1.84

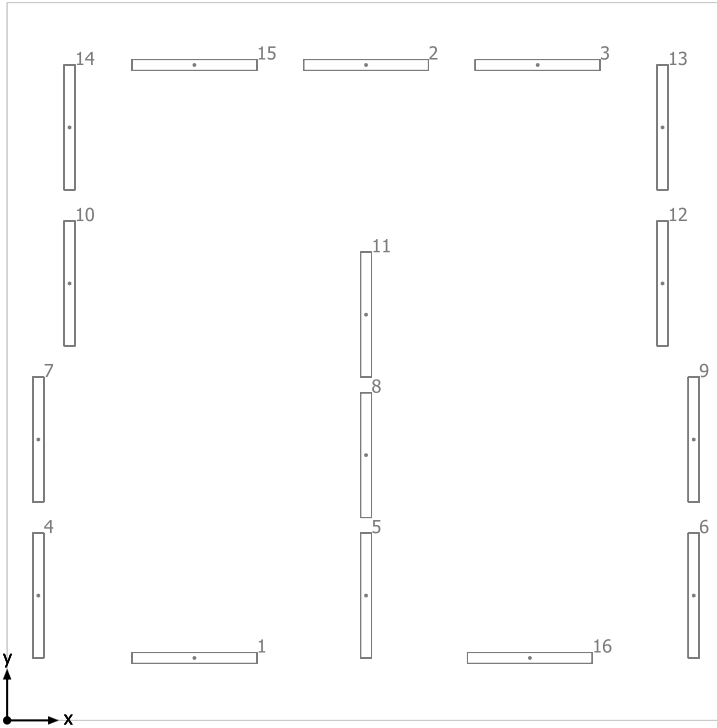
#	Luminaire	Φ(Luminaire) [lm]	Power [W]	Luminous efficacy [lm/W]
16	JAMES INDUSTRY GROUP CO LTD - ZY-T8-18W1200 BINT 5000K 2- LED TUBES	5039	36.0	140.0
Total via all luminaires		80624	576.0	140.0

Lighting power density: 1.09 W/sq ft = 0.11 W/sq ft/10 fc (Floor area of room 529.01 sq ft)

Consumption: 1300 kWh/a of maximum 1750 kWh/a

The energy consumption quantities do not take into account light scenes and their dimming levels.

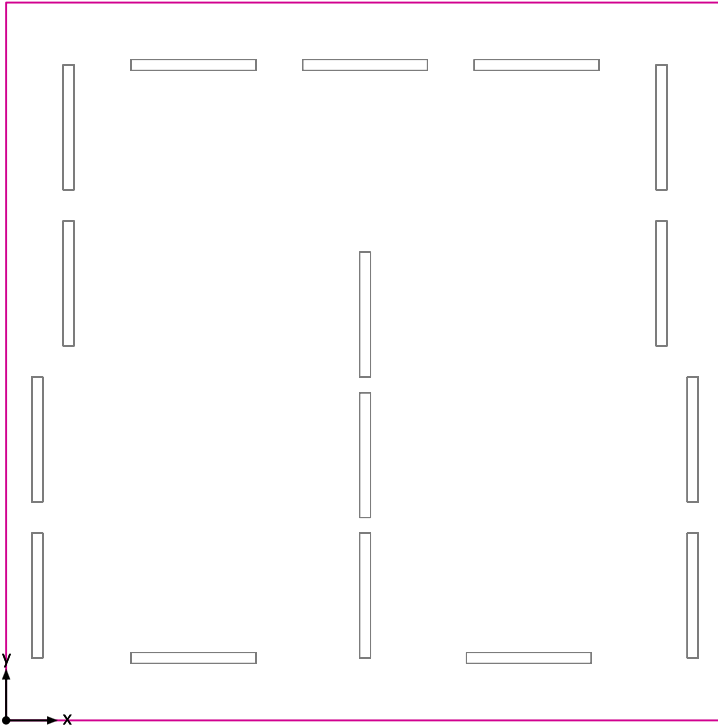
Room 1



JAMES INDUSTRY GROUP CO LTD ZY-T8-18W1200 BINT 5000K 2-LED TUBES

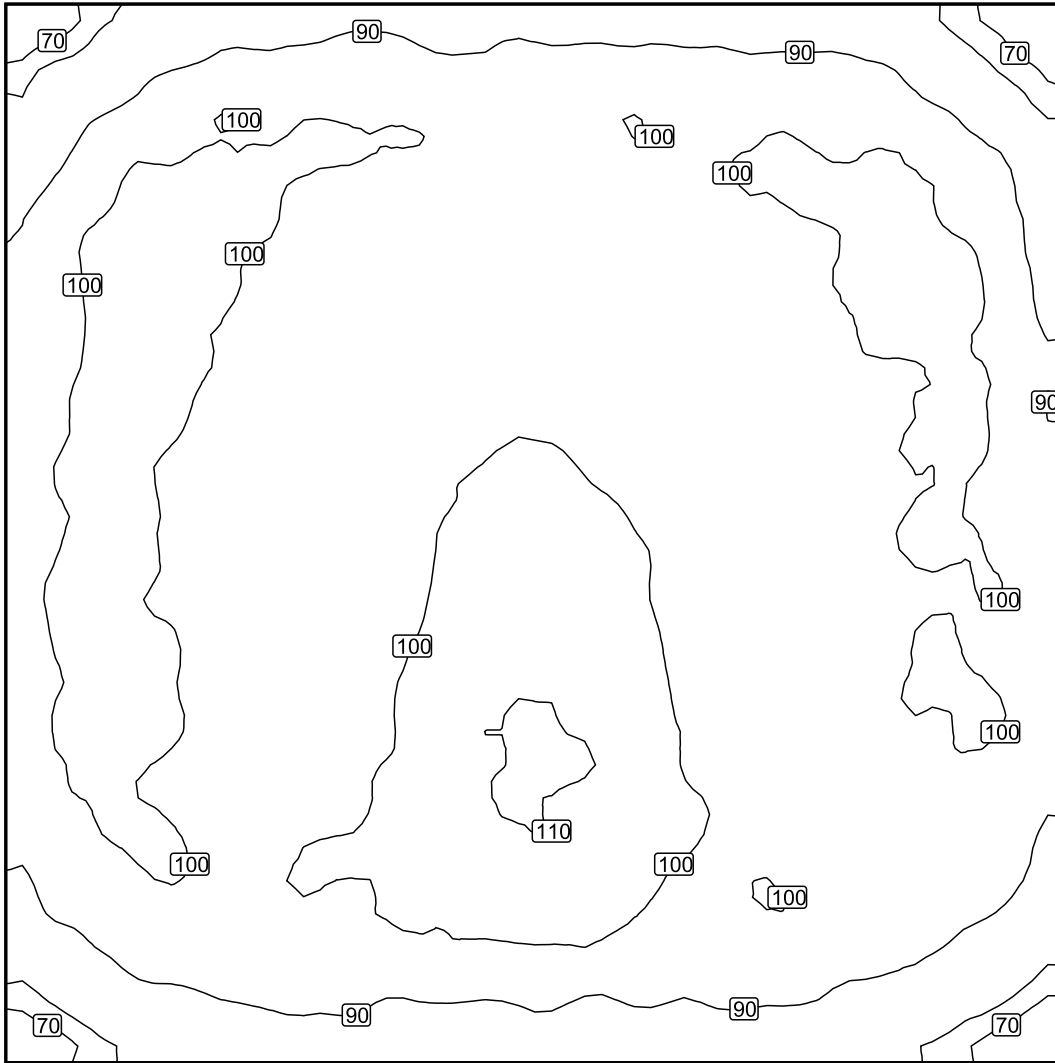
No.	X [ft]	Y [ft]	Mounting height [ft]	Light loss factor
1	6.000	2.000	9.000	0.90
2	11.500	21.000	9.000	0.90
3	17.000	21.000	9.000	0.90
4	1.000	4.000	9.000	0.90
5	11.500	4.000	9.000	0.90
6	22.000	4.000	9.000	0.90
7	1.000	9.000	9.000	0.90
8	11.500	8.500	9.000	0.90
9	22.000	9.000	9.000	0.90
10	2.000	14.000	9.000	0.90
11	11.500	13.000	9.000	0.90
12	21.000	14.000	9.000	0.90
13	21.000	19.000	9.000	0.90
14	2.000	19.000	9.000	0.90
15	6.000	21.000	9.000	0.90
16	16.750	2.000	9.000	0.90

Workplane (Room 1) / Perpendicular illuminance (adaptive)



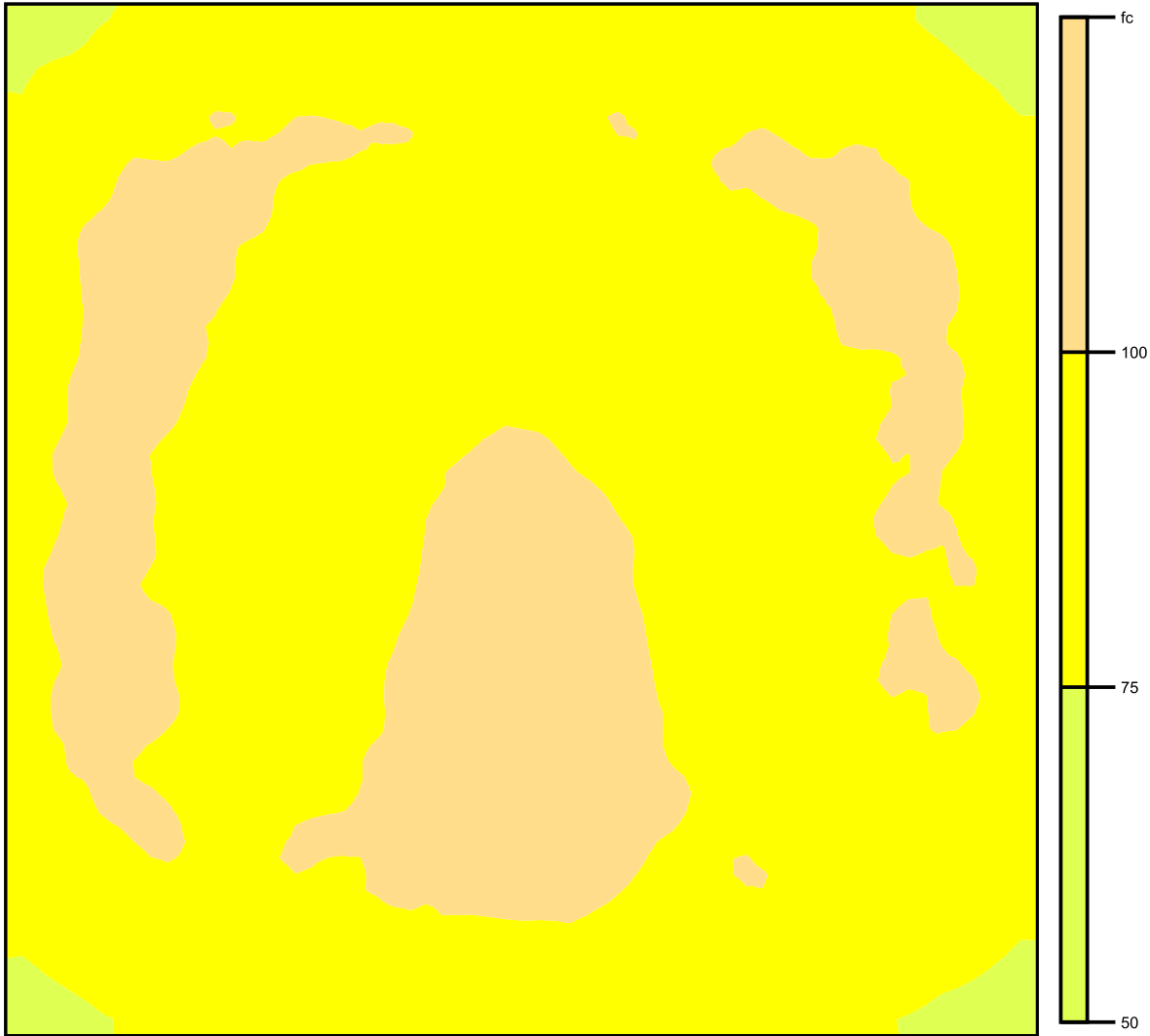
Workplane (Room 1): Perpendicular illuminance (adaptive) (Surface)
Light scene: Light scene 1
Average: 95.3 fc (Target: ≥ 92.9 fc), Min: 60.3 fc, Max: 111 fc, Mean/Min: 1.58, Max/Min: 1.84
Height: 2.500 ft, Wall zone: 0.000 ft

Isolines [fc]



Scale: 1 : 50

False colors [fc]



Scale: 1 : 50

Value grid [fc]

+76	+89	+92	+92	+94	+93	+91	+89	(73)
+92	+101	+100	+97	+97	+97	+101	+101	+91
+97	+102	+95	+93	+93	+93	+95	+101	+95
+99	+101	+92	+93	+99	+94	+92	+98	+97
+100	+97	+92	+98	+105	+99	+94	+99	+98
+101	+100	+93	+101	+109	+101	+93	+97	+97
+100	+98	+96	+103	(110)	+103	+94	+98	+97
+96	+99	+100	+102	+105	+101	+100	+97	+92
+77	+86	+92	+90	+92	+91	+90	+85	+74

Scale: 1 : 50