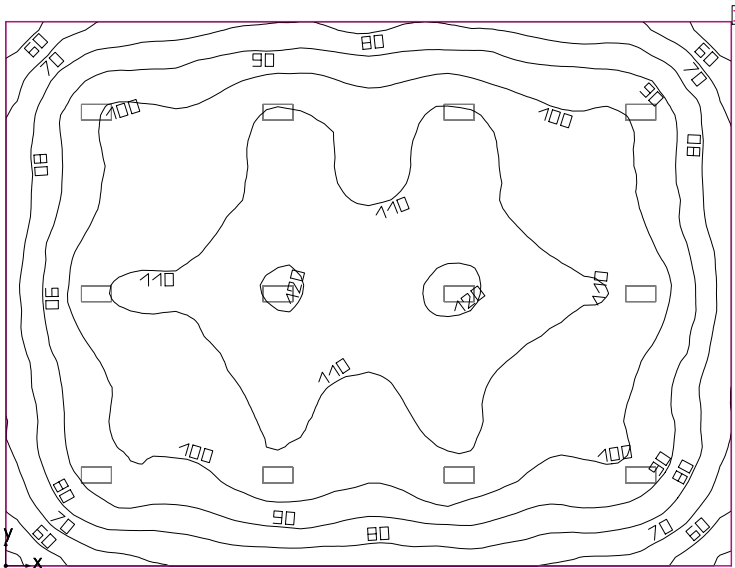


Room 1



Clearance height: 14.500 ft, Reflection factors: Ceiling 70.0%, Walls 50.0%, Floor 20.0%, Light loss factor: 0.90

Workplane

Surface	Result	Average (Target)	Min	Max	Mean/Min	Max/Min
1 Workplane (Room 1)	Perpendicular illuminance (adaptive) [fc] Height: 2.500 ft, Wall zone: 0.000 ft	97.5 (≥ 92.9)	48.1	122	2.03	2.52

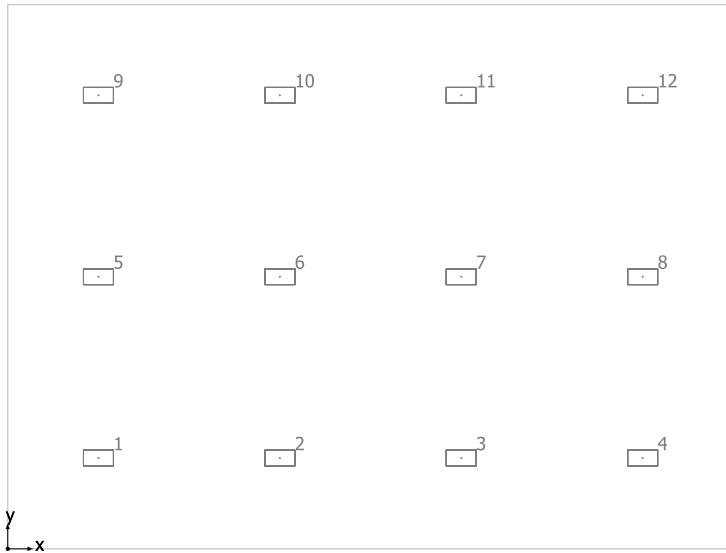
#	Luminaire	Φ(Luminaire) [lm]	Power [W]	Luminous efficacy [lm/W]
12	JAMES INDUSTRY GROUP CO LTD - ZY-H2-110W XDZ(5000K)	18500	132.0	140.2
Total via all luminaires		222000	1584.0	140.2

Lighting power density: 0.92 W/sq ft = 0.09 W/sq ft/10 fc (Floor area of room 1728.04 sq ft)

Consumption: 3550 kWh/a of maximum 5650 kWh/a

The energy consumption quantities do not take into account light scenes and their dimming levels.

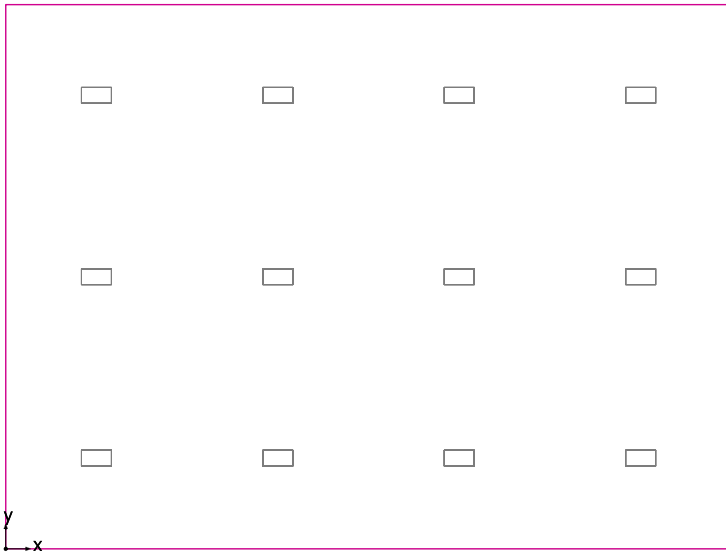
Room 1



JAMES INDUSTRY GROUP CO LTD ZY-H2-110W XDZ(5000K)

No.	X [ft]	Y [ft]	Mounting height [ft]	Light loss factor
1	6.000	6.000	14.500	0.90
2	18.000	6.000	14.500	0.90
3	30.000	6.000	14.500	0.90
4	42.000	6.000	14.500	0.90
5	6.000	18.000	14.500	0.90
6	18.000	18.000	14.500	0.90
7	30.000	18.000	14.500	0.90
8	42.000	18.000	14.500	0.90
9	6.000	30.000	14.500	0.90
10	18.000	30.000	14.500	0.90
11	30.000	30.000	14.500	0.90
12	42.000	30.000	14.500	0.90

Workplane (Room 1) / Perpendicular illuminance (adaptive)



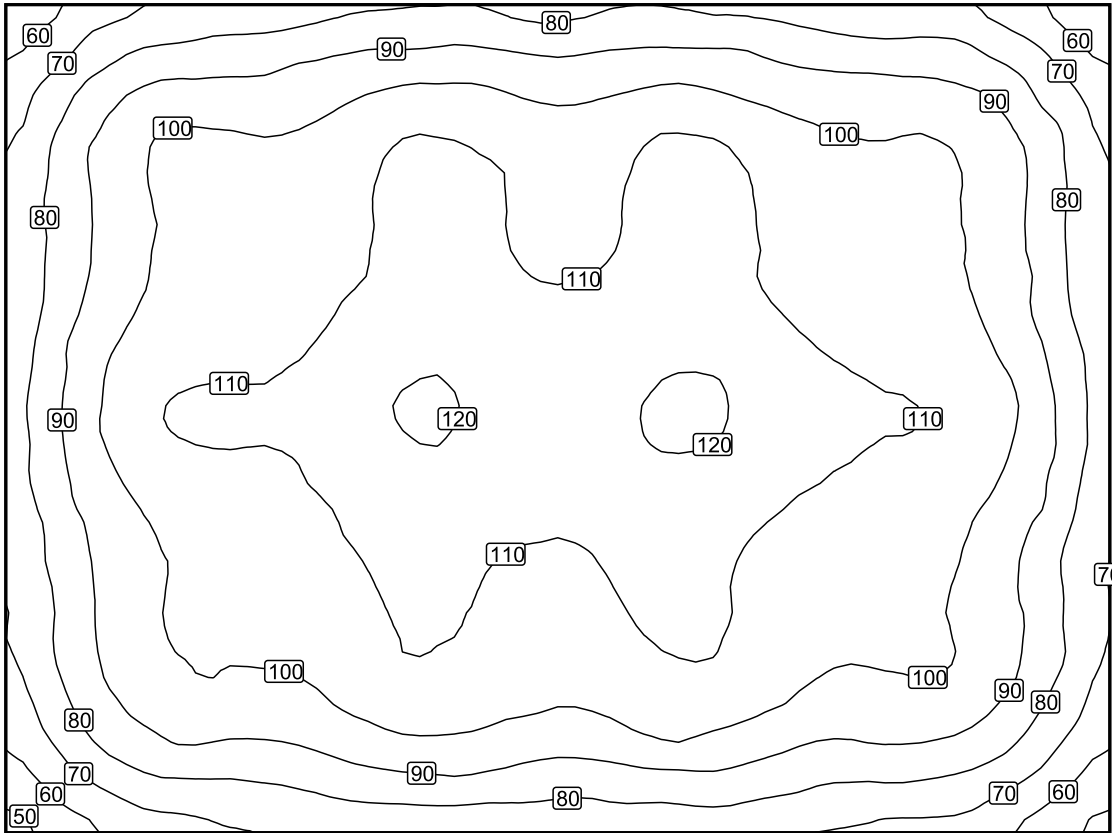
Workplane (Room 1): Perpendicular illuminance (adaptive) (Surface)

Light scene: Light scene 1

Average: 97.5 fc (Target: ≥ 92.9 fc), Min: 48.1 fc, Max: 122 fc, Mean/Min: 2.03, Max/Min: 2.52

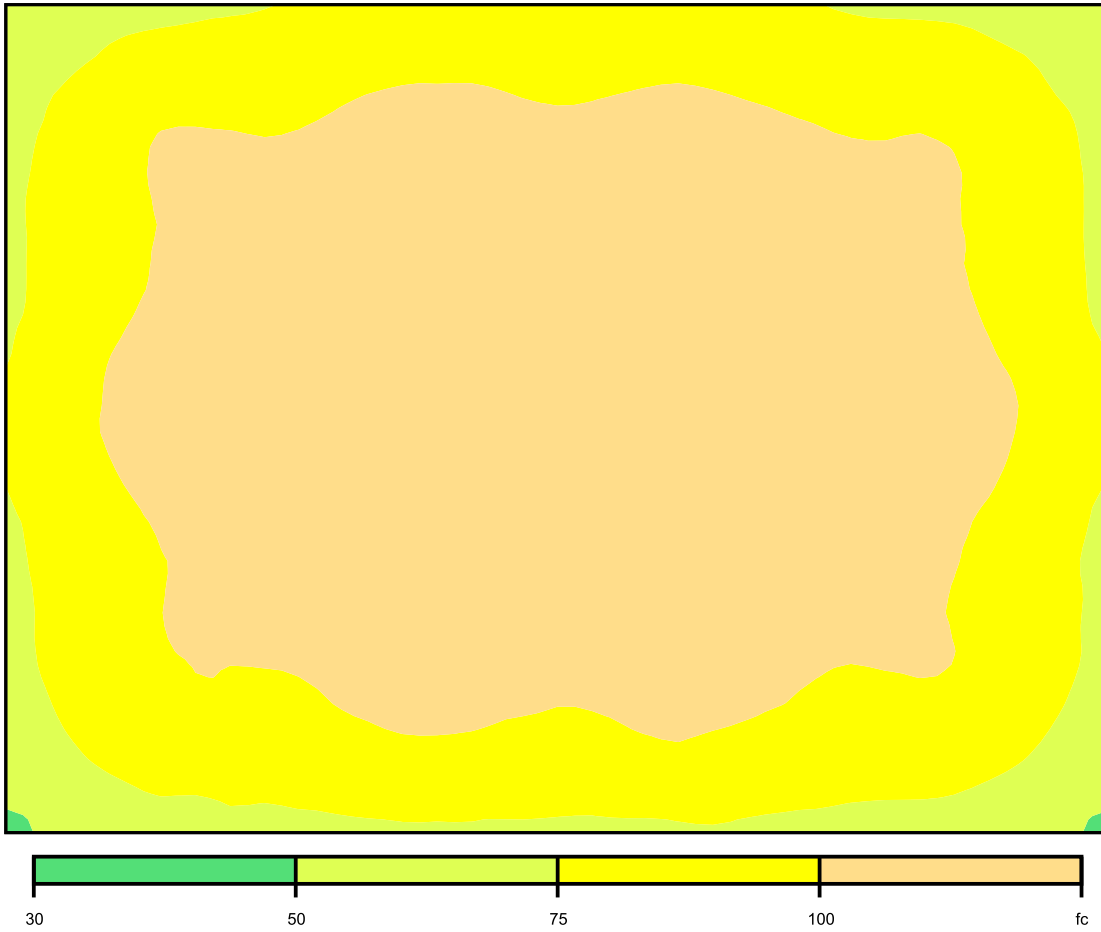
Height: 2.500 ft, Wall zone: 0.000 ft

Isolines [fc]



Scale: 1 : 100

False colors [fc]



Scale: 1 : 100

Value grid [fc]

+67	+83	+86	+91	+93	+90	+92	+90	+86	+84	+67
+82	+101	+102	+107	+112	+107	+112	+108	+102	+100	+81
+83	+101	+104	+109	+112	+109	+112	+110	+104	+101	+82
+87	+107	+109	+115	+119	+115	+119	+116	+110	+107	+87
+87	+106	+109	+115	+118	+113	+118	+114	+109	+105	+87
+82	+99	+103	+109	+111	+108	+112	+108	+104	+100	+80
+79	+97	+99	+105	+108	+104	+108	+105	+99	+98	+79
+64	+79	+80	+86	+89	+84	+86	+86	+80	+78	+63

Scale: 1 : 100