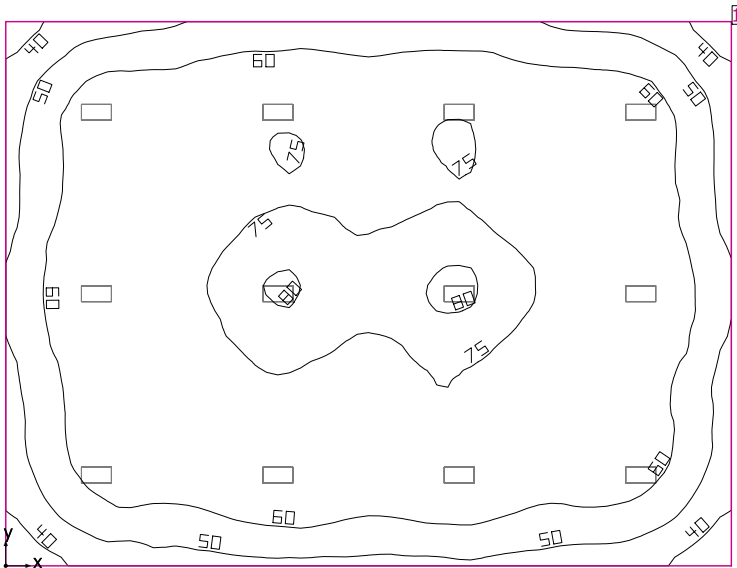


Room 1



Clearance height: 14.500 ft, Reflection factors: Ceiling 70.0%, Walls 50.0%, Floor 20.0%, Light loss factor: 0.90

Workplane

| Surface | Result | Average (Target) | Min | Max | Mean/Min | Max/Min |
|----------------------|--|------------------|------|------|----------|---------|
| 1 Workplane (Room 1) | Perpendicular illuminance (adaptive) [fc] Height: 2.500 ft, Wall zone: 0.000 ft | 64.8 (≥ 92.9) | 32.0 | 80.8 | 2.03 | 2.52 |

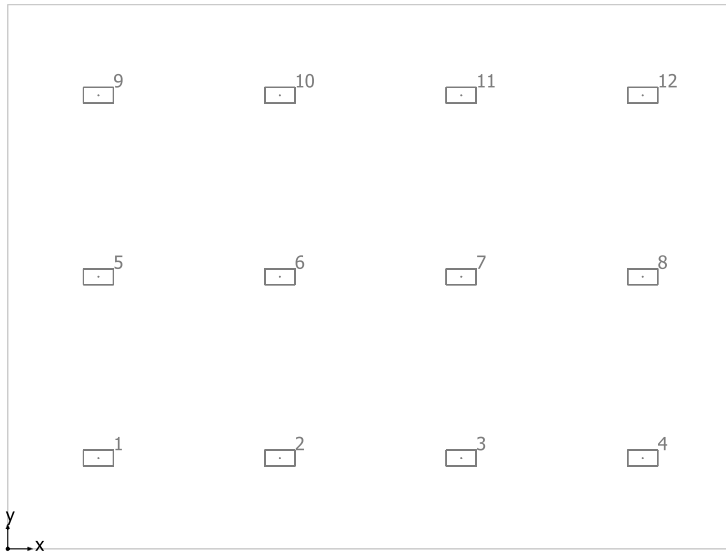
| # | Luminaire | Φ(Luminaire) [lm] | Power [W] | Luminous efficacy [lm/W] |
|--------------------------|---|-------------------|-----------|--------------------------|
| 12 | JAMES INDUSTRY GROUP CO LTD - ZY-H2-110W XDZ(5000K) | 12300 | 87.0 | 141.4 |
| Total via all luminaires | | 147600 | 1044.0 | 141.4 |

Lighting power density: 0.60 W/sq ft = 0.09 W/sq ft/10 fc (Floor area of room 1728.04 sq ft)

Consumption: 2350 kWh/a of maximum 5650 kWh/a

The energy consumption quantities do not take into account light scenes and their dimming levels.

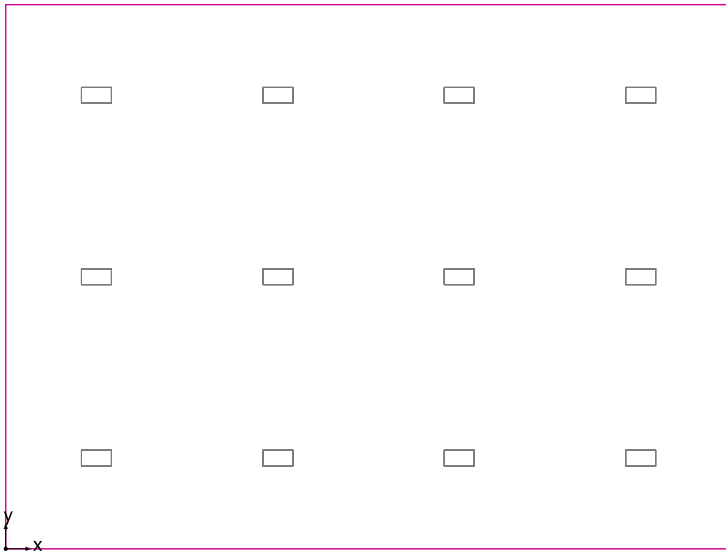
Room 1



JAMES INDUSTRY GROUP CO LTD ZY-H2-110W XDZ(5000K)

| No. | X [ft] | Y [ft] | Mounting height [ft] | Light loss factor |
|-----|--------|--------|----------------------|-------------------|
| 1 | 6.000 | 6.000 | 14.500 | 0.90 |
| 2 | 18.000 | 6.000 | 14.500 | 0.90 |
| 3 | 30.000 | 6.000 | 14.500 | 0.90 |
| 4 | 42.000 | 6.000 | 14.500 | 0.90 |
| 5 | 6.000 | 18.000 | 14.500 | 0.90 |
| 6 | 18.000 | 18.000 | 14.500 | 0.90 |
| 7 | 30.000 | 18.000 | 14.500 | 0.90 |
| 8 | 42.000 | 18.000 | 14.500 | 0.90 |
| 9 | 6.000 | 30.000 | 14.500 | 0.90 |
| 10 | 18.000 | 30.000 | 14.500 | 0.90 |
| 11 | 30.000 | 30.000 | 14.500 | 0.90 |
| 12 | 42.000 | 30.000 | 14.500 | 0.90 |

Workplane (Room 1) / Perpendicular illuminance (adaptive)



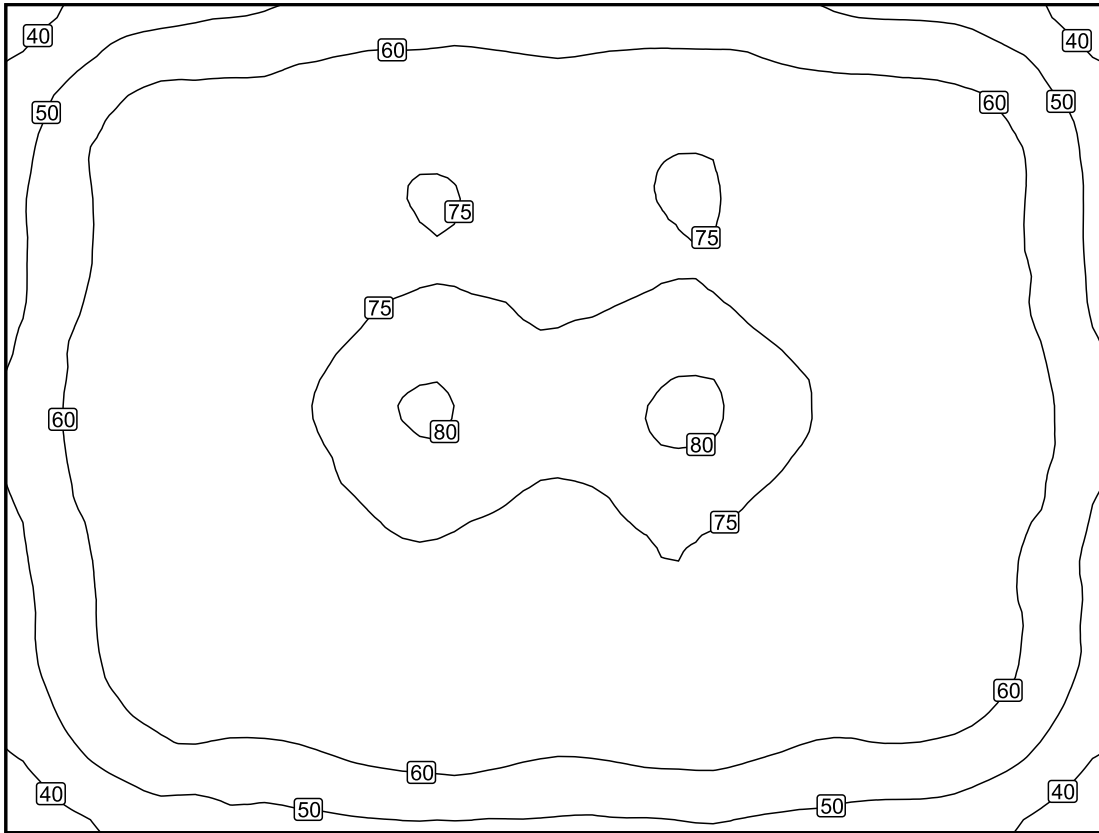
Workplane (Room 1): Perpendicular illuminance (adaptive) (Surface)

Light scene: Light scene 1

Average: 64.8 fc (Target: ≥ 92.9 fc), Min: 32.0 fc, Max: 80.8 fc, Mean/Min: 2.03, Max/Min: 2.52

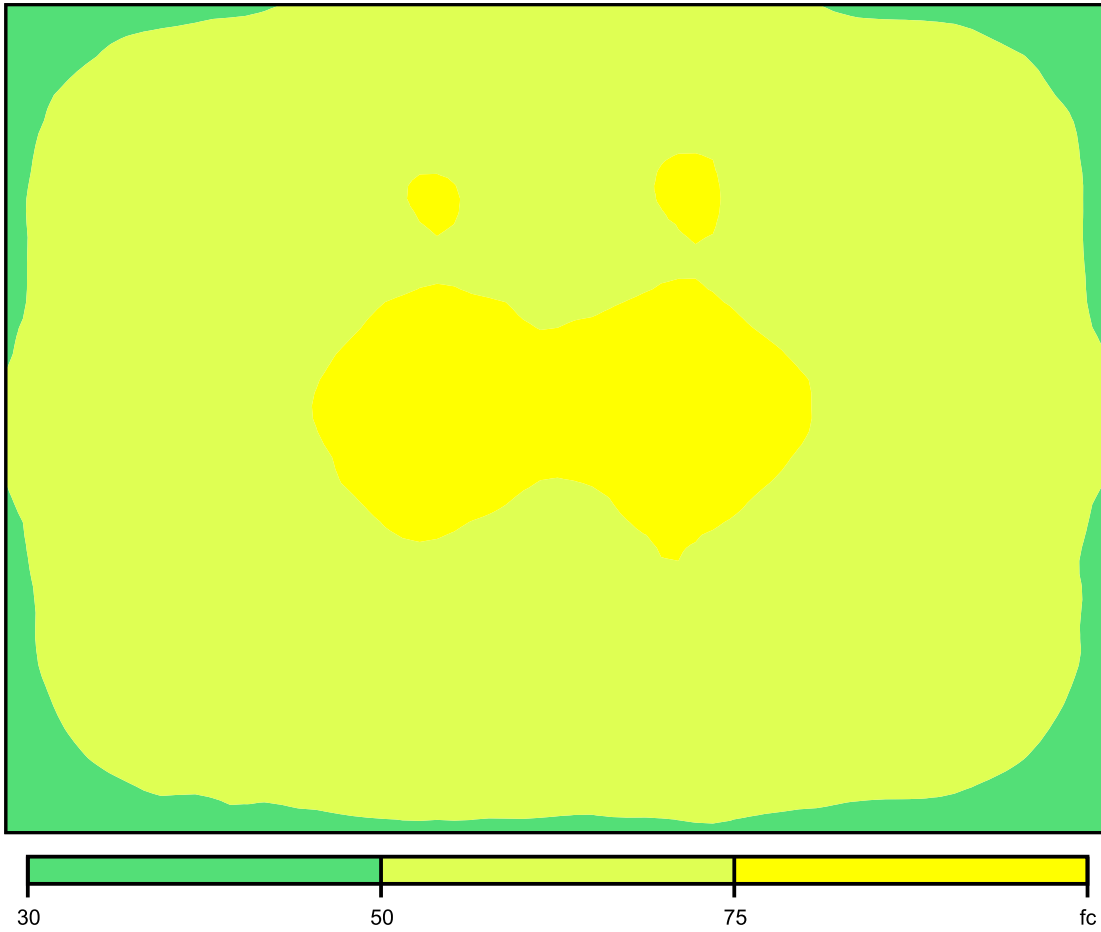
Height: 2.500 ft, Wall zone: 0.000 ft

Isolines [fc]



Scale: 1 : 100

False colors [fc]



Scale: 1 : 100

Value grid [fc]

| | | | | | | | | | | |
|-----|-----|-----|-----|------|-----|------|-----|-----|-----|------|
| +45 | +55 | +57 | +61 | +62 | +60 | +61 | +60 | +57 | +56 | +45 |
| +55 | +67 | +68 | +71 | +74 | +71 | +75 | +72 | +68 | +66 | +54 |
| +55 | +67 | +69 | +73 | +75 | +72 | +75 | +73 | +69 | +67 | +54 |
| +58 | +71 | +73 | +77 | (79) | +76 | (79) | +77 | +73 | +71 | +58 |
| +58 | +70 | +72 | +76 | +78 | +75 | (79) | +76 | +73 | +70 | +58 |
| +54 | +66 | +68 | +73 | +74 | +72 | +75 | +72 | +69 | +66 | +53 |
| +52 | +65 | +66 | +70 | +72 | +69 | +72 | +70 | +66 | +65 | +53 |
| +43 | +52 | +53 | +57 | +59 | +56 | +57 | +57 | +53 | +52 | (42) |

Scale: 1 : 100