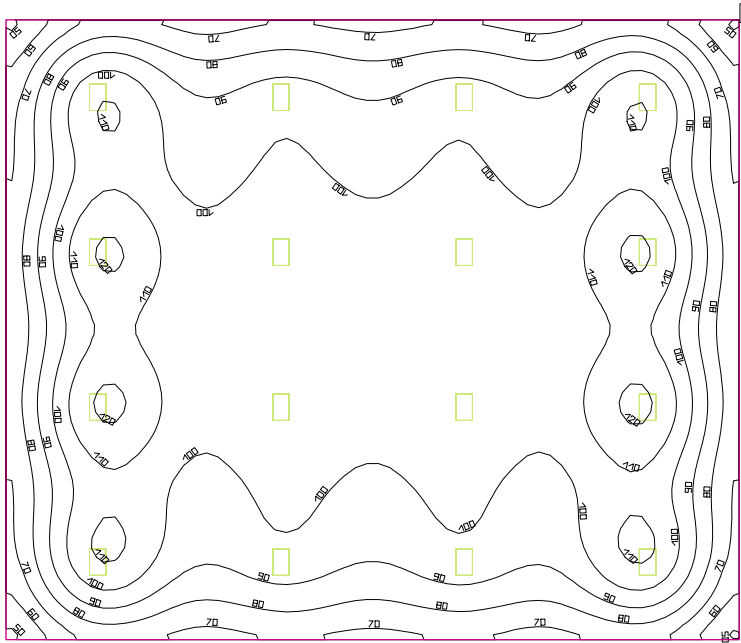


Room 1



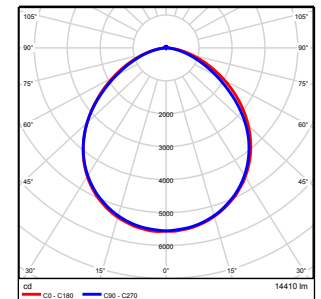
Height of room: 14.600 ft, Reflection factors: Ceiling 70.0%, Walls 50.0%, Floor 20.0%, Light loss factor: 0.90

Workplane

Surface	Result	Mean (target)	Min	Max	Mean/Min	Max/Min
1 Workplane 1	Perpendicular illuminance [fc] Height of working plane: 2.500 ft, Wall zone: 0.000 ft	96.19 (92.90)	48.37	122	1.99	2.52

No.	Quantity	
1	16	Lithonia Lighting IBH 15000LM SD080 MD OZ10 30K 80CRI IBH 15,000Lumens Semi-Diffuse Acylic Lens, Medium Distribution,OZ10 Driver, 3000K, 80CRI Absolute photometry Luminaire Luminous Flux: 14410 lm Power: 110.0 W Light yield: 131.0 lm/W Colour temperature: 5000 K Color rendering index: 86

See our luminaire catalog for an image of the luminaire.



Total lamp luminous flux: 230560 lm, Total luminaire luminous flux: 230560 lm, Total Load: 1760.0 W, Light yield: 131.0 lm/W

Lighting power density: 0.89 W/sq ft = 0.09 W/sq ft/10 fc (Ground area 1988.55 sq ft)