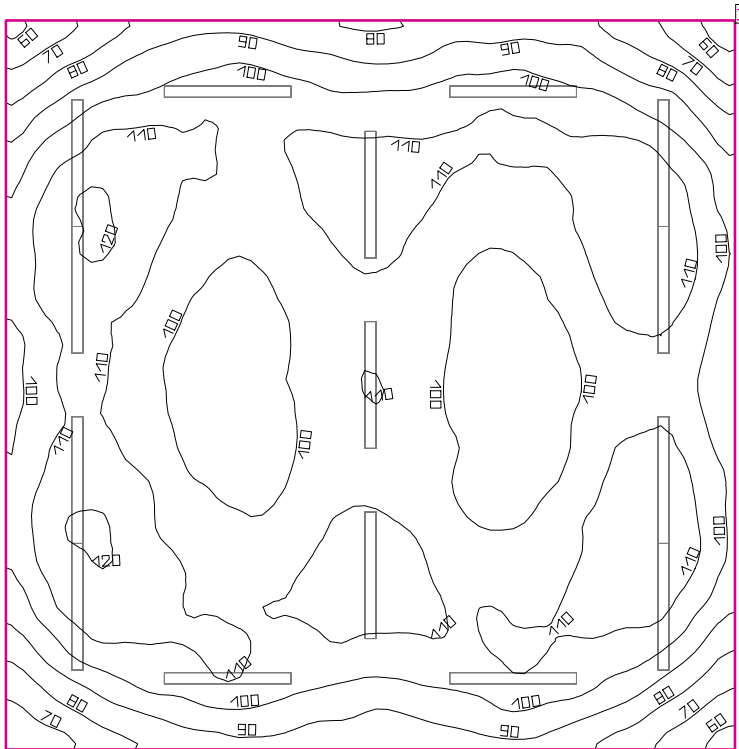


Room 1



Clearance height: 8.200 ft, Reflection factors: Ceiling 70.0%, Walls 50.0%, Floor 20.0%, Light loss factor: 0.90

Workplane

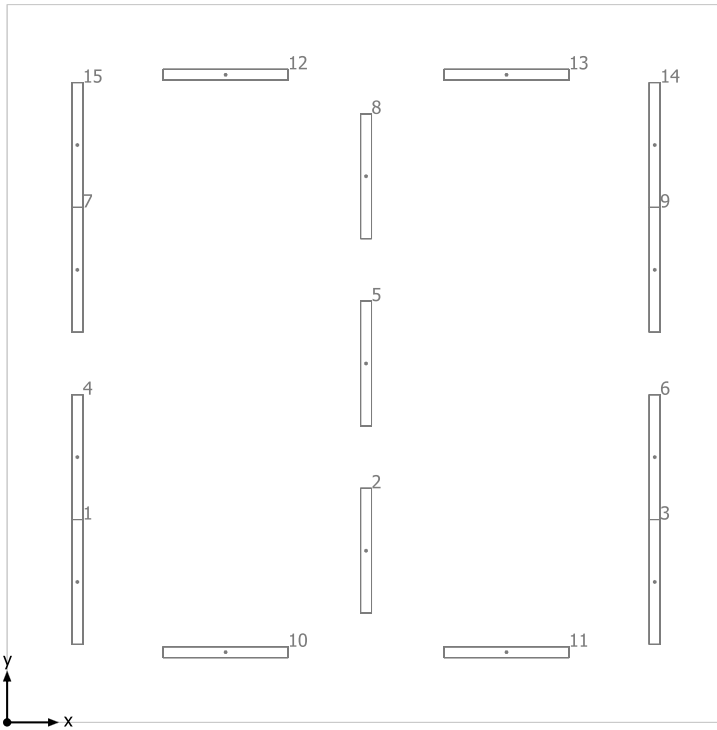
Surface	Result	Average (Target)	Min	Max	Mean/Min	Max/Min
1 Workplane 1	Perpendicular illuminance (adaptive) [fc] Height: 2.500 ft, Wall zone: 0.000 ft	103 (≥ 92.90)	54.81	122	1.87	2.23

#	Luminaire	Φ(Luminaire) [lm]	Power [W]	Luminous efficacy [lm/W]
15	JAMES INDUSTRY GROUP CO LTD - ZY-T8-18W1200 BINT 5000K 2- LED TUBES	5327	36.0	148.0
Total via all luminaires		79905	540.0	148.0

Lighting power density: 1.02 W/sq ft = 0.09 W/sq ft/10 fc (Floor area of room 529.01 sq ft)

The energy consumption quantities refer to the lights planned for the room without taking into account light scenes and their dimming levels.
Consumption: 1200 kWh/a of maximum 1750 kWh/a

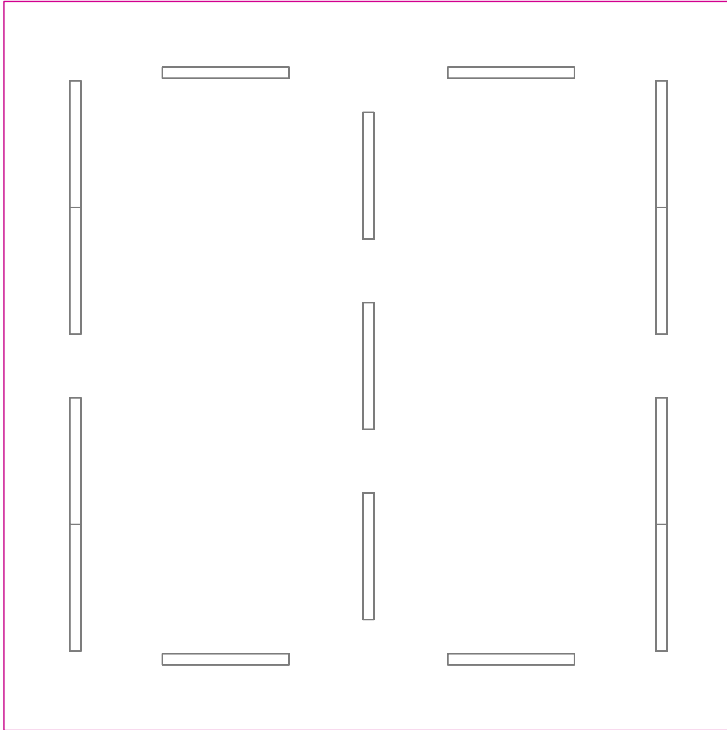
Room 1



JAMES INDUSTRY GROUP CO LTD ZY-T8-18W1200 BINT 5000K 2-LED TUBES

No.	X [ft]	Y [ft]	Mounting height [ft]
1	2.250	4.500	8.200
2	11.500	5.500	8.200
3	20.750	4.500	8.200
4	2.250	8.500	8.200
5	11.500	11.500	8.200
6	20.750	8.500	8.200
7	2.250	14.500	8.200
8	11.500	17.500	8.200
9	20.750	14.500	8.200
10	7.000	2.250	8.200
11	16.000	2.250	8.200
12	7.000	20.750	8.200
13	16.000	20.750	8.200
14	20.750	18.500	8.200
15	2.250	18.500	8.200

Workplane 1 / Perpendicular illuminance (adaptive)



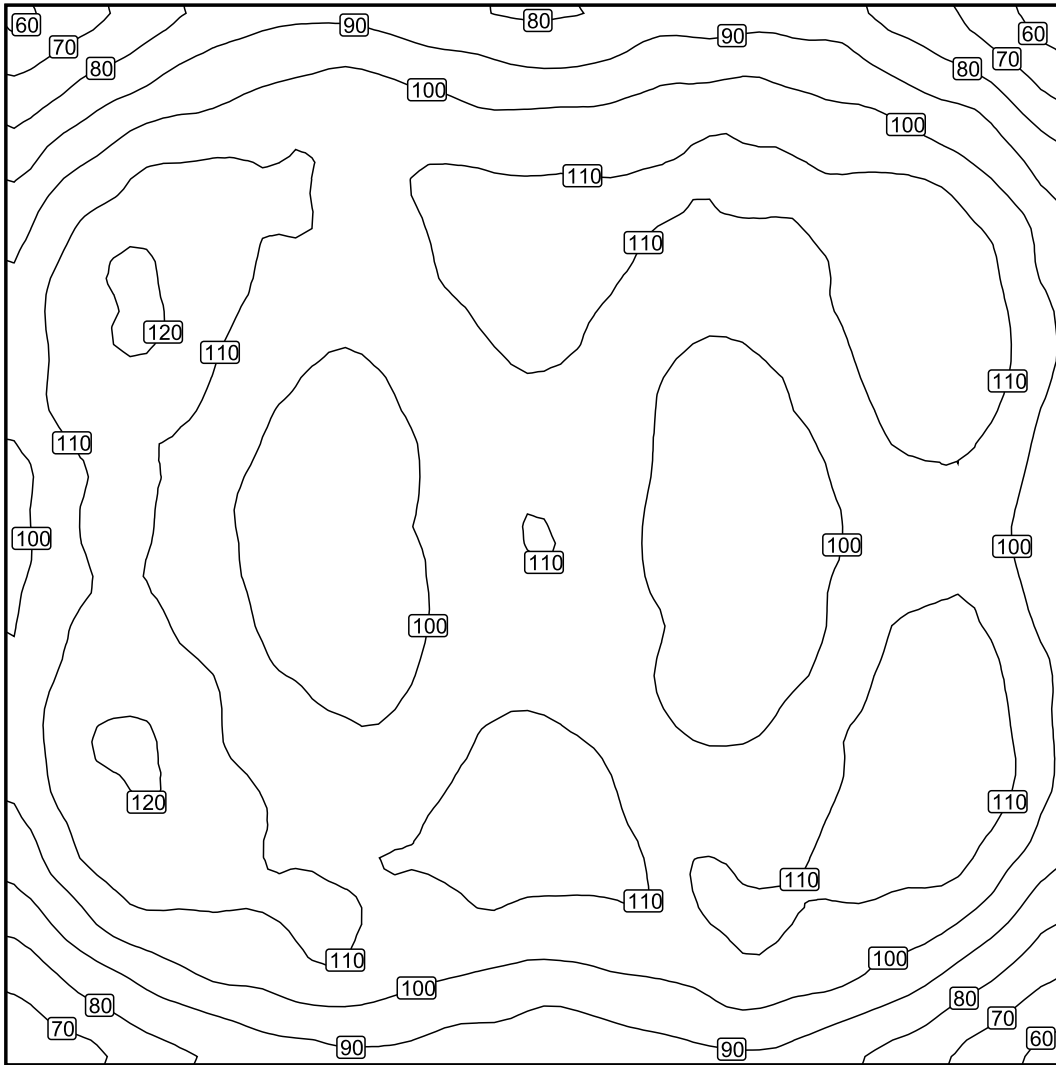
Workplane 1: Perpendicular illuminance (adaptive) (Surface)

Light scene: Light scene 1

Average: 103 fc (Target: ≥ 92.90 fc), Min: 54.81 fc, Max: 122 fc, Mean/Min: 1.87, Max/Min: 2.23

Height: 2.500 ft, Wall zone: 0.000 ft

Isolines [fc]



Scale: 1 : 50

False colors [fc]



Scale: 1 : 50

Value grid [fc]

+76	+92	+98	+95	+89	+96	+98	+89	(74)
+103	+113	+110	+110	+110	+111	+112	+111	+100
+115	(117)	+104	+107	+113	+106	+106	+116	+110
+112	+110	+98	+101	+109	+100	+98	+111	+108
+108	+107	+95	+100	+110	+98	+95	+106	+101
+110	+110	+97	+99	+108	+100	+96	+111	+109
+114	(117)	+104	+106	+114	+106	+103	+116	+112
+103	+113	+112	+109	+111	+110	+110	+112	+99
+77	+91	+99	+97	+91	+96	+100	+91	(74)

Scale: 1 : 50