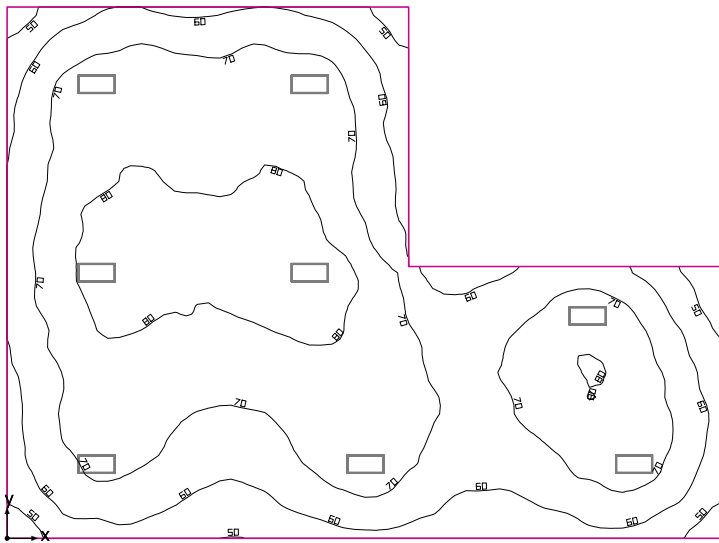


Room 1



Clearance height: 14.000 ft, Reflection factors: Ceiling 70.0%, Walls 50.0%, Floor 20.0%, Light loss factor: 0.90

Workplane

Surface	Result	Average (Target)	Min	Max	Mean/Min	Max/Min
1 Workplane (Room 1)	Perpendicular illuminance (adaptive) [fc] Height: 2.500 ft, Wall zone: 0.000 ft	69.9 (≥ 69.7)	42.3	85.8	1.65	2.03

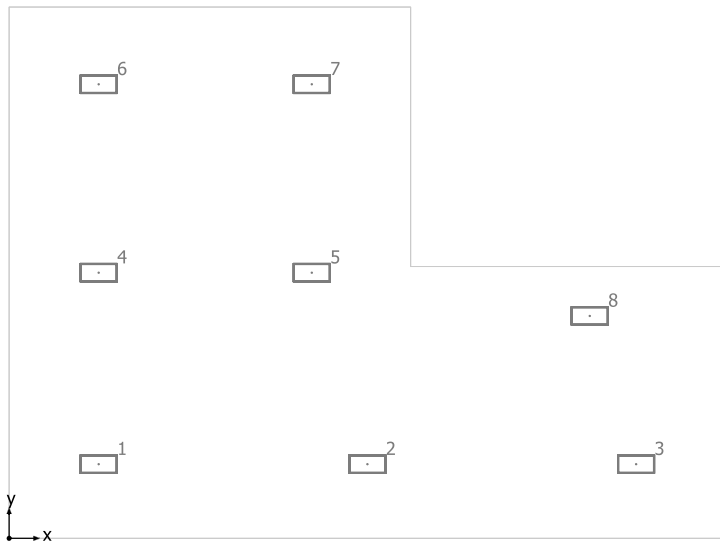
# Luminaire	Φ(Luminaire) [lm]	Power [W]	Luminous efficacy [lm/W]
8 DECO LIGHTING, LLC - DHL-LP-2-90-40-UNV-F 2' 90W 4000K Low-Profile High Bay Luminaire Frosted Lens	11607	88.4	131.3
Total via all luminaires	92856	707.2	131.3

Lighting power density: 0.81 W/sq ft = 0.11 W/sq ft/10 fc (Floor area of room 870.51 sq ft)

Consumption: 1600 kWh/a of maximum 2850 kWh/a

The energy consumption quantities do not take into account light scenes and their dimming levels.

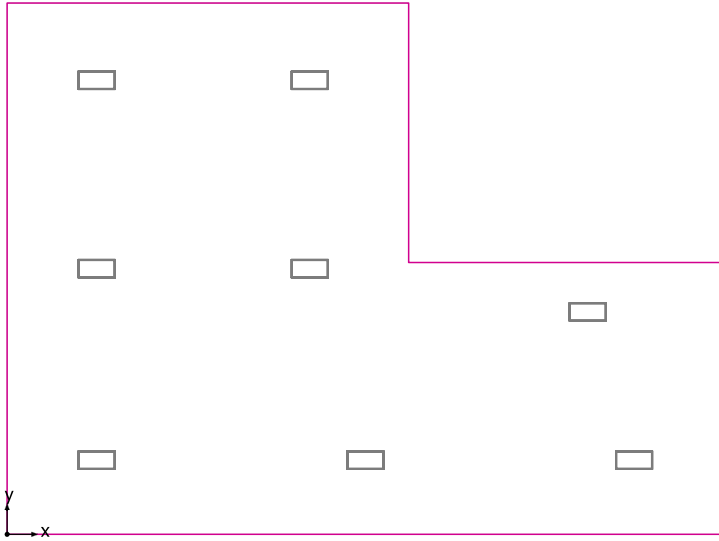
Room 1



DECO LIGHTING, LLC DHL-LP-2-90-40-UNV-F 2' 90W 4000K Low-Profile High Bay Luminaire Frosted Lens

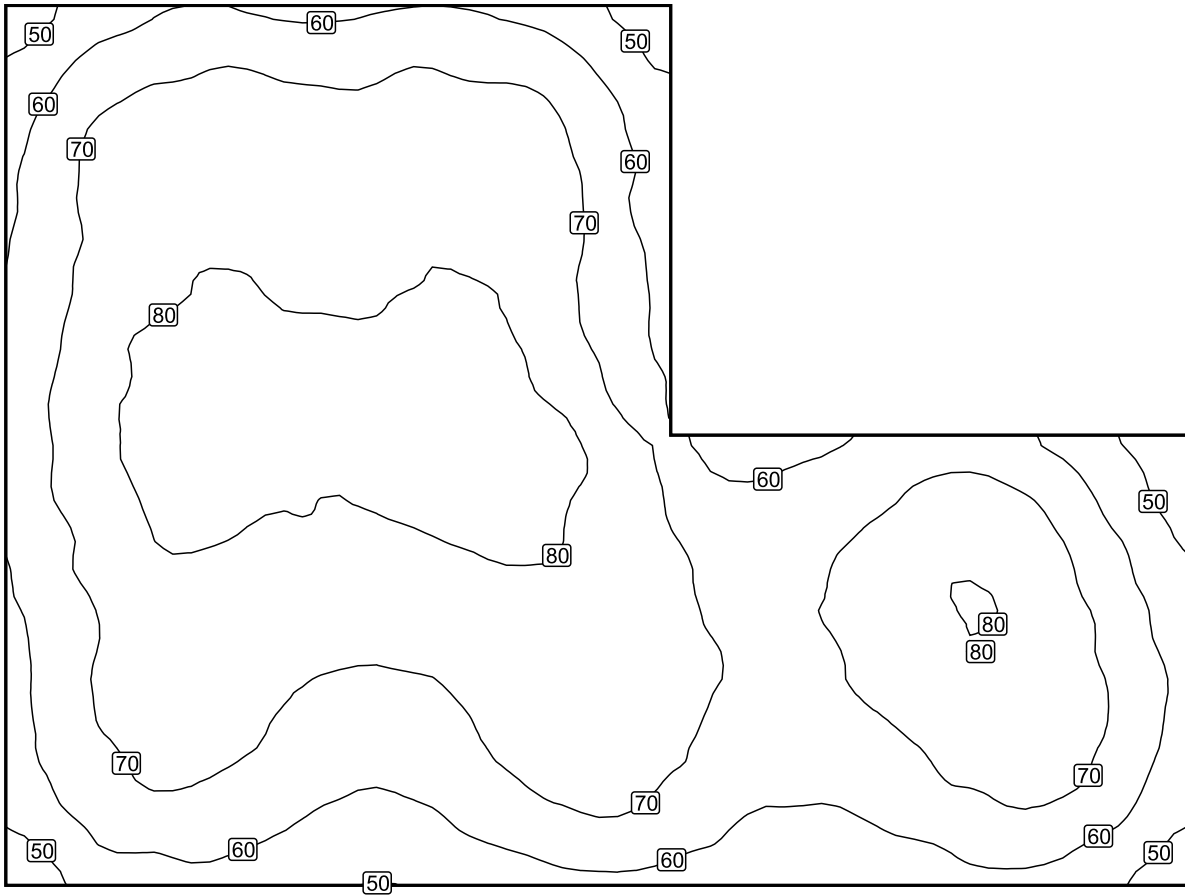
No.	X [ft]	Y [ft]	Mounting height [ft]	Light loss factor
1	4.833	4.000	13.000	0.90
2	19.334	4.000	13.000	0.90
3	33.833	4.000	13.000	0.90
4	4.833	14.334	13.000	0.90
5	16.334	14.334	13.000	0.90
6	4.833	24.500	13.000	0.90
7	16.334	24.500	13.000	0.90
8	31.334	12.000	13.000	0.90

Workplane (Room 1) / Perpendicular illuminance (adaptive)



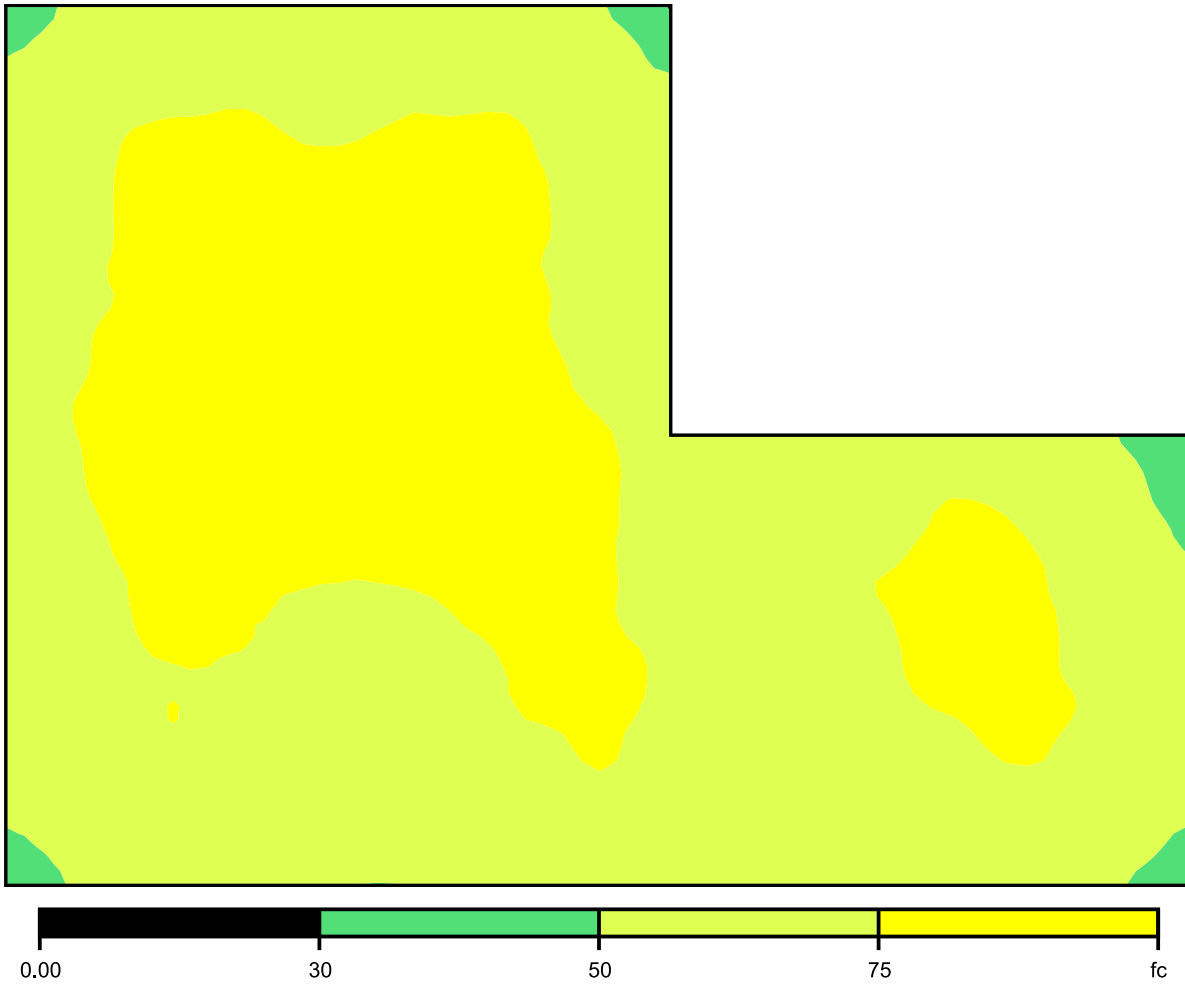
Workplane (Room 1): Perpendicular illuminance (adaptive) (Surface)
Light scene: Light scene 1
Average: 69.9 fc (Target: ≥ 69.7 fc), Min: 42.3 fc, Max: 85.8 fc, Mean/Min: 1.65, Max/Min: 2.03
Height: 2.500 ft, Wall zone: 0.000 ft

Isolines [fc]



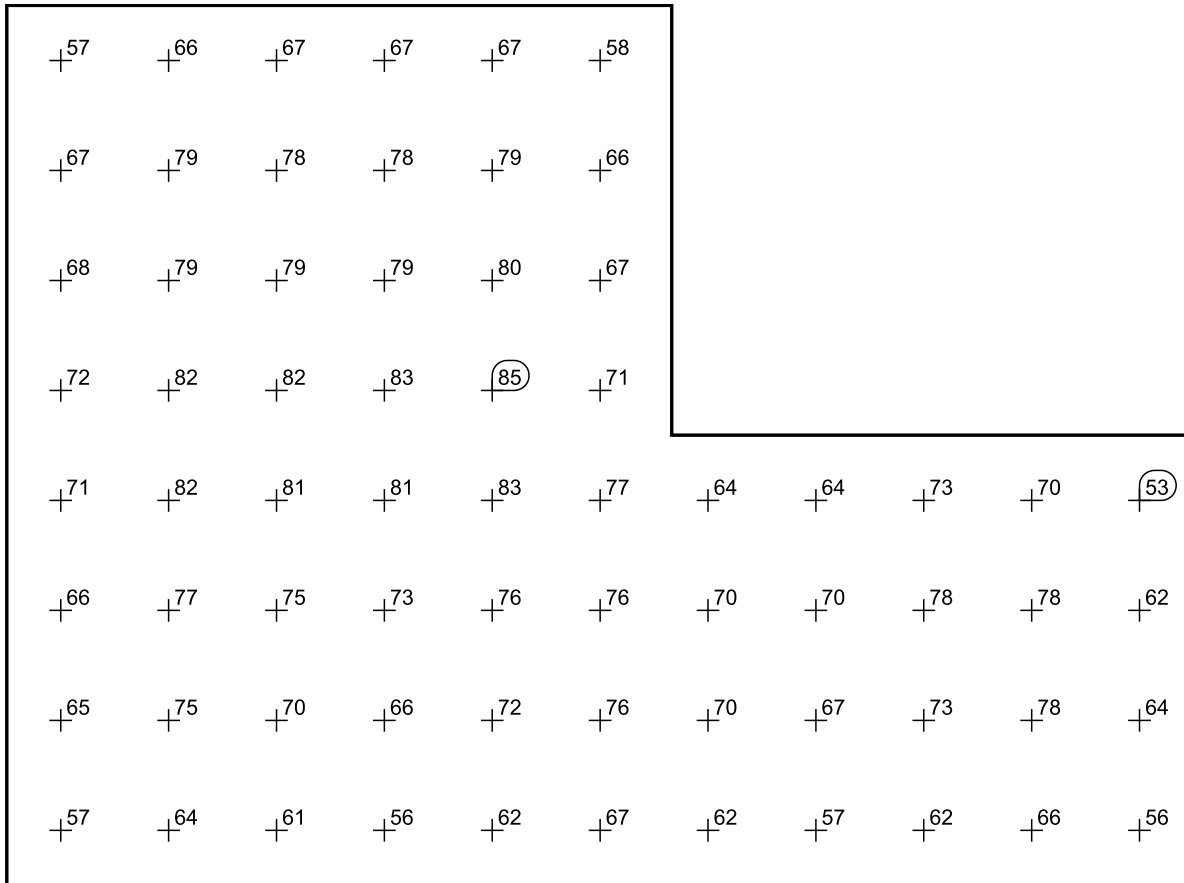
Scale: 1 : 75

False colors [fc]



Scale: 1 : 75

Value grid [fc]



Scale: 1 : 75