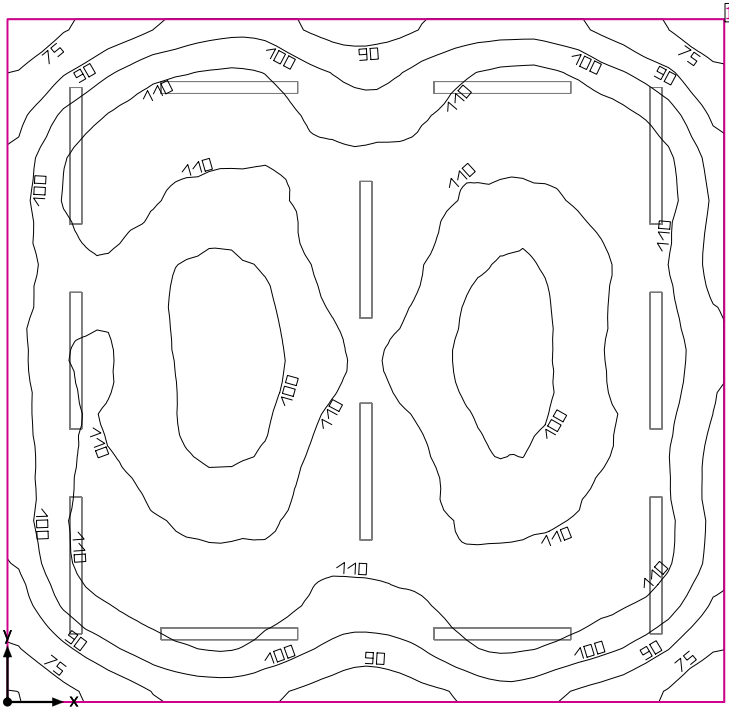


Room 1



Clearance height: 7.750 ft, Reflection factors: Ceiling 70.0%, Walls 50.0%, Floor 20.0%, Light loss factor: 0.90

Workplane

Surface	Result	Average (Target)	Min	Max	Mean/Min	Max/Min
1 Workplane (Room 1)	Perpendicular illuminance (adaptive) [fc] Height: 2.500 ft, Wall zone: 0.000 ft	105 (≥ 92.9)	59.6	118	1.76	1.98

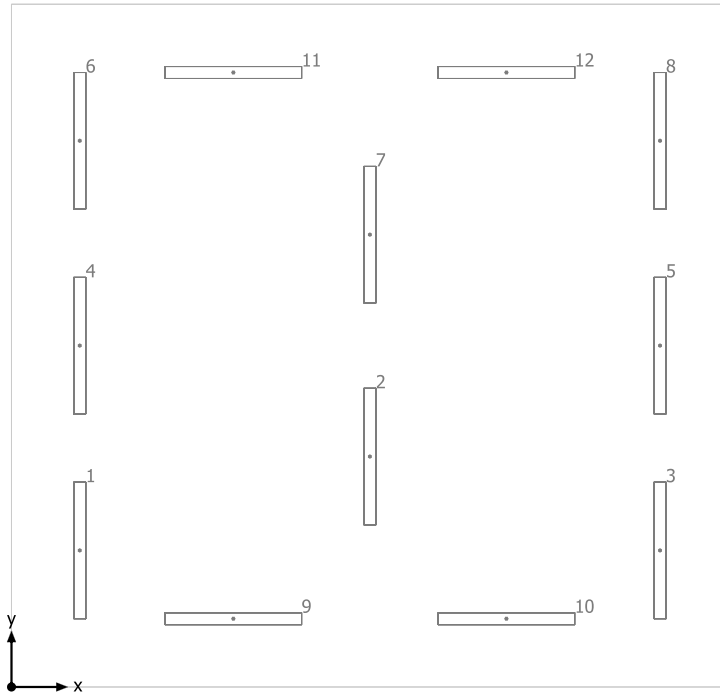
#	Luminaire	Φ(Luminaire) [lm]	Power [W]	Luminous efficacy [lm/W]
12	JAMES INDUSTRY GROUP CO LTD - ZY-T8-18W1200 BINT 5000K 2- LED TUBES	5499	55.0	100.0
Total via all luminaires		65988	660.0	100.0

Lighting power density: 1.57 W/sq ft = 0.14 W/sq ft/10 fc (Floor area of room 420.01 sq ft)

Consumption: 1500 kWh/a of maximum 1400 kWh/a

The energy consumption quantities do not take into account light scenes and their dimming levels.

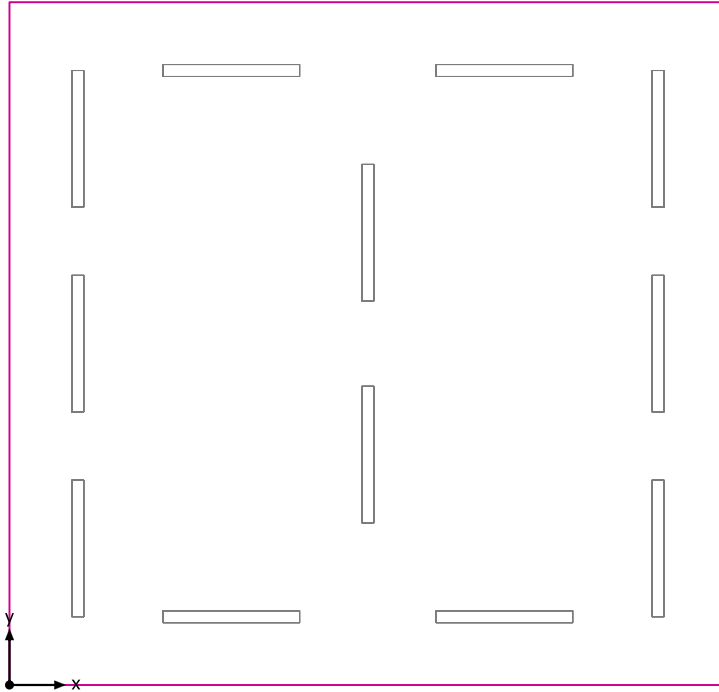
Room 1



JAMES INDUSTRY GROUP CO LTD ZY-T8-18W1200 BINT 5000K 2-LED TUBES

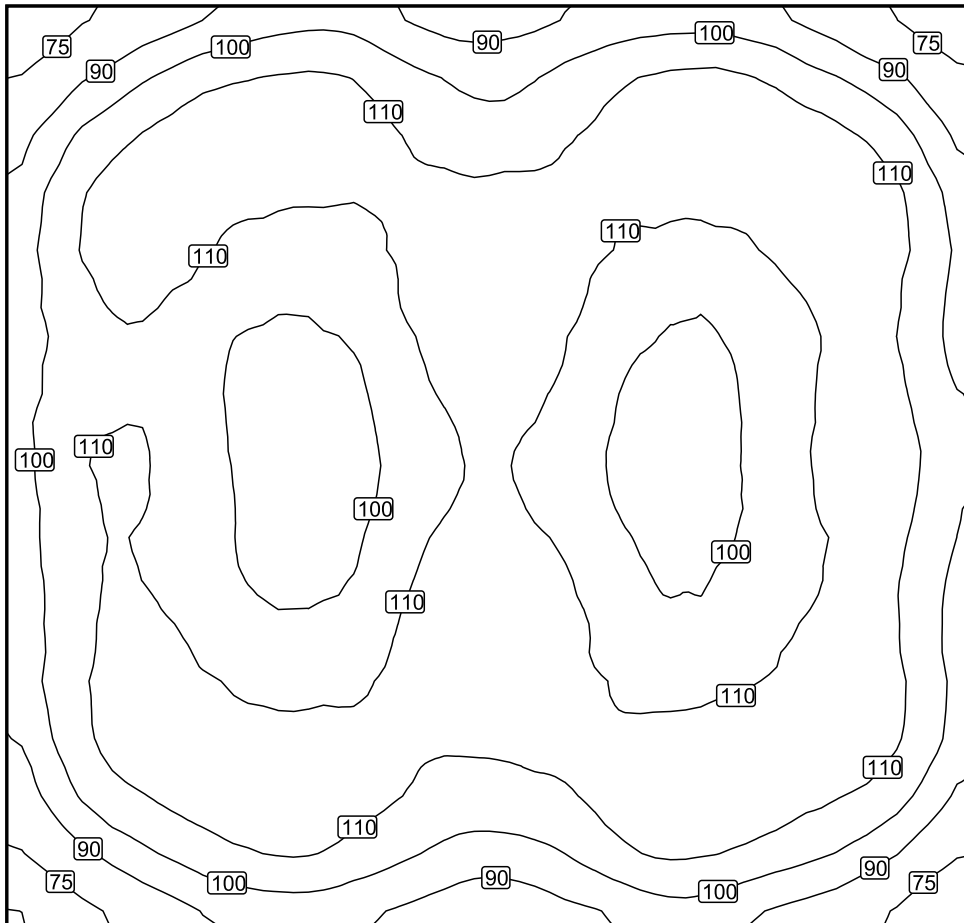
No.	X [ft]	Y [ft]	Mounting height [ft]	Light loss factor
1	2.000	4.000	7.750	0.90
2	10.500	6.750	7.750	0.90
3	19.000	4.000	7.750	0.90
4	2.000	10.000	7.750	0.90
5	19.000	10.000	7.750	0.90
6	2.000	16.000	7.750	0.90
7	10.500	13.250	7.750	0.90
8	19.000	16.000	7.750	0.90
9	6.500	2.000	7.750	0.90
10	14.500	2.000	7.750	0.90
11	6.500	18.000	7.750	0.90
12	14.500	18.000	7.750	0.90

Workplane (Room 1) / Perpendicular illuminance (adaptive)



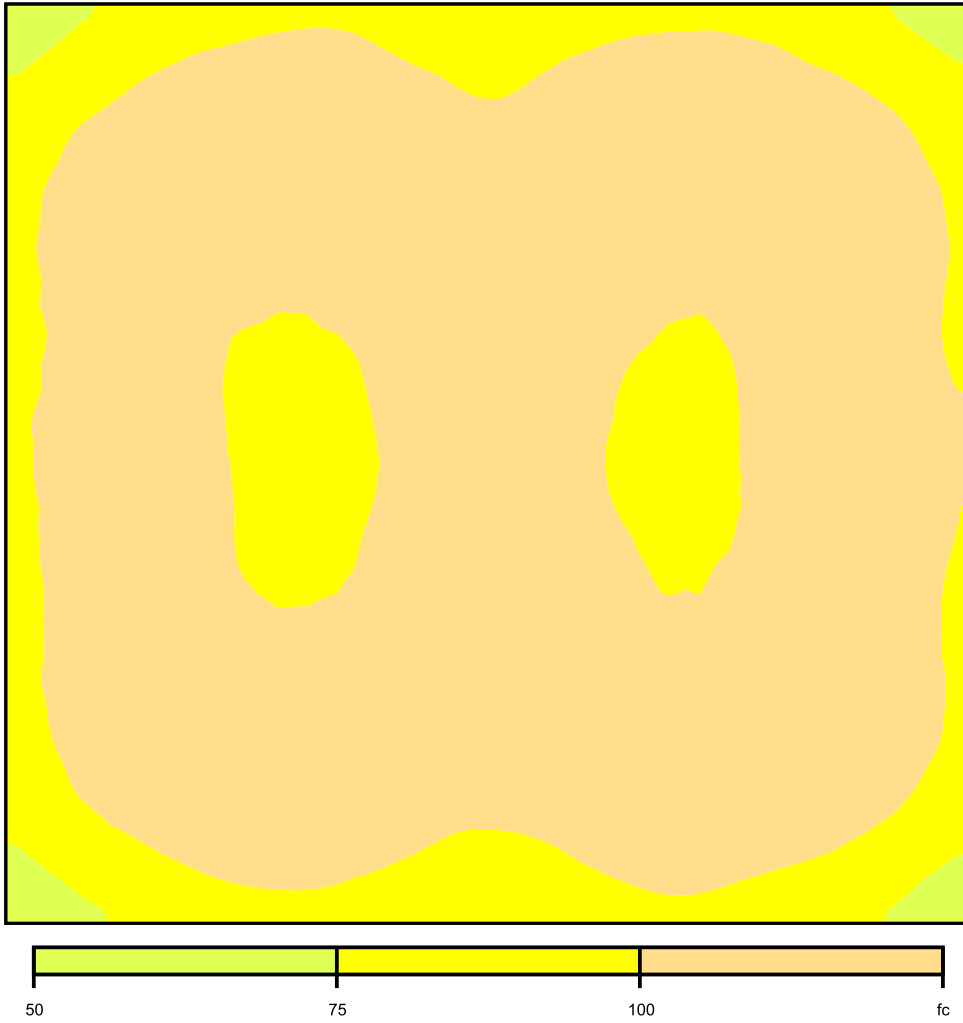
Workplane (Room 1): Perpendicular illuminance (adaptive) (Surface)
Light scene: Light scene 1
Average: 105 fc (Target: ≥ 92.9 fc), Min: 59.6 fc, Max: 118 fc, Mean/Min: 1.76, Max/Min: 1.98
Height: 2.500 ft, Wall zone: 0.000 ft

Isolines [fc]



Scale: 1 : 50

False colors [fc]



Scale: 1 : 50

Value grid [fc]

+79	+96	+106	+102	+93	+102	+107	+98	+81
+100	+114	+115	+112	+108	+111	+116	+116	+102
+105	+112	+105	+109	(117)	+110	+105	+113	+108
+104	+107	+97	+104	+114	+105	+98	+109	+107
+106	+108	+96	+100	+111	+101	+97	+110	+110
+104	+108	+98	+104	+116	+106	+99	+108	+107
+104	+113	+106	+110	(117)	+110	+106	+113	+106
+98	+115	+116	+112	+108	+112	+116	+115	+102
(77)	+96	+105	+99	+91	+99	+105	+96	+79

Scale: 1 : 50