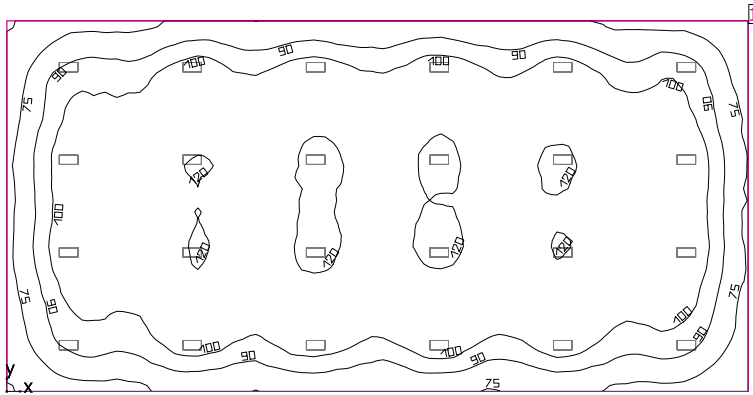


Room 1



Clearance height: 14.000 ft, Reflection factors: Ceiling 70.0%, Walls 50.0%, Floor 20.0%, Light loss factor: 0.90

Workplane

Surface	Result	Average (Target)	Min	Max	Mean/Min	Max/Min
1 Workplane (Room 1)	Perpendicular illuminance (adaptive) [fc] Height: 2.500 ft, Wall zone: 0.000 ft	102 (≥ 92.9)	48.5	124	2.09	2.55

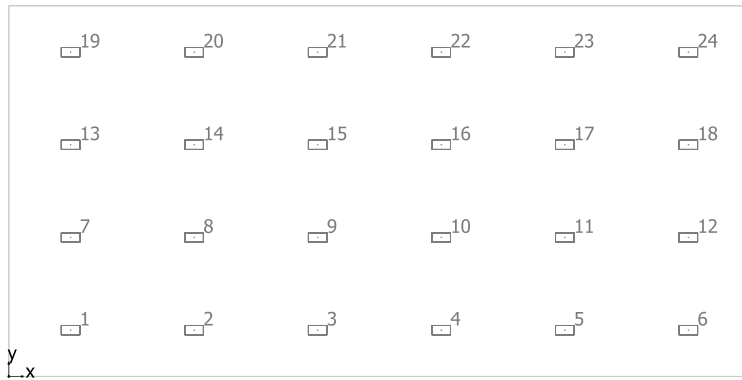
#	Luminaire	Φ(Luminaire) [lm]	Power [W]	Luminous efficacy [lm/W]
24	JAMES INDUSTRY GROUP CO LTD - ZY-H2-110W XDZ*(5000K)	16406	110.0	149.1
Total via all luminaires		393744	2640.0	149.1

Lighting power density: 0.82 W/sq ft = 0.08 W/sq ft/10 fc (Floor area of room 3200.07 sq ft)

Consumption: 5950 kWh/a of maximum 10450 kWh/a

The energy consumption quantities do not take into account light scenes and their dimming levels.

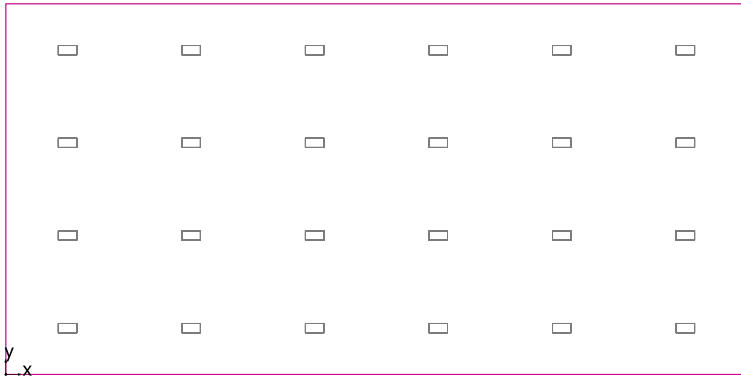
Room 1



JAMES INDUSTRY GROUP CO LTD ZY-H2-110W XDZ*(5000K)

No.	X [ft]	Y [ft]	Mounting height [ft]	Light loss factor
1	6.667	5.000	14.000	0.90
2	20.000	5.000	14.000	0.90
3	33.333	5.000	14.000	0.90
4	46.667	5.000	14.000	0.90
5	60.000	5.000	14.000	0.90
6	73.333	5.000	14.000	0.90
7	6.667	15.000	14.000	0.90
8	20.000	15.000	14.000	0.90
9	33.333	15.000	14.000	0.90
10	46.667	15.000	14.000	0.90
11	60.000	15.000	14.000	0.90
12	73.333	15.000	14.000	0.90
13	6.667	25.000	14.000	0.90
14	20.000	25.000	14.000	0.90
15	33.333	25.000	14.000	0.90
16	46.667	25.000	14.000	0.90
17	60.000	25.000	14.000	0.90
18	73.333	25.000	14.000	0.90
19	6.667	35.000	14.000	0.90
20	20.000	35.000	14.000	0.90
21	33.333	35.000	14.000	0.90
22	46.667	35.000	14.000	0.90
23	60.000	35.000	14.000	0.90
24	73.333	35.000	14.000	0.90

Workplane (Room 1) / Perpendicular illuminance (adaptive)



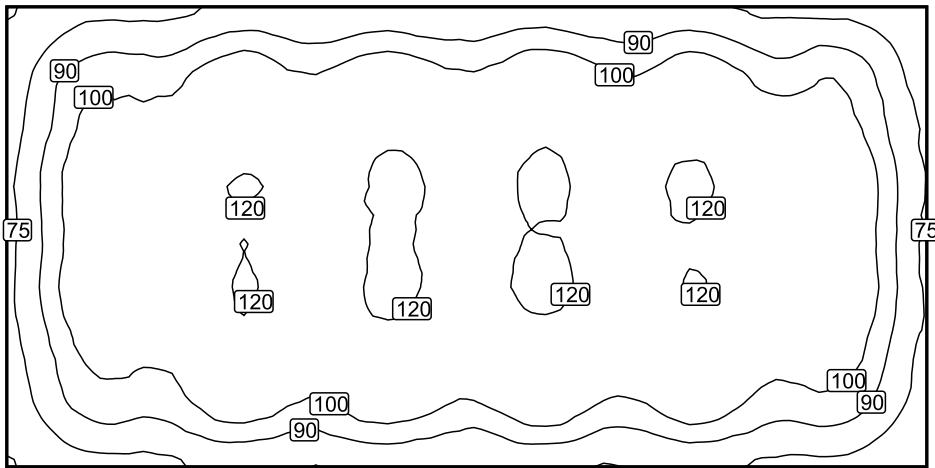
Workplane (Room 1): Perpendicular illuminance (adaptive) (Surface)

Light scene: Light scene 1

Average: 102 fc (Target: ≥ 92.9 fc), Min: 48.5 fc, Max: 124 fc, Mean/Min: 2.09, Max/Min: 2.55

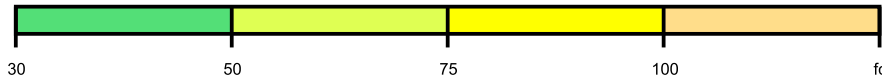
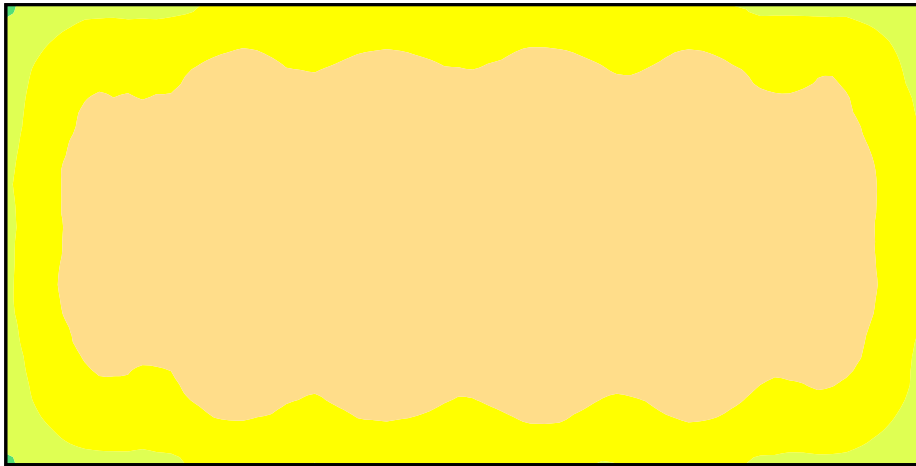
Height: 2.500 ft, Wall zone: 0.000 ft

Isolines [fc]



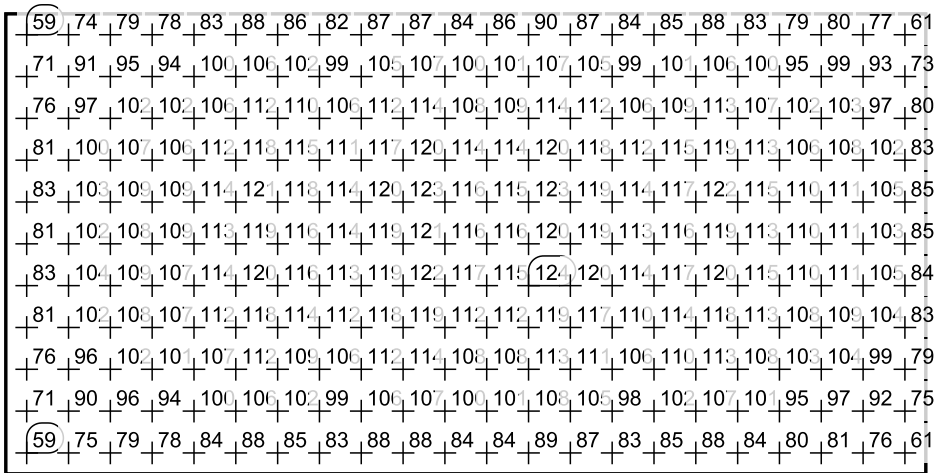
Scale: 1 : 200

False colors [fc]



Scale: 1 : 200

Value grid [fc]



Scale: 1 : 200