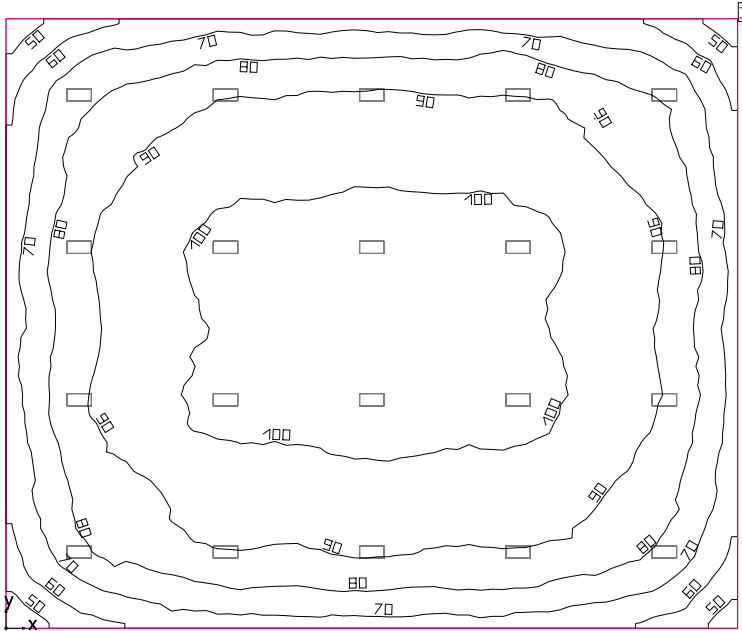


Room 1



Clearance height: 16.000 ft, Reflection factors: Ceiling 70.0%, Walls 50.0%, Floor 20.0%, Light loss factor: 0.90

Workplane

Surface	Result	Average (Target)	Min	Max	Mean/Min	Max/Min
1 Workplane (Room 1)	Perpendicular illuminance (adaptive) [fc] Height: 2.500 ft, Wall zone: 0.000 ft	87.3 (≥ 92.9)	42.8	106	2.04	2.47

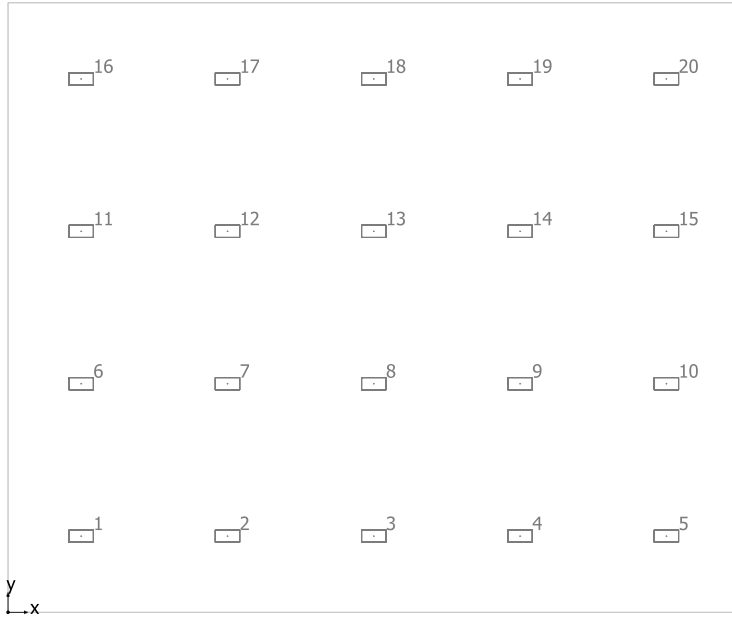
#	Luminaire	Φ(Luminaire) [lm]	Power [W]	Luminous efficacy [lm/W]
20	JAMES INDUSTRY GROUP CO LTD - ZY-H2-110W XDZ*(5000K)	16406	110.0	149.1
Total via all luminaires		328120	2200.0	149.1

Lighting power density: 0.73 W/sq ft = 0.08 W/sq ft/10 fc (Floor area of room 3000.07 sq ft)

Consumption: 4950 kWh/a of maximum 9800 kWh/a

The energy consumption quantities do not take into account light scenes and their dimming levels.

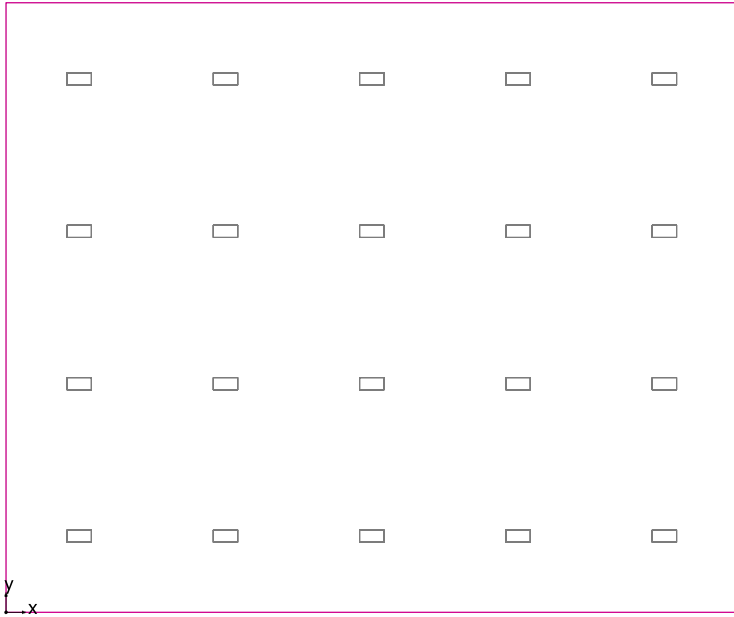
Room 1



JAMES INDUSTRY GROUP CO LTD ZY-H2-110W XDZ*(5000K)

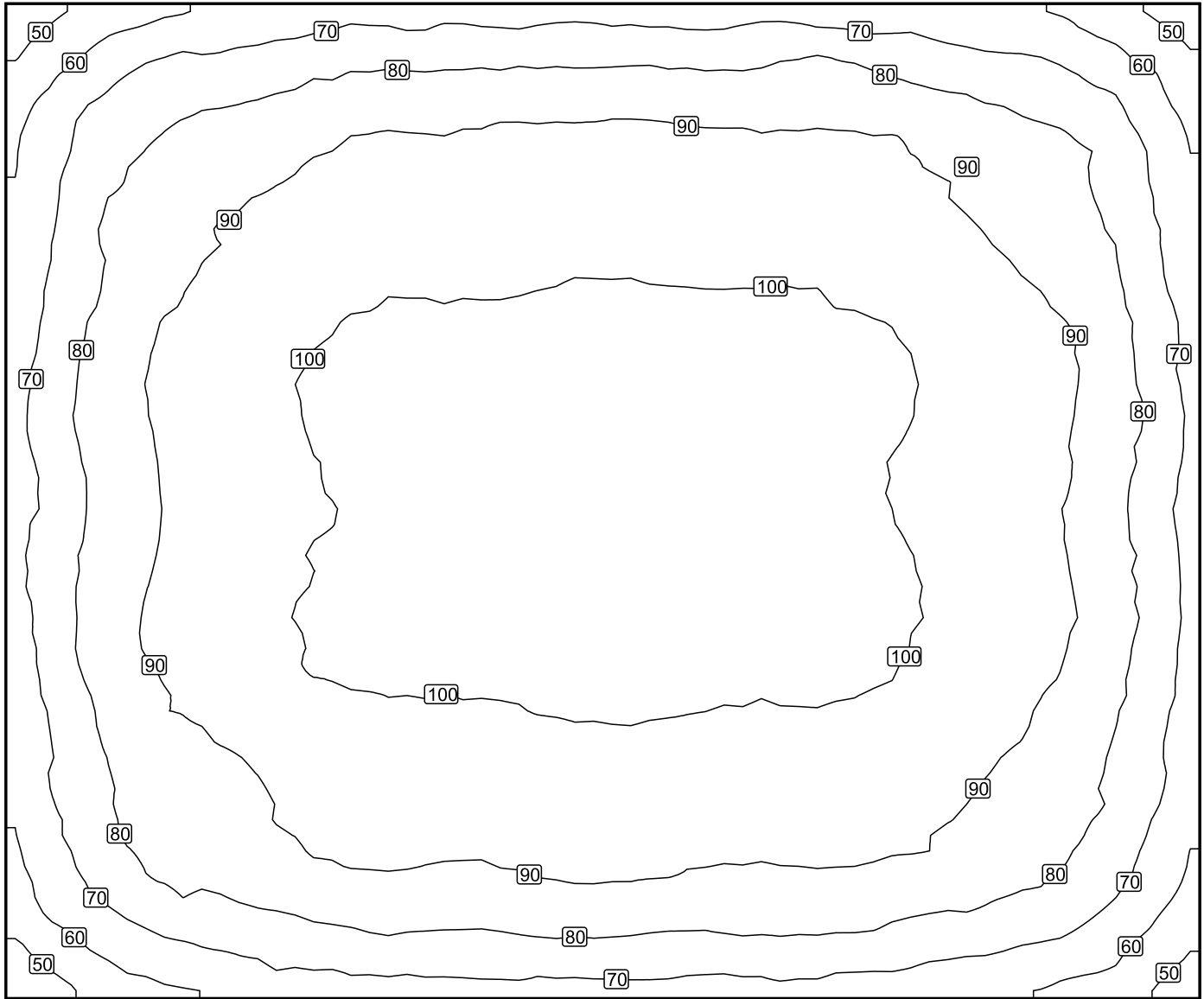
No.	X [ft]	Y [ft]	Mounting height [ft]	Light loss factor
1	6.000	6.250	16.000	0.90
2	18.000	6.250	16.000	0.90
3	30.000	6.250	16.000	0.90
4	42.000	6.250	16.000	0.90
5	54.000	6.250	16.000	0.90
6	6.000	18.750	16.000	0.90
7	18.000	18.750	16.000	0.90
8	30.000	18.750	16.000	0.90
9	42.000	18.750	16.000	0.90
10	54.000	18.750	16.000	0.90
11	6.000	31.250	16.000	0.90
12	18.000	31.250	16.000	0.90
13	30.000	31.250	16.000	0.90
14	42.000	31.250	16.000	0.90
15	54.000	31.250	16.000	0.90
16	6.000	43.750	16.000	0.90
17	18.000	43.750	16.000	0.90
18	30.000	43.750	16.000	0.90
19	42.000	43.750	16.000	0.90
20	54.000	43.750	16.000	0.90

Workplane (Room 1) / Perpendicular illuminance (adaptive)



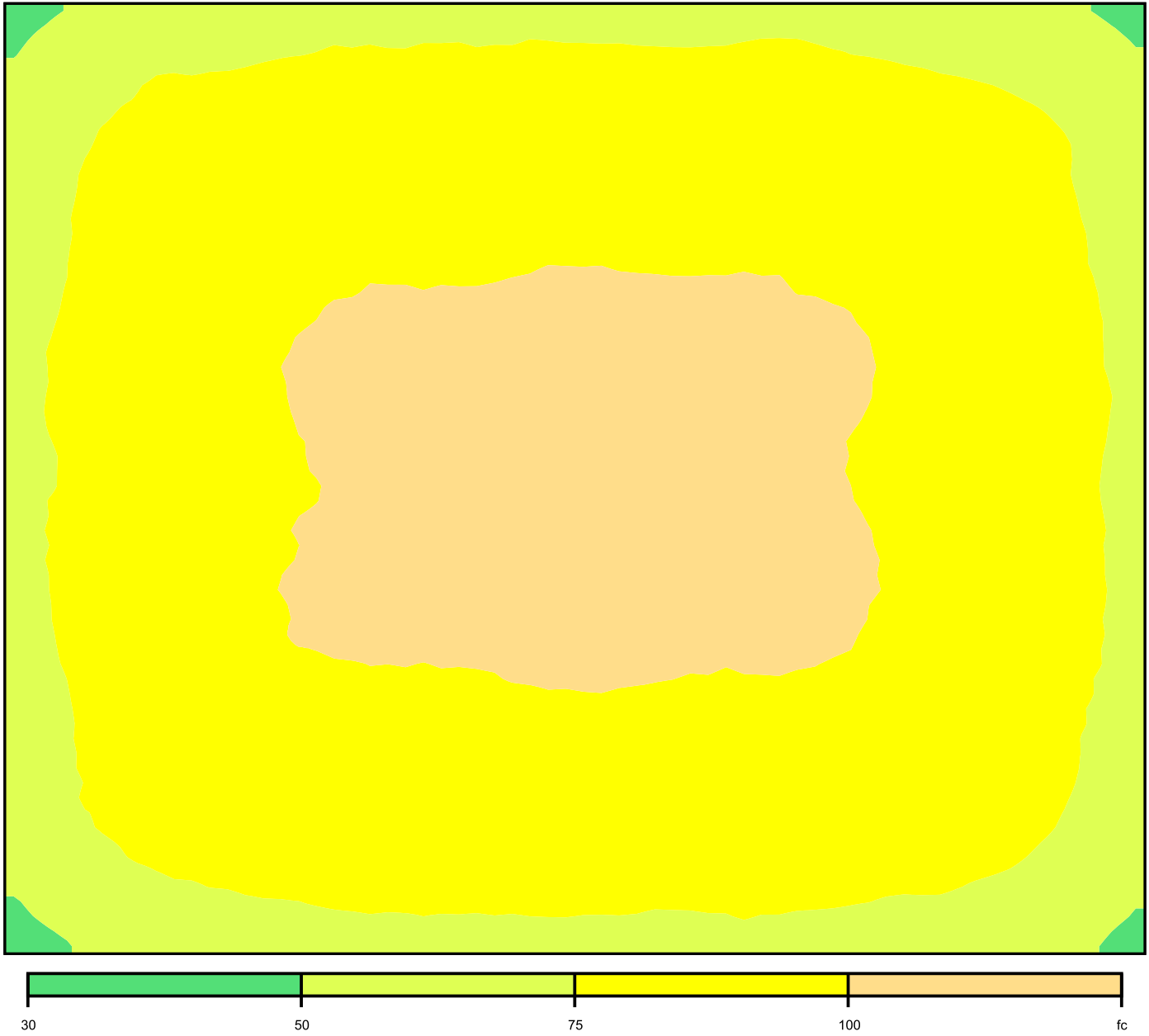
Workplane (Room 1): Perpendicular illuminance (adaptive) (Surface)
Light scene: Light scene 1
Average: 87.3 fc (Target: ≥ 92.9 fc), Min: 42.8 fc, Max: 106 fc, Mean/Min: 2.04, Max/Min: 2.47
Height: 2.500 ft, Wall zone: 0.000 ft

Isolines [fc]



Scale: 1 : 100

False colors [fc]



Scale: 1 : 100

Value grid [fc]

+56	+68	+72	+76	+77	+77	+77	+76	+78	+72	+69	+57
+67	+81	+86	+91	+92	+94	+93	+92	+92	+88	+83	+69
+71	+86	+92	+97	+97	+98	+98	+98	+97	+92	+87	+73
+75	+90	+97	+102	+102	104	104	104	+103	+98	+93	+76
+76	+90	+97	+102	+102	104	104	+102	+101	+98	+92	+77
+76	+90	+97	+102	+102	104	104	+102	+102	+98	+91	+77
+75	+91	+96	+102	+102	104	104	+102	+103	+97	+91	+76
+71	+86	+91	+97	+98	+98	+99	+98	+97	+93	+87	+73
+68	+82	+87	+92	+91	+93	+93	+91	+91	+88	+83	+68
55	+67	+72	+76	+76	+77	+77	+77	+76	+72	+68	+57

Scale: 1 : 100