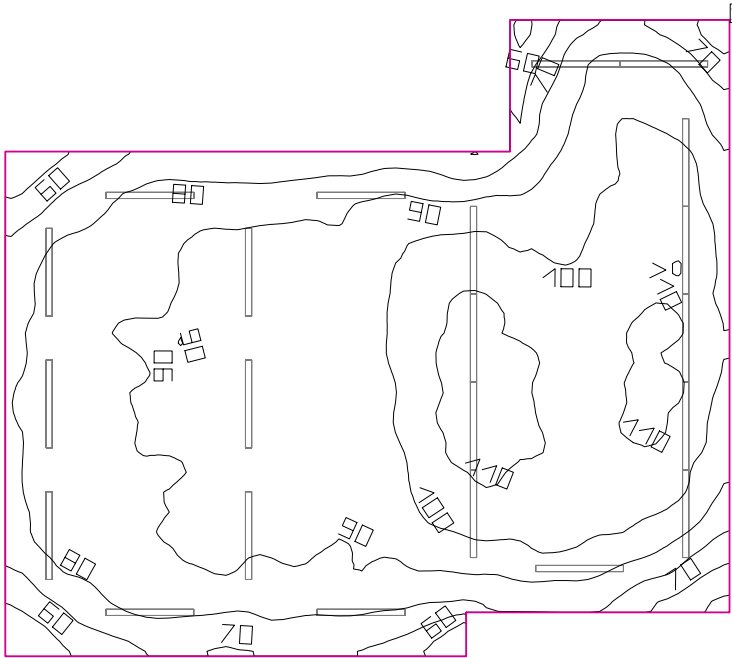


## Room 2



Clearance height: 10.000 ft, Reflection factors: Ceiling 70.0%, Walls 50.0%, Floor 20.0%, Light loss factor: 0.90

### Workplane

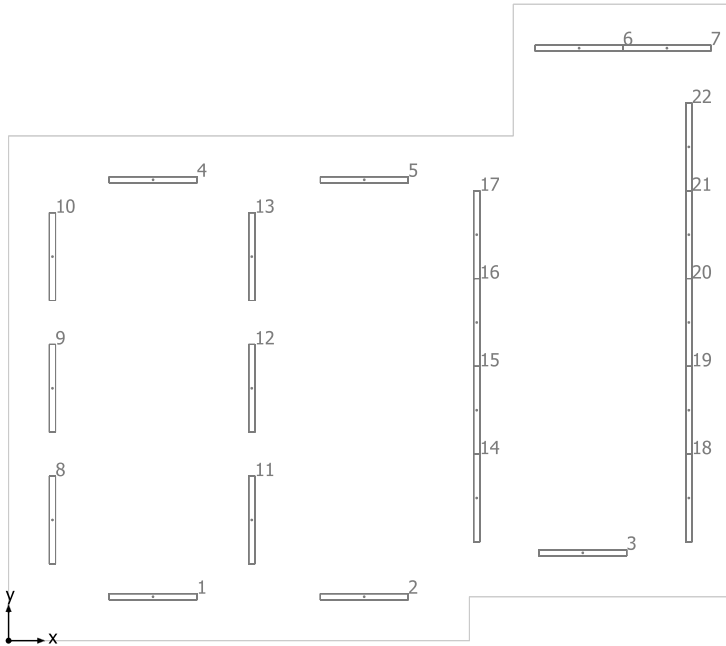
Surface	Result	Average (Target)	Min	Max	Mean/Min	Max/Min
1 Workplane 1	Perpendicular illuminance (adaptive) [fc] Height: 2.500 ft, Wall zone: 0.000 ft	91.54 (≥ 92.90)	48.23	115	1.90	2.38

#	Luminaire	Φ(Luminaire) [lm]	Power [W]	Luminous efficacy [lm/W]
22	JAMES INDUSTRY GROUP CO LTD - ZY-ST4FT40(5000K) 5400LM	5399	40.0	135.0
Total via all luminaires		118778	880.0	135.0

Lighting power density: 1.11 W/sq ft = 0.11 W/sq ft/10 fc (Floor area of room 795.00 sq ft)

The energy consumption quantities refer to the lights planned for the room without taking into account light scenes and their dimming levels.  
Consumption: 2000 kWh/a of maximum 2600 kWh/a

## Room 2



JAMES INDUSTRY GROUP CO LTD ZY-ST4FT40(5000K) 5400LM

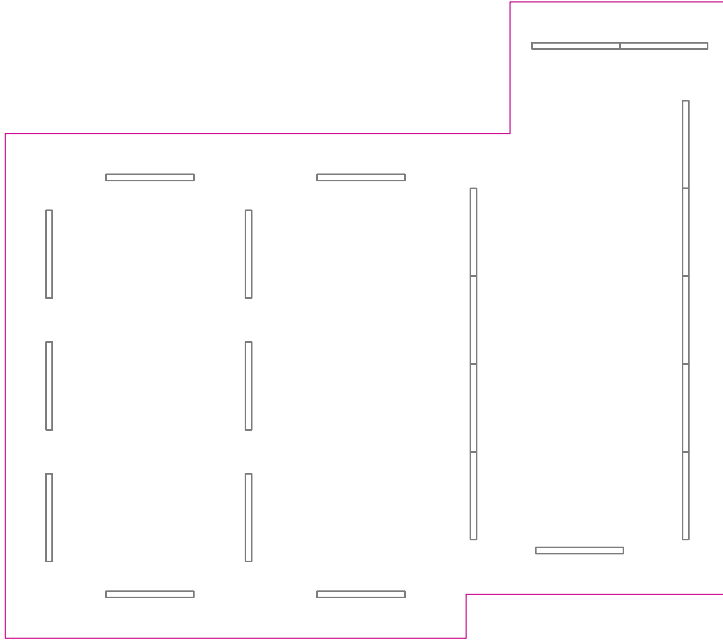
No.	X [ft]	Y [ft]	Mounting height [ft]
1	6.583	2.000	10.000
2	16.207	2.000	10.000
3	26.167	4.000	10.000
4	6.586	21.000	10.000
5	16.210	21.000	10.000
6	26.000	27.000	10.000
7	30.000	27.000	10.000
8	2.000	5.500	10.000
9	2.000	11.500	10.000
10	2.000	17.500	10.000
11	11.083	5.500	10.000
12	11.083	11.500	10.000
13	11.083	17.500	10.000
14	21.334	6.500	10.000
15	21.334	10.500	10.000
16	21.334	14.500	10.000
17	21.334	18.500	10.000
18	31.000	6.500	10.000
19	31.000	10.500	10.000
20	31.000	14.500	10.000
21	31.000	18.500	10.000

---

No.	X [ft]	Y [ft]	Mounting height [ft]
22	31.000	22.500	10.000

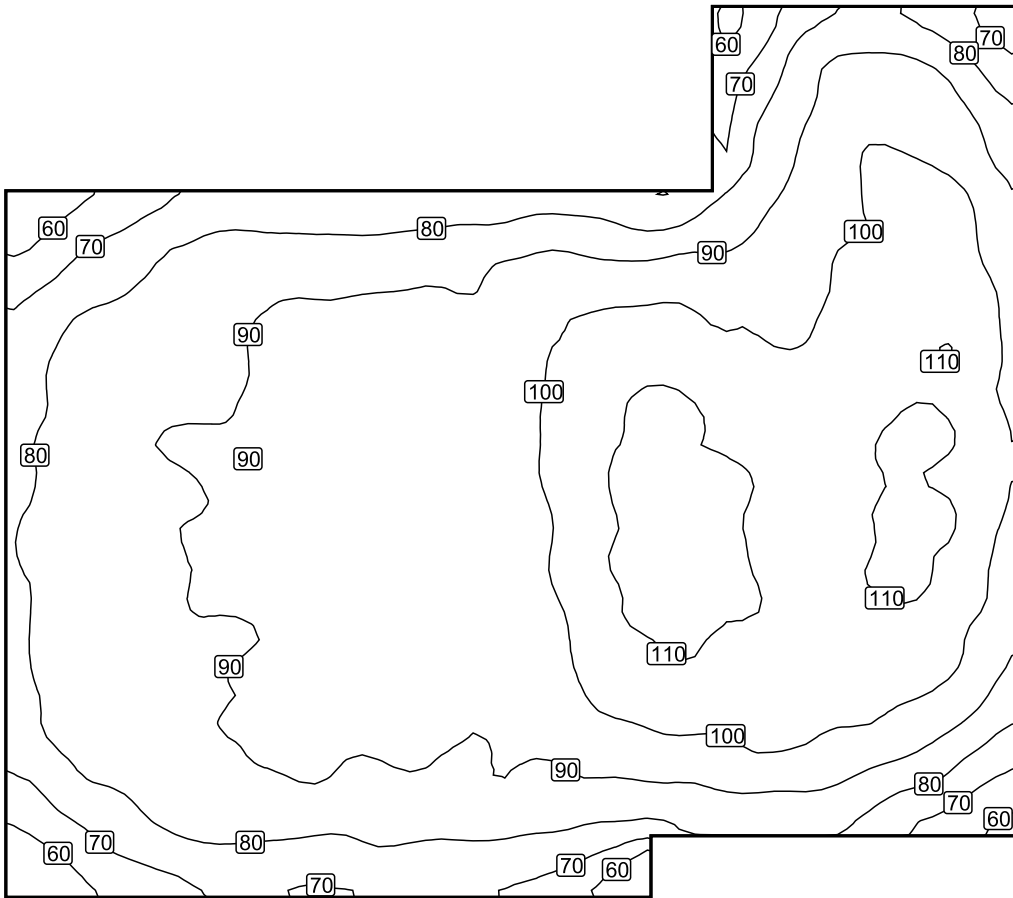
---

## Workplane 1 / Perpendicular illuminance (adaptive)



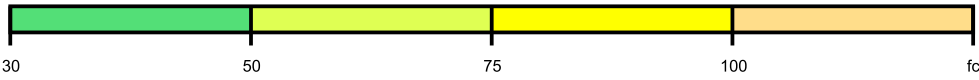
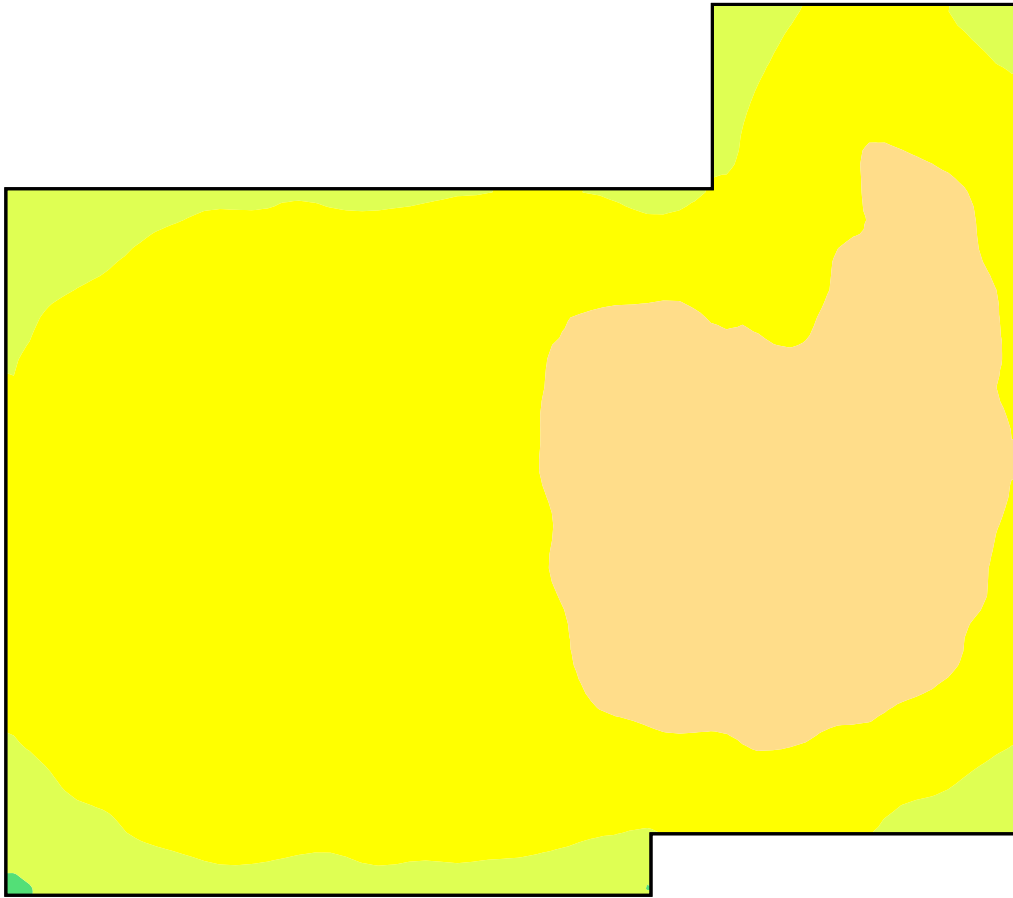
Workplane 1: Perpendicular illuminance (adaptive) (Surface)  
Light scene: Light scene 1  
Average: 91.54 fc (Target:  $\geq 92.90$  fc), Min: 48.23 fc, Max: 115 fc, Mean/Min: 1.90, Max/Min: 2.38  
Height: 2.500 ft, Wall zone: 0.000 ft

## Isolines [fc]



Scale: 1 : 75

## False colors [fc]



Scale: 1 : 75

## Value grid [fc]



Scale: 1 : 75