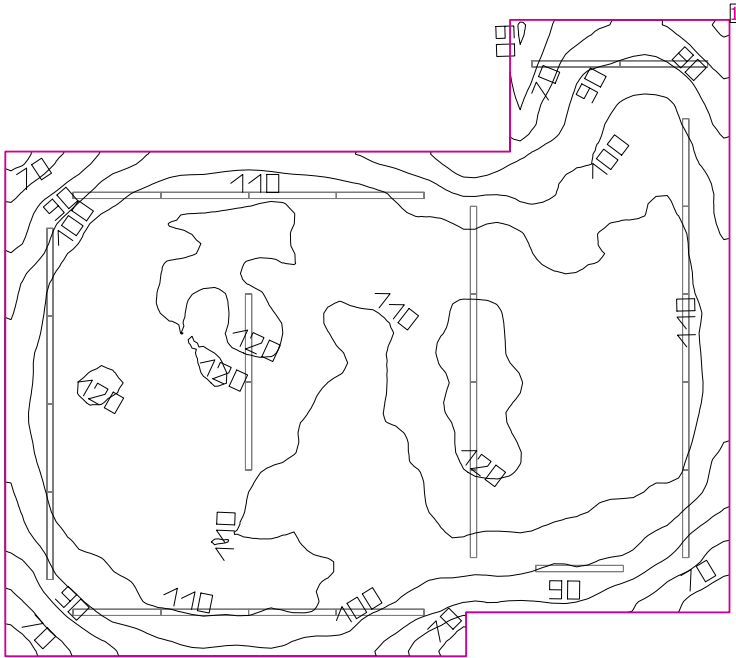


Room 2



Clearance height: 10.000 ft, Reflection factors: Ceiling 70.0%, Walls 50.0%, Floor 20.0%, Light loss factor: 0.90

Workplane

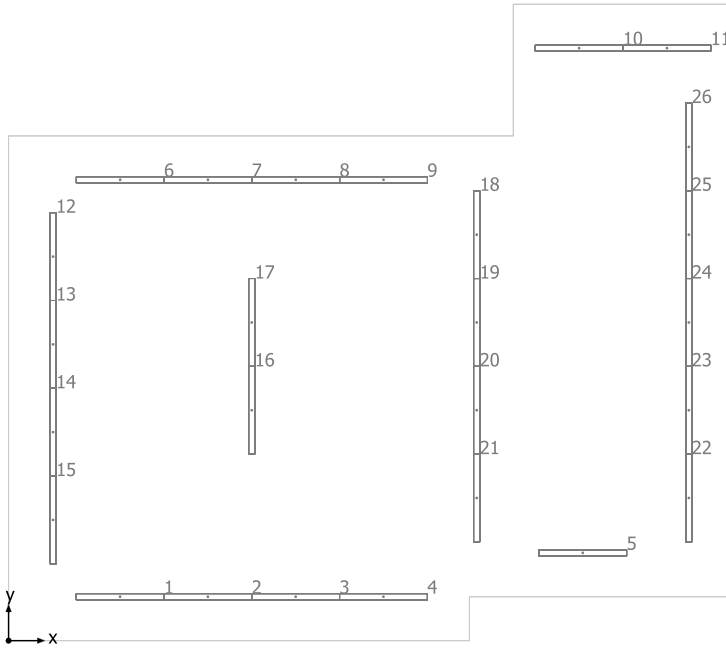
Surface	Result	Average (Target)	Min	Max	Mean/Min	Max/Min
1 Workplane 1	Perpendicular illuminance (adaptive) [fc] Height: 2.500 ft, Wall zone: 0.000 ft	107 (≥ 92.90)	57.95	124	1.85	2.14

#	Luminaire	Φ(Luminaire) [lm]	Power [W]	Luminous efficacy [lm/W]
26	JAMES INDUSTRY GROUP CO LTD - ZY-ST4FT40(5000K) 5400LM	5399	40.0	135.0
Total via all luminaires		140374	1040.0	135.0

Lighting power density: 1.31 W/sq ft = 0.11 W/sq ft/10 fc (Floor area of room 795.00 sq ft)

The energy consumption quantities refer to the lights planned for the room without taking into account light scenes and their dimming levels.
Consumption: 2350 kWh/a of maximum 2600 kWh/a

Room 2

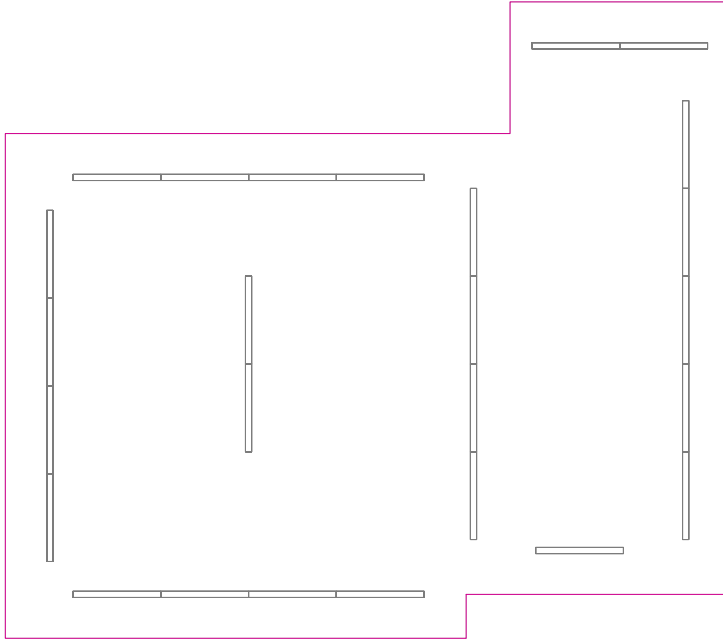


JAMES INDUSTRY GROUP CO LTD ZY-ST4FT40(5000K) 5400LM

No.	X [ft]	Y [ft]	Mounting height [ft]
1	5.083	2.000	10.000
2	9.083	2.000	10.000
3	13.083	2.000	10.000
4	17.083	2.000	10.000
5	26.167	4.000	10.000
6	5.086	21.000	10.000
7	9.086	21.000	10.000
8	13.086	21.000	10.000
9	17.086	21.000	10.000
10	26.000	27.000	10.000
11	30.000	27.000	10.000
12	2.028	17.500	10.000
13	2.028	13.500	10.000
14	2.028	9.500	10.000
15	2.028	5.500	10.000
16	11.083	10.500	10.000
17	11.083	14.500	10.000
18	21.334	18.500	10.000
19	21.334	14.500	10.000
20	21.334	10.500	10.000
21	21.334	6.500	10.000
22	26.000	22.000	10.000
23	26.000	23.500	10.000
24	26.000	25.000	10.000
25	26.000	26.500	10.000
26	26.000	28.000	10.000

No.	X [ft]	Y [ft]	Mounting height [ft]
22	31.000	6.500	10.000
23	31.000	10.500	10.000
24	31.000	14.500	10.000
25	31.000	18.500	10.000
26	31.000	22.500	10.000

Workplane 1 / Perpendicular illuminance (adaptive)



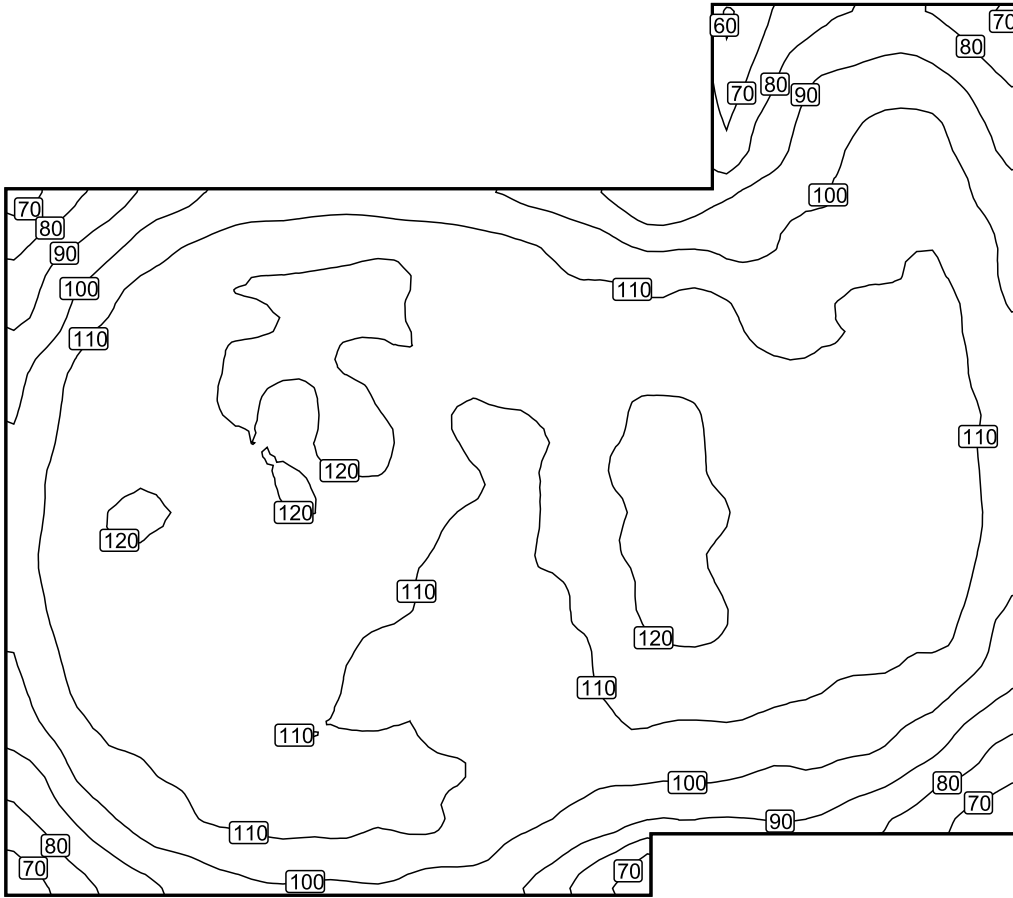
Workplane 1: Perpendicular illuminance (adaptive) (Surface)

Light scene: Light scene 1

Average: 107 fc (Target: ≥ 92.90 fc), Min: 57.95 fc, Max: 124 fc, Mean/Min: 1.85, Max/Min: 2.14

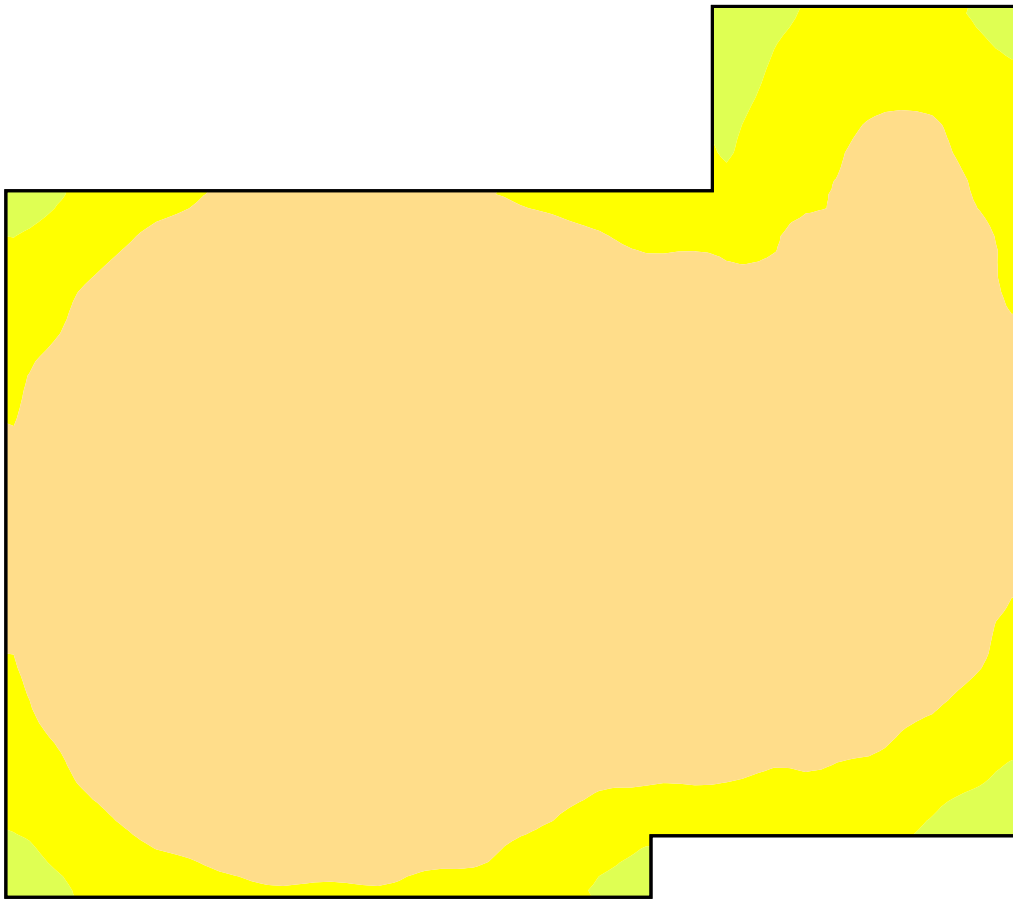
Height: 2.500 ft, Wall zone: 0.000 ft

Isolines [fc]



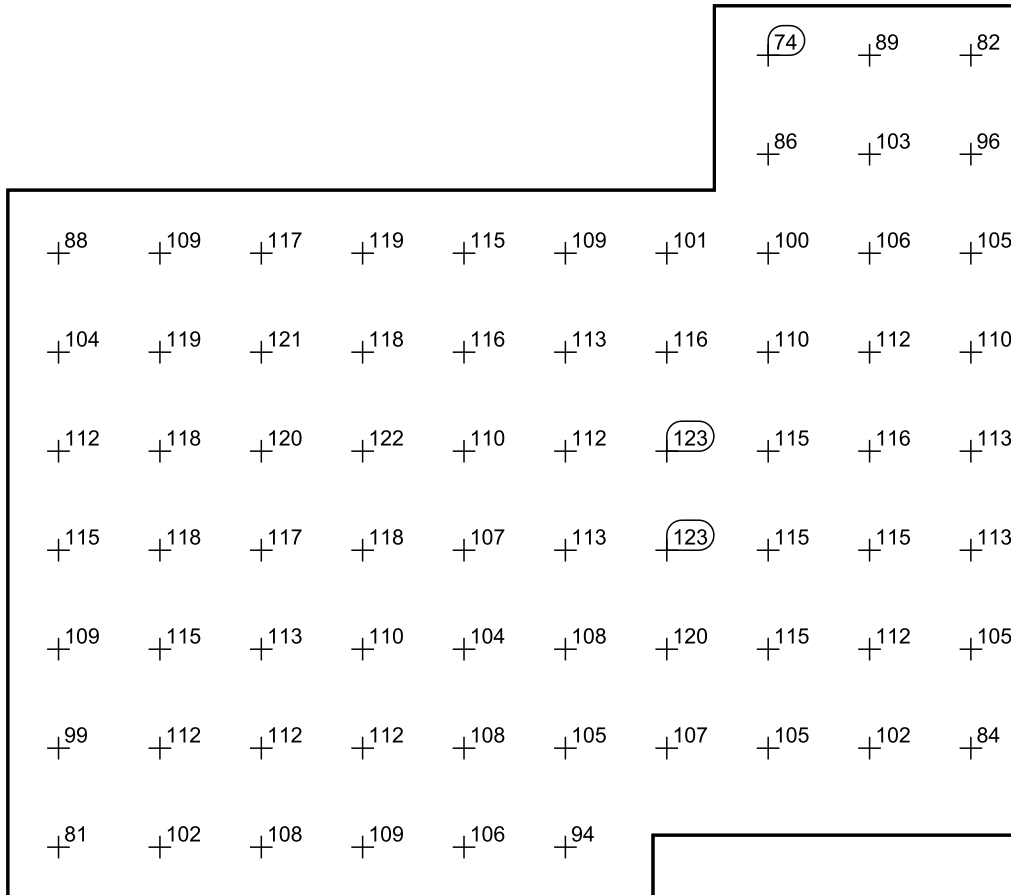
Scale: 1 : 75

False colors [fc]



Scale: 1 : 75

Value grid [fc]



Scale: 1 : 75