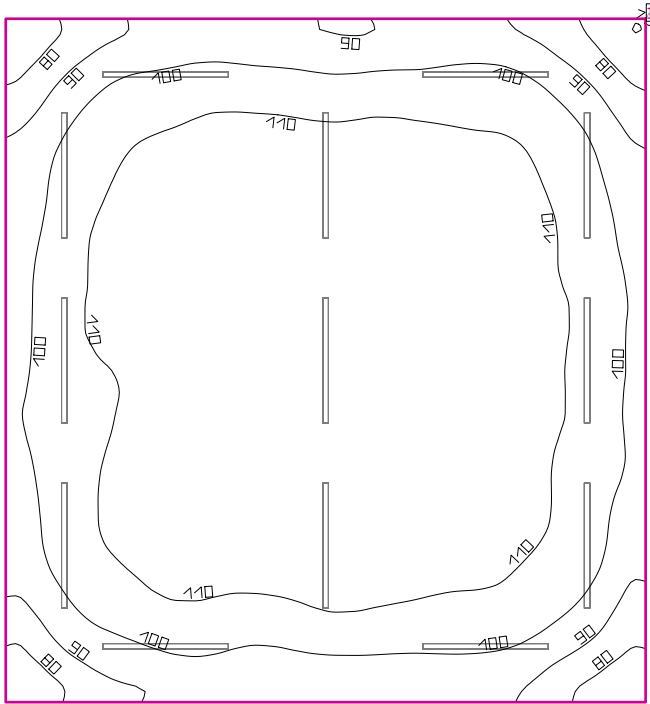
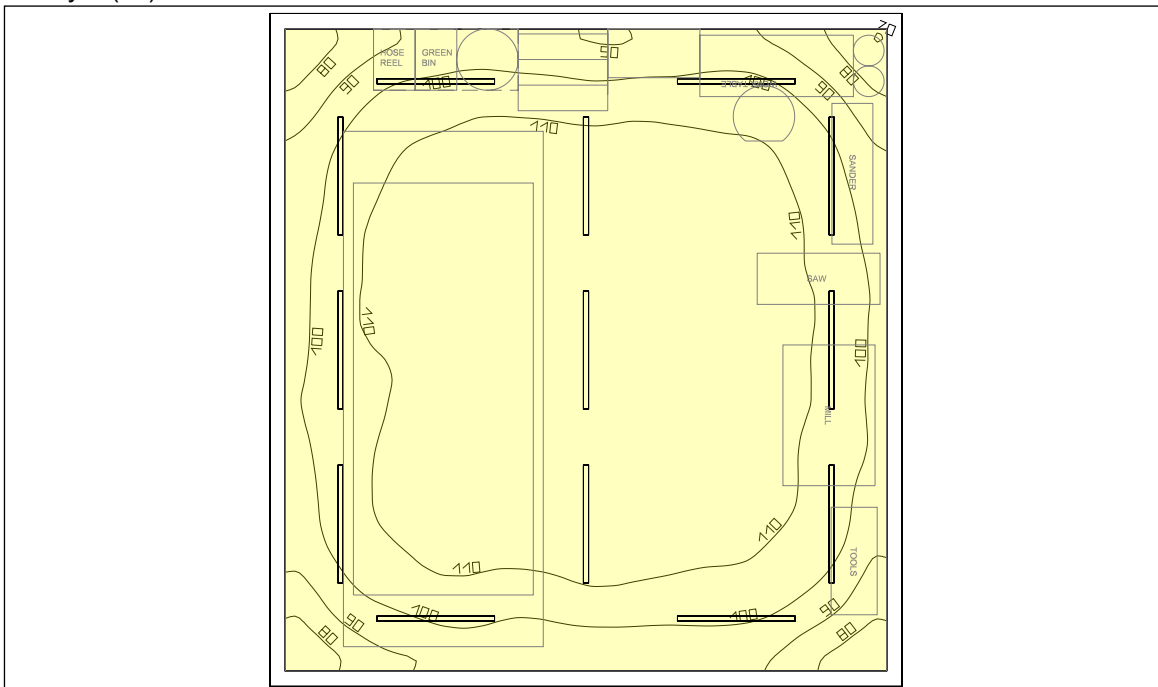


## Room 1

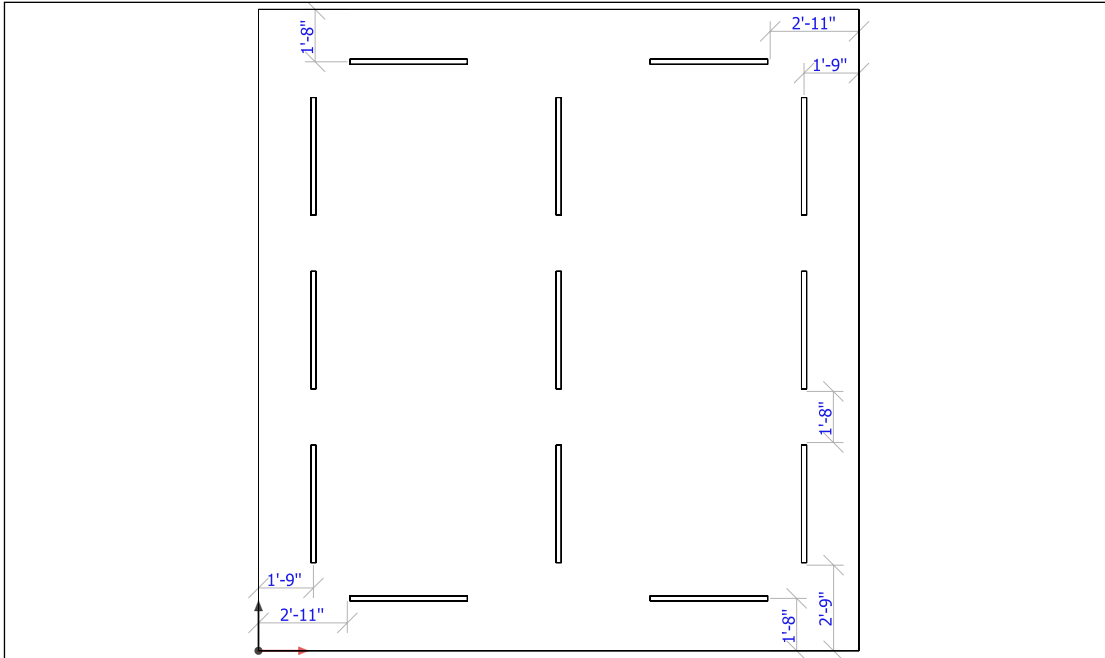


## Storey 1 (12)



Scale: 1 : 75

## Room 1 (13)

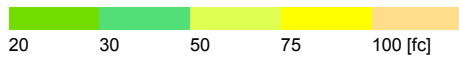
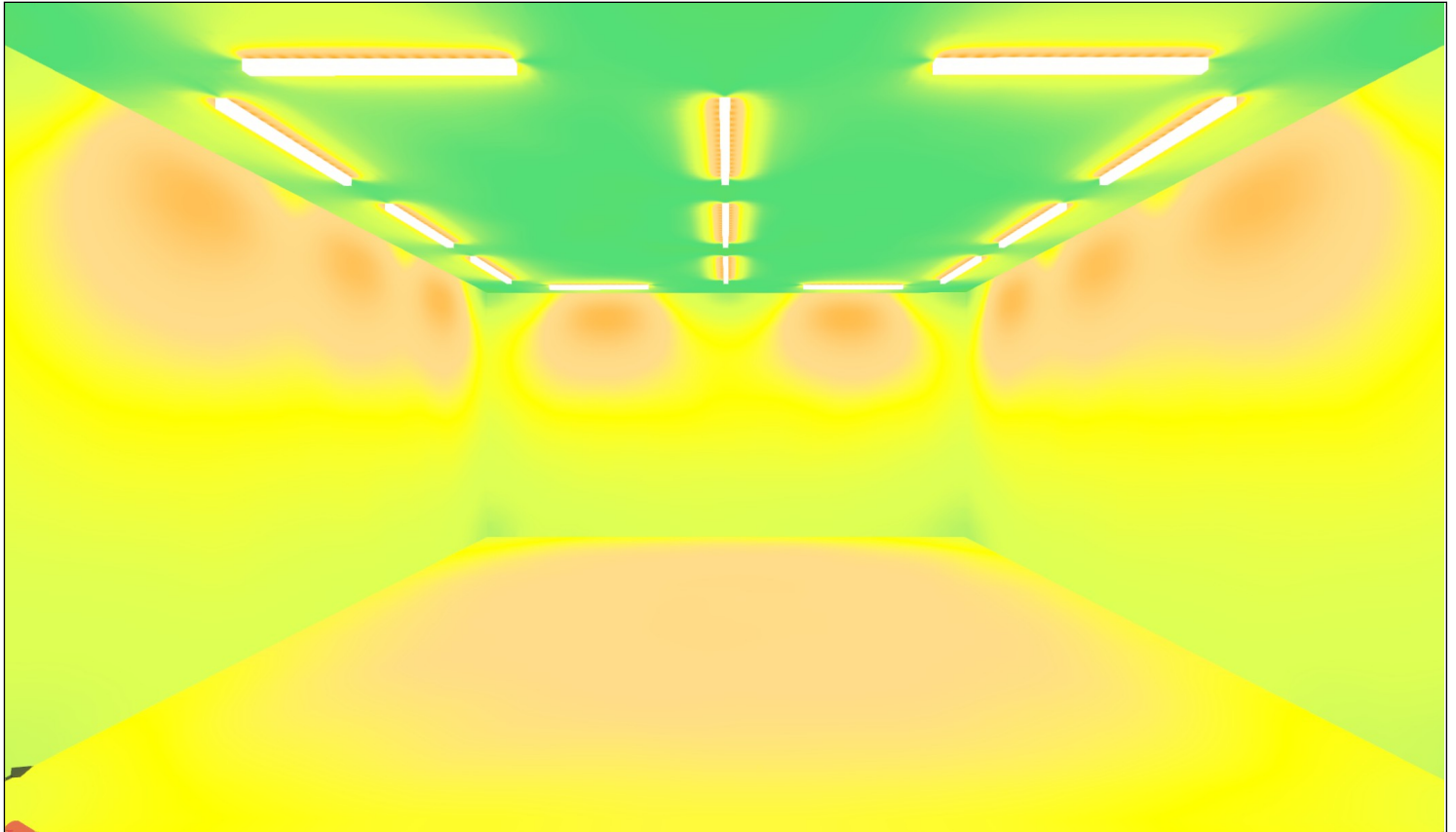


Scale: 1 : 75

## Room 1 (15)



## Room 1 (16), Illuminance values in [fc]



Clearance height: 10.000 ft, Reflection factors: Ceiling 70.0%, Walls 50.0%, Floor 20.0%, Light loss factor: 0.90

### Workplane

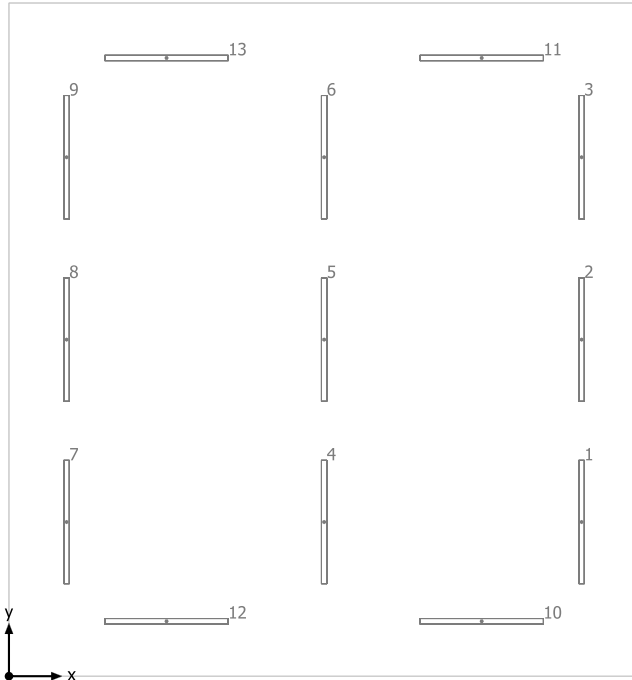
Surface	Result	Average (Target)	Min	Max	Mean/Min	Max/Min
1 Workplane 1	Perpendicular illuminance (adaptive) [fc] Height: 2.500 ft, Wall zone: 0.000 ft	106 (≥ 92.90)	69.78	119	1.52	1.71

#	Luminaire	Φ(Luminaire) [lm]	Power [W]	Luminous efficacy [lm/W]
13	EATON - METALUX (FORMER COOPER LIGHTING) - 4SLSTP5540DD-UNV 4FT LENSED LED STRIPLIGHT 5500 LM UNV TEST IS SCALED FROM IESNA LM-79-08 TEST DATA (P29646-R2)	5844	49.3	118.5
Total via all luminaires		75972	640.9	118.5

Lighting power density: 1.56 W/sq ft = 0.14 W/sq ft/10 fc (Floor area of room 409.62 sq ft)

The energy consumption quantities refer to the lights planned for the room without taking into account light scenes and their dimming levels.  
Consumption: 1450 kWh/a of maximum 1350 kWh/a

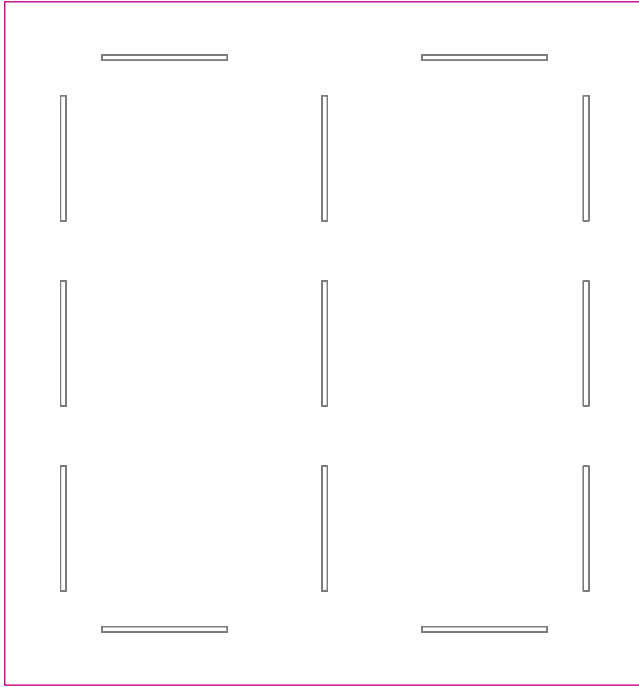
## Room 1



EATON - METALUX (FORMER COOPER LIGHTING) 4SLSTP5540DD-UNV 4FT LENSED LED STRIPLIGHT 5500 LM UNV TEST IS SCALED FROM IESNA LM-79-08 TEST DATA (P29646-R2)

No.	X [ft]	Y [ft]	Mounting height [ft]
1	17.792	4.791	10.000
2	17.792	10.458	10.000
3	17.792	16.125	10.000
4	9.792	4.791	10.000
5	9.792	10.458	10.000
6	9.792	16.125	10.000
7	1.792	4.791	10.000
8	1.792	10.458	10.000
9	1.792	16.125	10.000
10	14.687	1.708	10.000
11	14.687	19.208	10.000
12	4.896	1.708	10.000
13	4.896	19.208	10.000

## Workplane 1 / Perpendicular illuminance (adaptive)



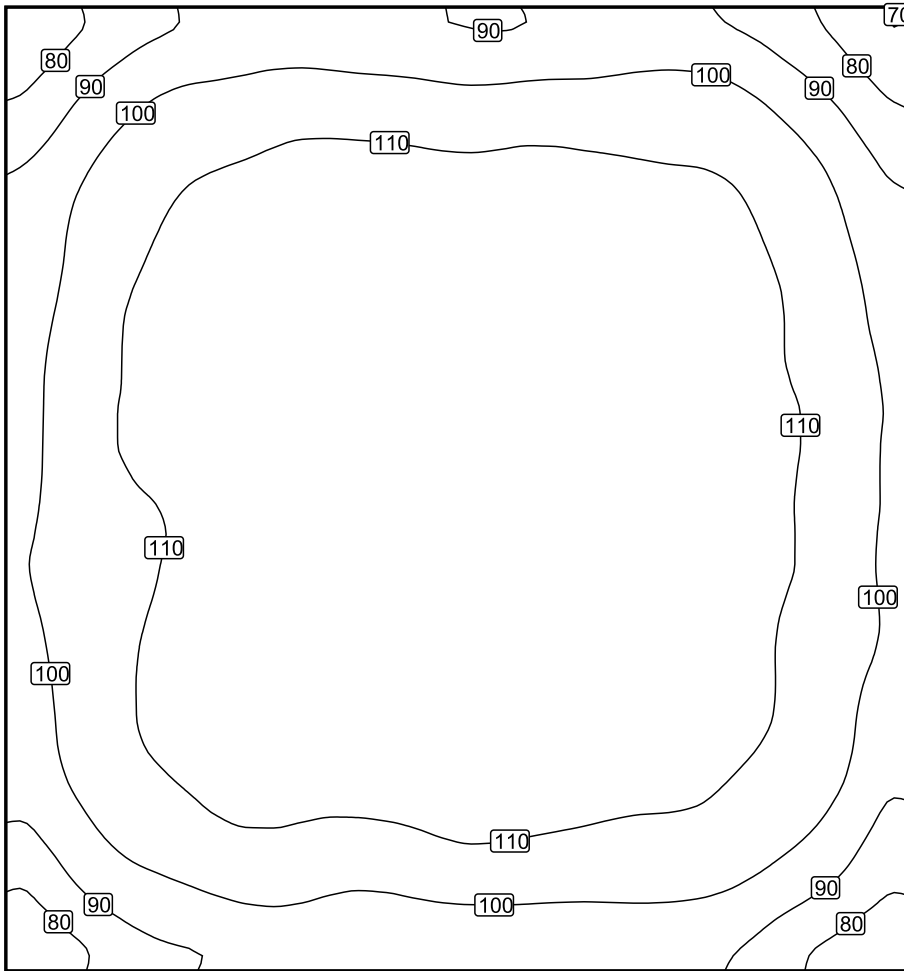
Workplane 1: Perpendicular illuminance (adaptive) (Surface)

Light scene: Light scene 1

Average: 106 fc (Target:  $\geq 92.90$  fc), Min: 69.78 fc, Max: 119 fc, Mean/Min: 1.52, Max/Min: 1.71

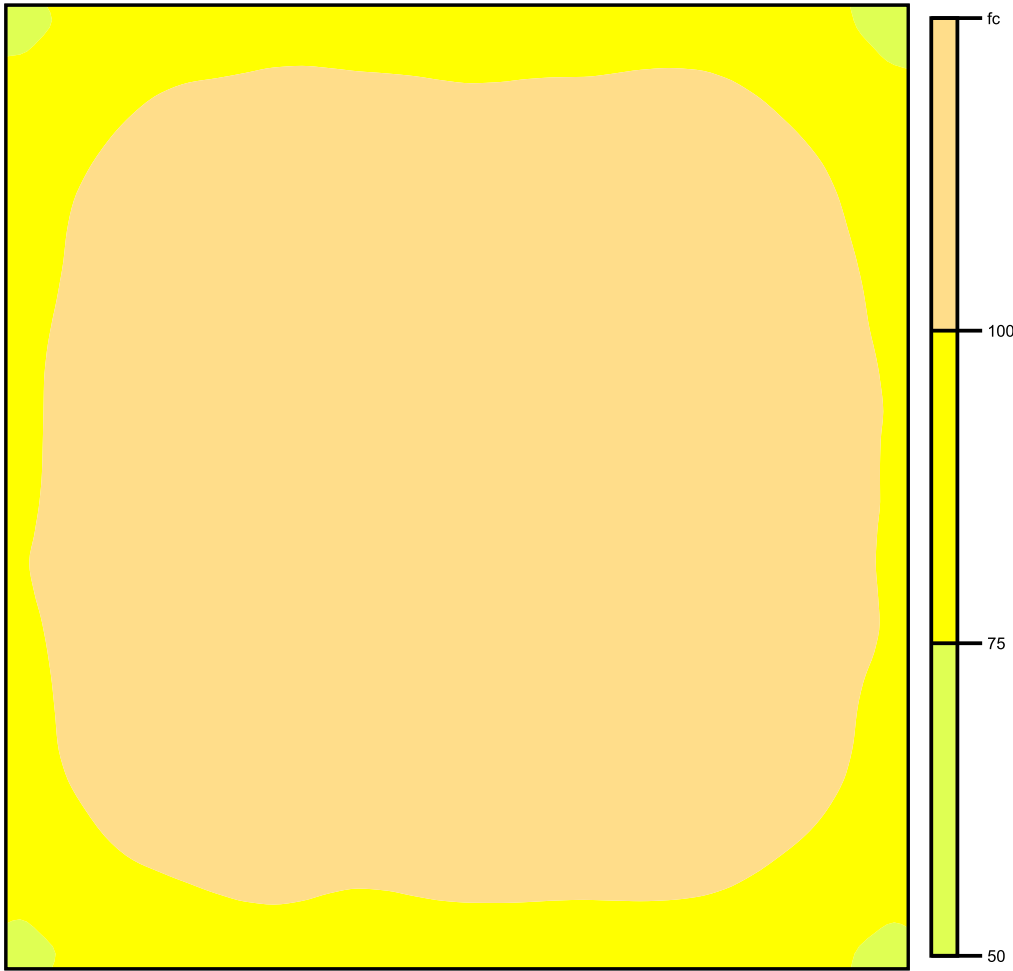
Height: 2.500 ft, Wall zone: 0.000 ft

## Isolines [fc]



Scale: 1 : 50

## False colors [fc]



Scale: 1 : 50

Value grid [fc]

+82	+96	+99	+97	+96	+98	+95	(80)
+96	+109	+112	+112	+112	+111	+108	+95
+100	+112	+114	+117	+116	+115	+112	+101
+103	+112	+113	+117	(118)	+113	+111	+104
+104	+111	+114	+117	+117	+114	+112	+103
+103	+111	+114	(118)	+117	+113	+112	+104
+101	+112	+114	(118)	+117	+115	+112	+101
+97	+108	+111	+112	+113	+111	+108	+96
+82	+95	+98	+97	+98	+98	+95	+81

Scale: 1 : 50