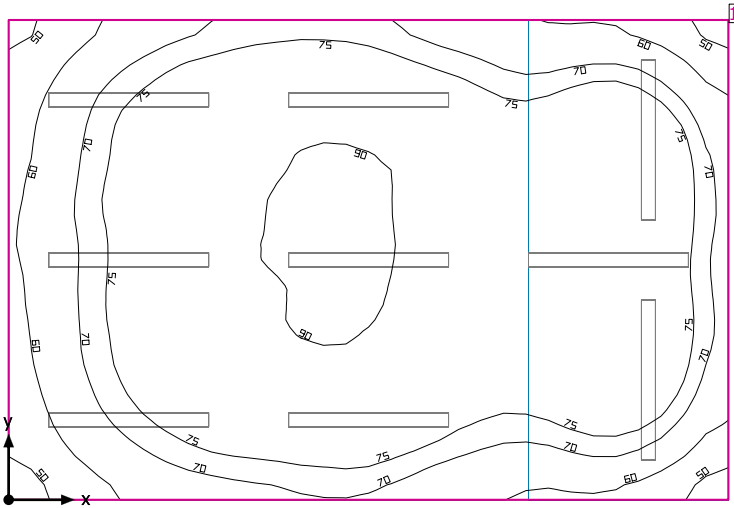


## Room 1



Clearance height: 7.850 ft to 12.051 ft, Reflection factors: Ceiling 20.0%, Walls 20.0%, Floor 20.0%, Light loss factor: 0.90

### Workplane

Surface	Result	Average (Target)	Min	Max	Mean/Min	Max/Min
1 Workplane (Room 1)	Perpendicular illuminance (adaptive) [fc] Height: 2.500 ft, Wall zone: 0.000 ft	77.0 (≥ 92.9)	45.8	92.0	1.68	2.01

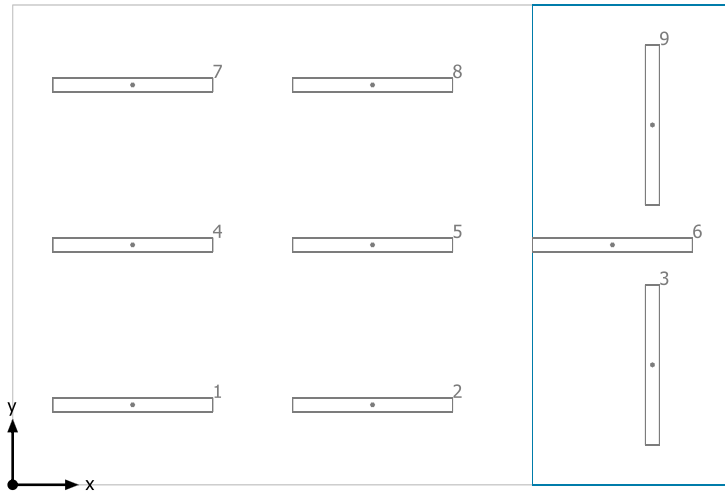
# Luminaire	Φ(Luminaire) [lm]	Power [W]	Luminous efficacy [lm/W]
9 JAMES INDUSTRY GROUP CO LTD - ZY-T8-18W1200 BINT 5000K 2-LED TUBES	4999	36.0	138.9
Total via all luminaires	44991	324.0	138.9

Lighting power density: 1.50 W/sq ft = 0.18 W/sq ft/10 fc (Floor area of room 216.01 sq ft)

Consumption: 730 kWh/a of maximum 750 kWh/a

The energy consumption quantities do not take into account light scenes and their dimming levels.

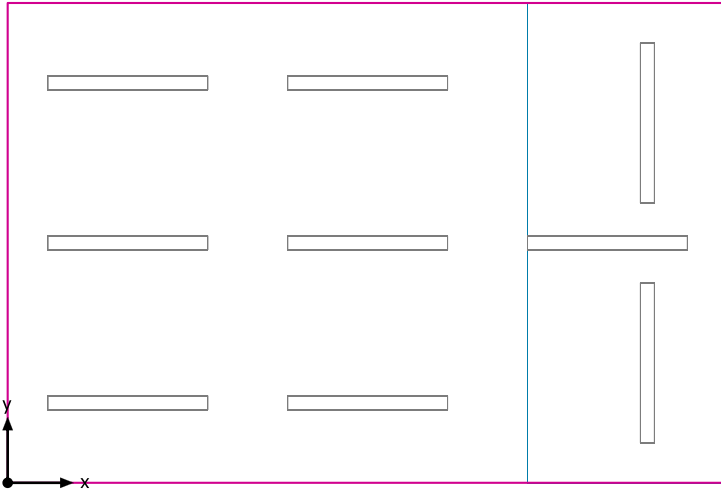
## Room 1



JAMES INDUSTRY GROUP CO LTD ZY-T8-18W1200 BINT 5000K 2-LED TUBES

No.	X [ft]	Y [ft]	Mounting height [ft]	Light loss factor
1	3.000	2.000	9.136	0.90
2	9.000	2.000	9.136	0.90
3	16.000	3.000	7.500	0.90
4	3.000	6.000	11.936	0.90
5	9.000	6.000	11.936	0.90
6	15.000	6.000	11.936	0.90
7	3.000	10.000	9.136	0.90
8	9.000	10.000	9.136	0.90
9	16.000	9.000	7.500	0.90

## Workplane (Room 1) / Perpendicular illuminance (adaptive)



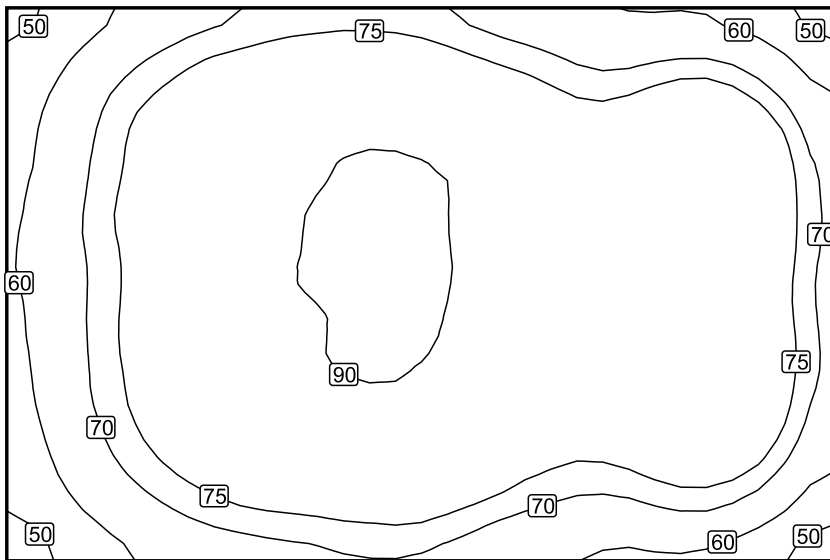
Workplane (Room 1): Perpendicular illuminance (adaptive) (Surface)

Light scene: Light scene 1

Average: 77.0 fc (Target:  $\geq 92.9$  fc), Min: 45.8 fc, Max: 92.0 fc, Mean/Min: 1.68, Max/Min: 2.01

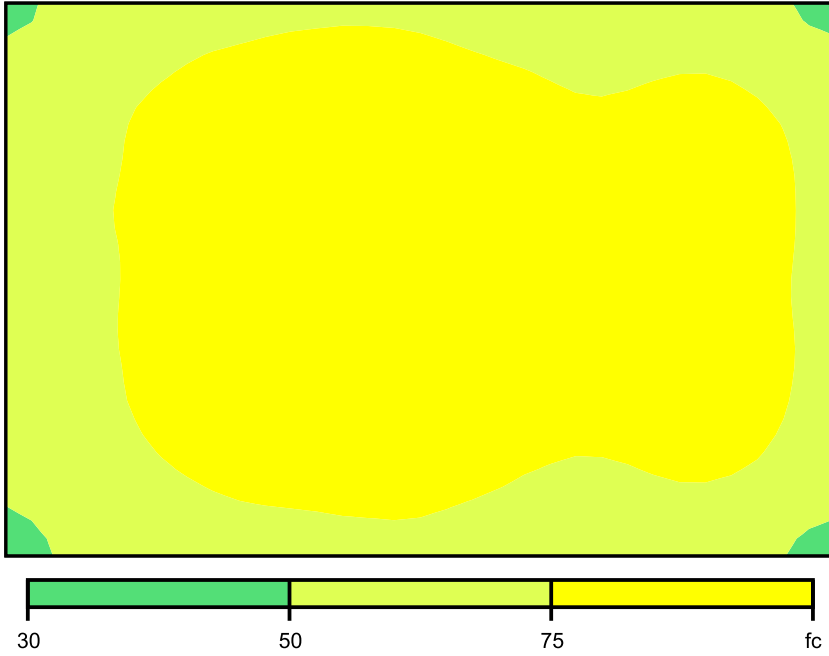
Height: 2.500 ft, Wall zone: 0.000 ft

Isolines [fc]



Scale: 1 : 50

### False colors [fc]



Scale: 1 : 50

### Value grid [fc]

+58	+72	+78	+80	+76	+70	+71	+62
+65	+80	+88	(91)	+88	+82	+88	+78
+65	+80	+88	(91)	+89	+84	+89	+77
+64	+79	+87	+89	+87	+82	+87	+77
(57)	+70	+76	+78	+75	+68	+71	+61

Scale: 1 : 50