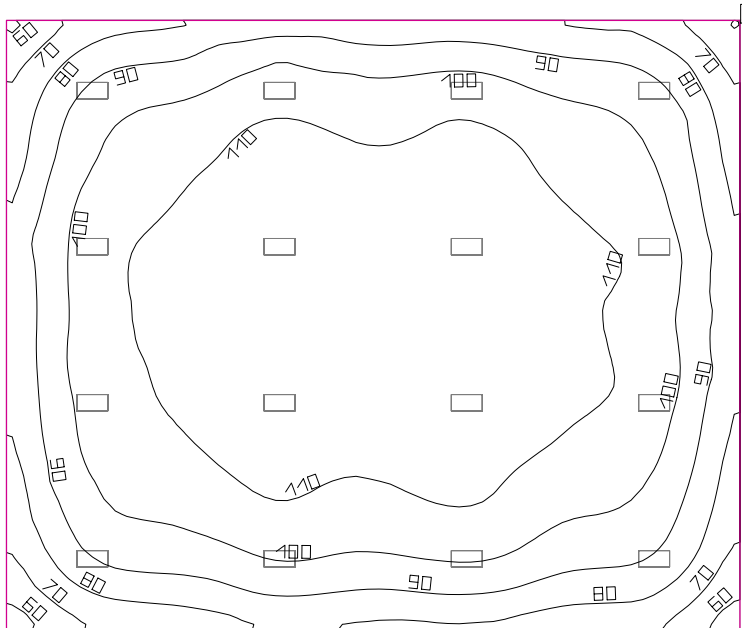


## Room 1



Clearance height: 16.000 ft, Reflection factors: Ceiling 50.0%, Walls 50.0%, Floor 20.0%, Light loss factor: 0.90

### Workplane

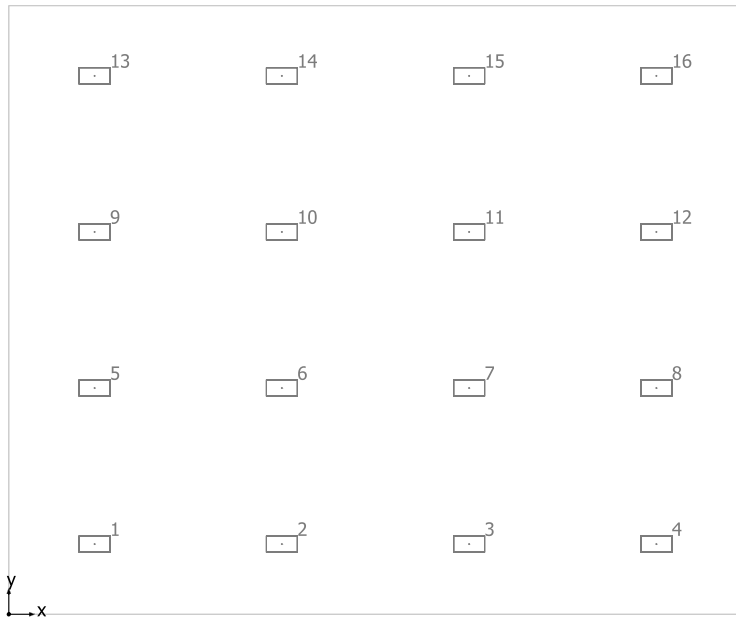
Surface	Result	Average (Target)	Min	Max	Mean/Min	Max/Min
1 Workplane 1	Perpendicular illuminance (adaptive) [fc] Height: 2.500 ft, Wall zone: 0.000 ft	101 (≥ 92.90)	55.23	121	1.83	2.19

#	Luminaire	Φ(Luminaire) [lm]	Power [W]	Luminous efficacy [lm/W]
16	JAMES INDUSTRY GROUP CO LTD - ZY-H2-110W XDZ(5000K)	16408	110.0	149.2
Total via all luminaires		262528	1760.0	149.2

Lighting power density: 0.96 W/sq ft = 0.09 W/sq ft/10 fc (Floor area of room 1833.04 sq ft)

The energy consumption quantities refer to the lights planned for the room without taking into account light scenes and their dimming levels.  
Consumption: 3950 kWh/a of maximum 6000 kWh/a

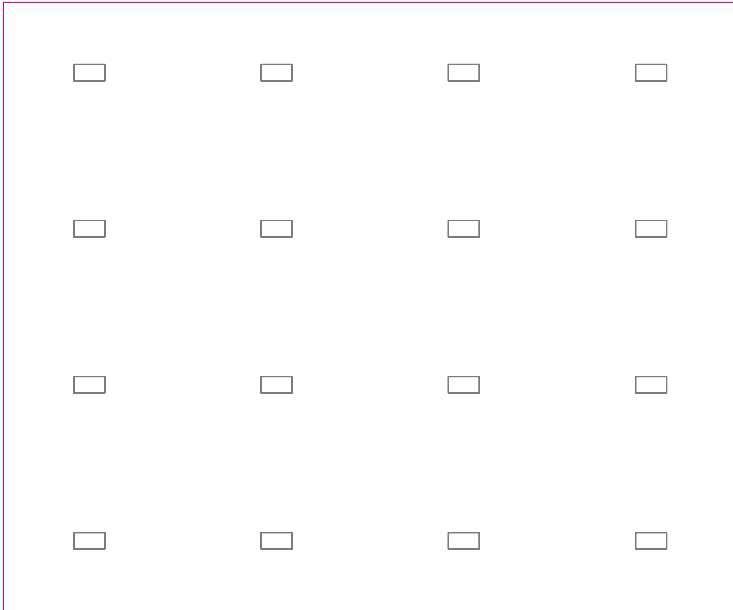
## Room 1



JAMES INDUSTRY GROUP CO LTD ZY-H2-110W XDZ(5000K)

No.	X [ft]	Y [ft]	Mounting height [ft]
1	5.500	4.500	15.500
2	17.500	4.500	15.500
3	29.500	4.500	15.500
4	41.500	4.500	15.500
5	5.500	14.500	15.500
6	17.500	14.500	15.500
7	29.500	14.500	15.500
8	41.500	14.500	15.500
9	5.500	24.500	15.500
10	17.500	24.500	15.500
11	29.500	24.500	15.500
12	41.500	24.500	15.500
13	5.500	34.500	15.500
14	17.500	34.500	15.500
15	29.500	34.500	15.500
16	41.500	34.500	15.500

## Workplane 1 / Perpendicular illuminance (adaptive)



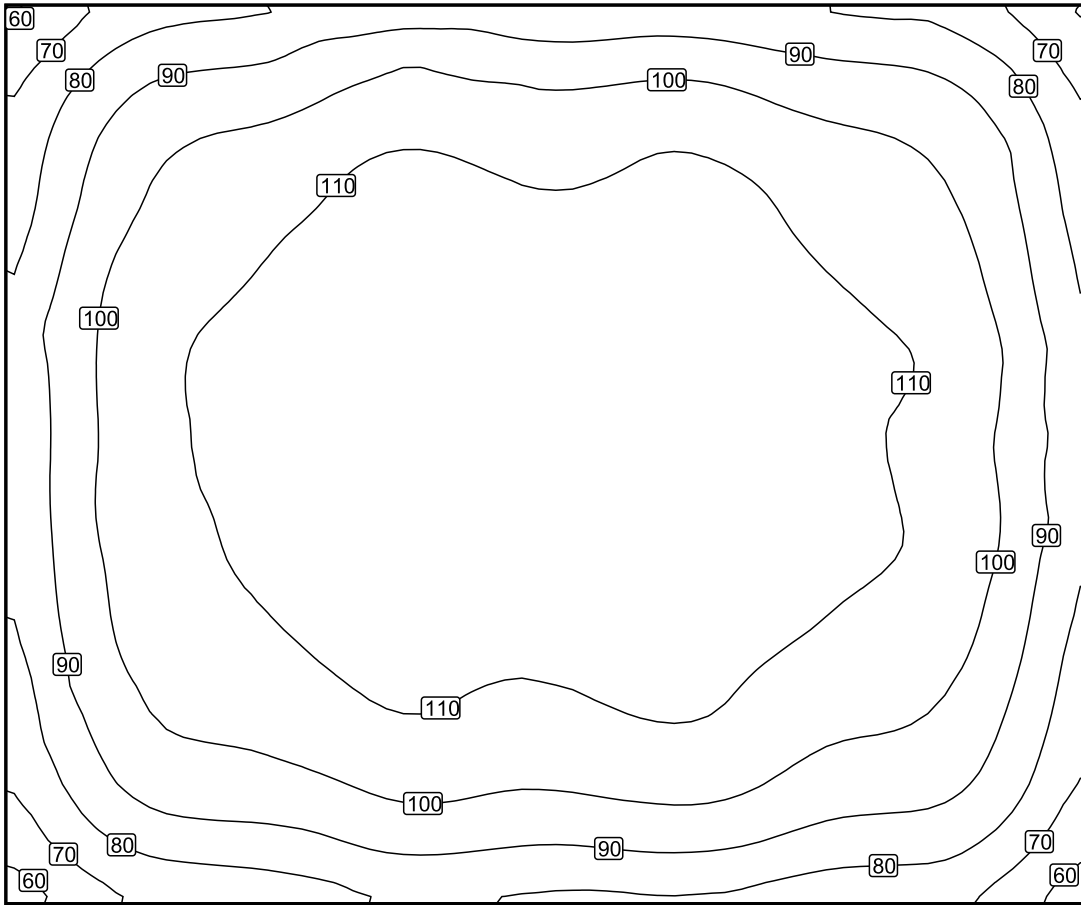
Workplane 1: Perpendicular illuminance (adaptive) (Surface)

Light scene: Light scene 1

Average: 101 fc (Target:  $\geq 92.90$  fc), Min: 55.23 fc, Max: 121 fc, Mean/Min: 1.83, Max/Min: 2.19

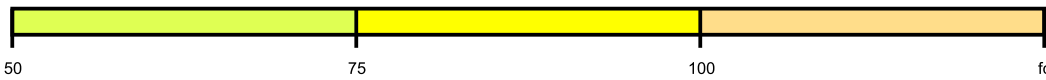
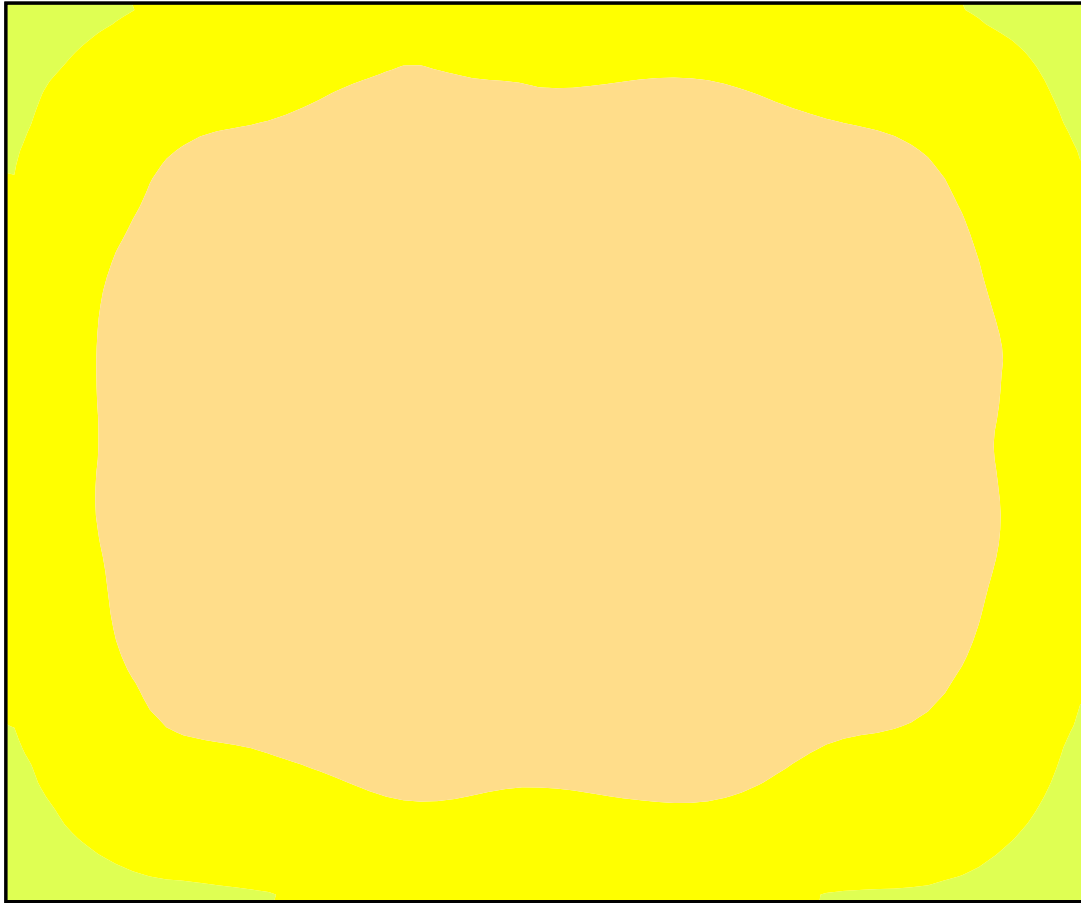
Height: 2.500 ft, Wall zone: 0.000 ft

## Isolines [fc]



Scale: 1 : 100

## False colors [fc]



Scale: 1 : 100

## Value grid [fc]

+73	+86	+89	+94	+97	+93	+94	+92	+90	+87	+73
+83	+99	+104	+109	+110	+107	+110	+108	+104	+99	+84
+88	+104	+109	+115	+117	+114	+116	+114	+109	+104	+88
+92	+108	+112	+118	(120)	+118	(120)	+118	+112	+108	+92
+90	+107	+112	+117	(120)	+118	(120)	+117	+112	+107	+90
+91	+106	+111	+117	(120)	+117	+119	+117	+112	+108	+91
+88	+103	+107	+112	+113	+112	+114	+112	+107	+103	+87
+82	+98	+100	+104	+106	+104	+107	+105	+99	+96	+81
+70	+81	+85	+88	+90	+88	+90	+88	+85	+82	(69)

Scale: 1 : 100