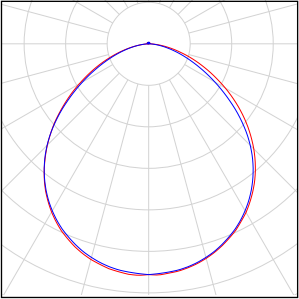


Table of contents

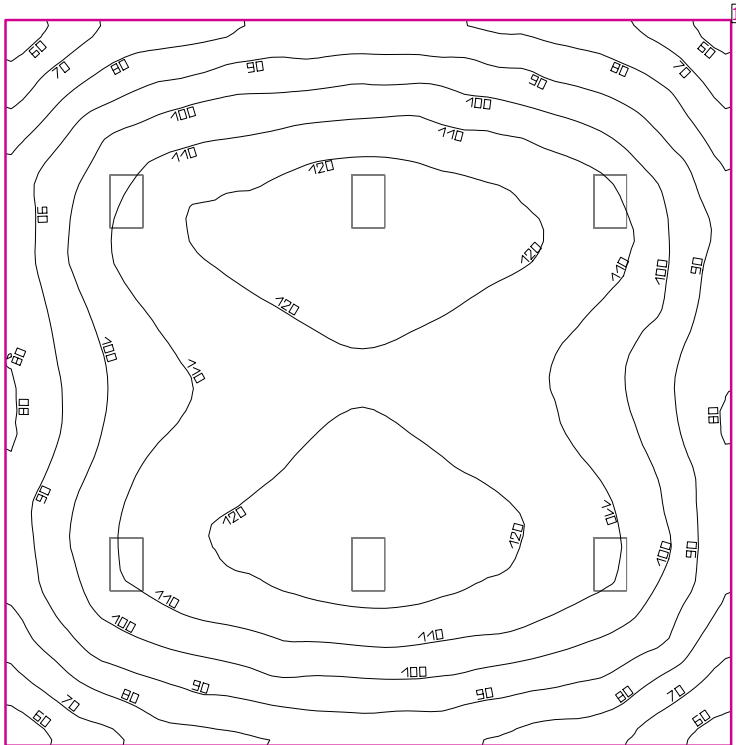
LivenLife Alpalite 110W	
Luminaire parts list.....	2
Site 1	
Building 1	
Storey 1	
Room 1	
Room summary.....	3
Luminaire layout plan.....	4

LivenLife Alphalite 110W

Quantity	Luminaire (Luminous emittance)		
6	Lithonia Lighting - IBH 15000LM SD080 MD OZ10 30K 80CRI IBH 15,000Lumens Semi-Diffuse Acylic Lens, Medium Distribution, OZ10 Driver, 3000K, 80CRI Luminous emittance 1 Fitting: 1xLED Absolute photometry Luminaire luminous flux: 14410 lm Power: 110.0 W Luminous efficacy: 131.0 lm/W Colorimetric data 1xLED: CCT 5000 K, CRI 86	See our luminaire catalog for an image of the luminaire.	

Total lamp luminous flux: 86460 lm, Total luminaire luminous flux: 86460 lm, Total Load: 660.0 W, Luminous efficacy: 131.0 lm/W

Room 1



Clearance height: 12.000 ft to 14.000 ft, Reflection factors: Ceiling 70.0%, Walls 50.0%, Floor 20.0%, Light loss factor: 0.90

Workplane

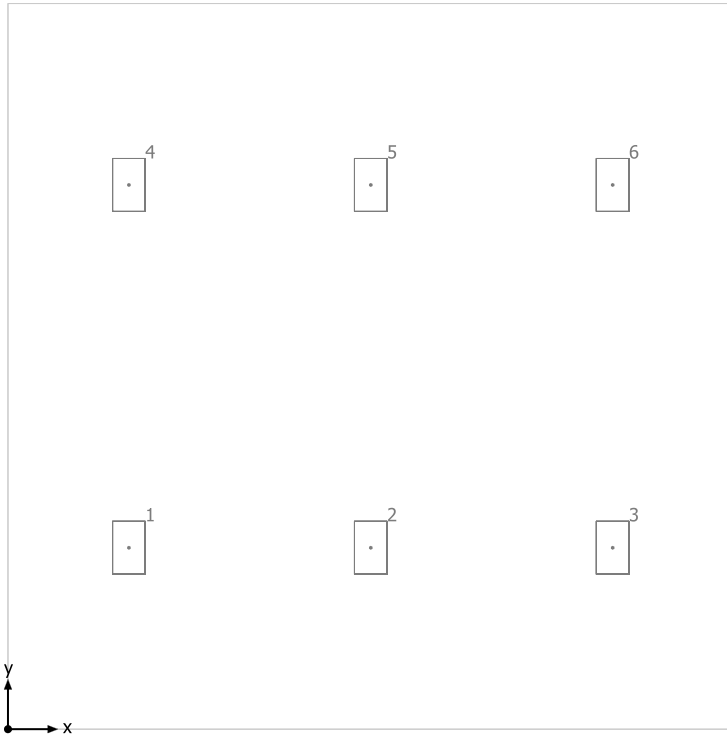
Surface	Result	Average (Target)	Min	Max	Mean/Min	Max/Min
1 Workplane 1	Perpendicular illuminance (adaptive) [fc] Height: 2.500 ft, Wall zone: 0.000 ft	103 (≥ 92.90)	53.63	129	1.92	2.40

#	Luminaire	Φ(Luminaire) [lm]	Power [W]	Luminous efficacy [lm/W]
6	Lithonia Lighting - IBH 15000LM SD080 MD OZ10 30K 80CRI IBH 15,000Lumens Semi-Diffuse Acylic Lens, Medium Distribution,OZ10 Driver, 3000K, 80CRI	14410	110.0	131.0
Total via all luminaires		86460	660.0	131.0

Lighting power density: 1.15 W/sq ft = 0.10 W/sq ft/10 fc (Floor area of room 576.01 sq ft)

The energy consumption quantities refer to the lights planned for the room without taking into account light scenes and their dimming levels.
Consumption: 1500 kWh/a of maximum 1900 kWh/a

Room 1



Lithonia Lighting IBH 15000LM SD080 MD OZ10 30K 80CRI IBH 15,000Lumens Semi-Diffuse Acylic Lens, Medium Distribution,OZ10 Driver, 3000K, 80CRI

No.	X [ft]	Y [ft]	Mounting height [ft]
1	4.000	6.000	12.000
2	12.000	6.000	12.000
3	20.000	6.000	12.000
4	4.000	18.000	12.000
5	12.000	18.000	12.000
6	20.000	18.000	12.000