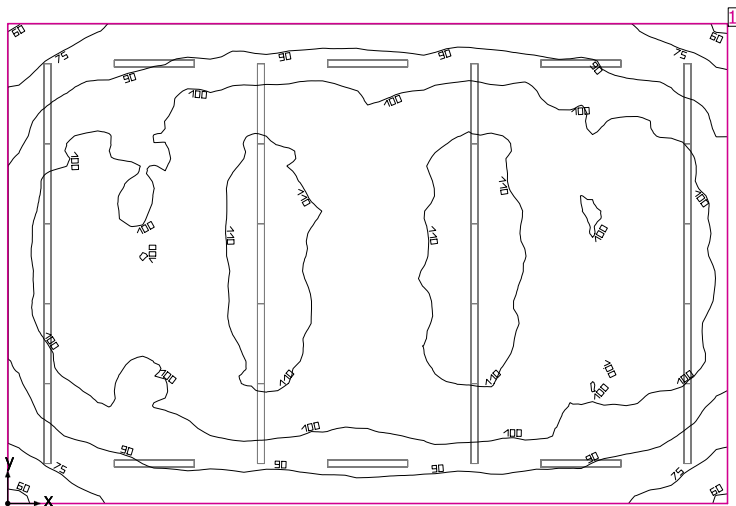


Room 1



Clearance height: 12.000 ft, Reflection factors: Ceiling 70.0%, Walls 50.0%, Floor 20.0%, Light loss factor: 0.90

Workplane

Surface	Result	Average (Target)	Min	Max	Mean/Min	Max/Min
1 Workplane (Room 1)	Perpendicular illuminance (adaptive) [fc] Height: 2.500 ft, Wall zone: 0.000 ft	98.8 (≥ 92.9)	57.6	116	1.71	2.00

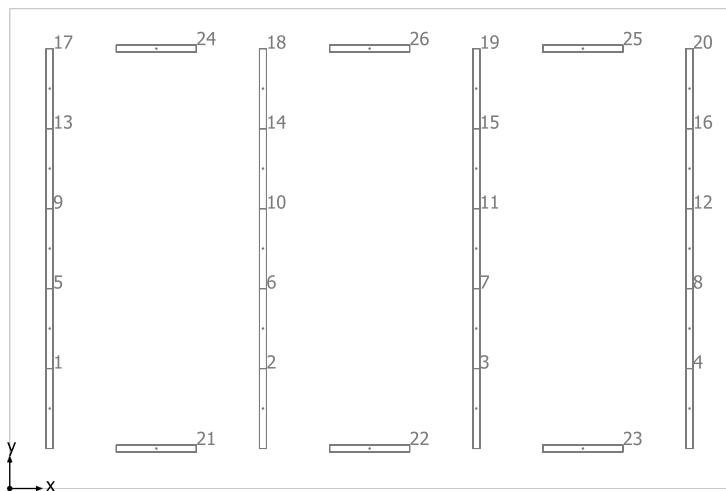
#	Luminaire	Φ(Luminaire) [lm]	Power [W]	Luminous efficacy [lm/W]
26	JAMES INDUSTRY GROUP CO LTD - ZY-T8-18W1200 BINT 5000K 2- LED TUBES	4999	36.0	138.9
Total via all luminaires		129974	936.0	138.9

Lighting power density: 1.08 W/sq ft = 0.10 W/sq ft/10 fc (Floor area of room 864.02 sq ft)

Consumption: 2100 kWh/a of maximum 2850 kWh/a

The energy consumption quantities do not take into account light scenes and their dimming levels.

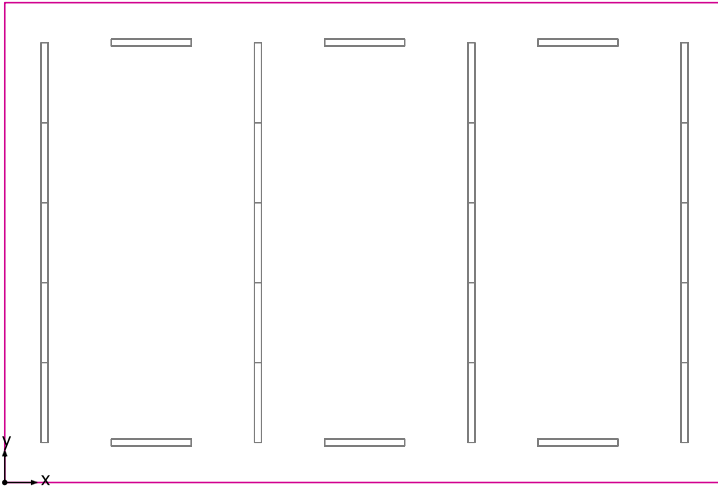
Room 1



JAMES INDUSTRY GROUP CO LTD ZY-T8-18W1200 BINT 5000K 2-LED TUBES

No.	X [ft]	Y [ft]	Mounting height [ft]	Light loss factor
1	2.000	4.000	10.000	0.90
2	12.666	4.000	10.000	0.90
3	23.333	4.000	10.000	0.90
4	34.000	4.000	10.000	0.90
5	2.000	8.000	10.000	0.90
6	12.666	8.000	10.000	0.90
7	23.333	8.000	10.000	0.90
8	34.000	8.000	10.000	0.90
9	2.000	12.000	10.000	0.90
10	12.666	12.000	10.000	0.90
11	23.333	12.000	10.000	0.90
12	34.000	12.000	10.000	0.90
13	2.000	16.000	10.000	0.90
14	12.666	16.000	10.000	0.90
15	23.333	16.000	10.000	0.90
16	34.000	16.000	10.000	0.90
17	2.000	20.000	10.000	0.90
18	12.666	20.000	10.000	0.90
19	23.333	20.000	10.000	0.90
20	34.000	20.000	10.000	0.90
21	7.333	2.000	10.000	0.90
22	18.000	2.000	10.000	0.90
23	28.666	2.000	10.000	0.90
24	7.333	22.000	10.000	0.90
25	28.666	22.000	10.000	0.90
26	18.000	22.000	10.000	0.90

Workplane (Room 1) / Perpendicular illuminance (adaptive)



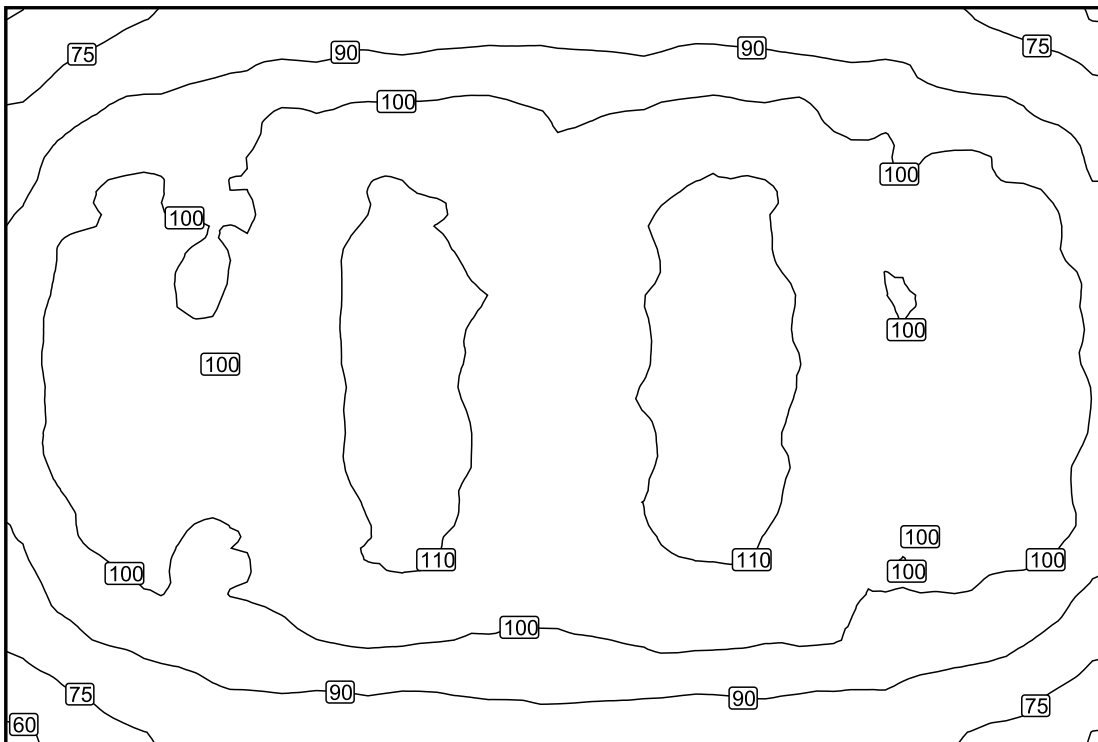
Workplane (Room 1): Perpendicular illuminance (adaptive) (Surface)

Light scene: Light scene 1

Average: 98.8 fc (Target: ≥ 92.9 fc), Min: 57.6 fc, Max: 116 fc, Mean/Min: 1.71, Max/Min: 2.00

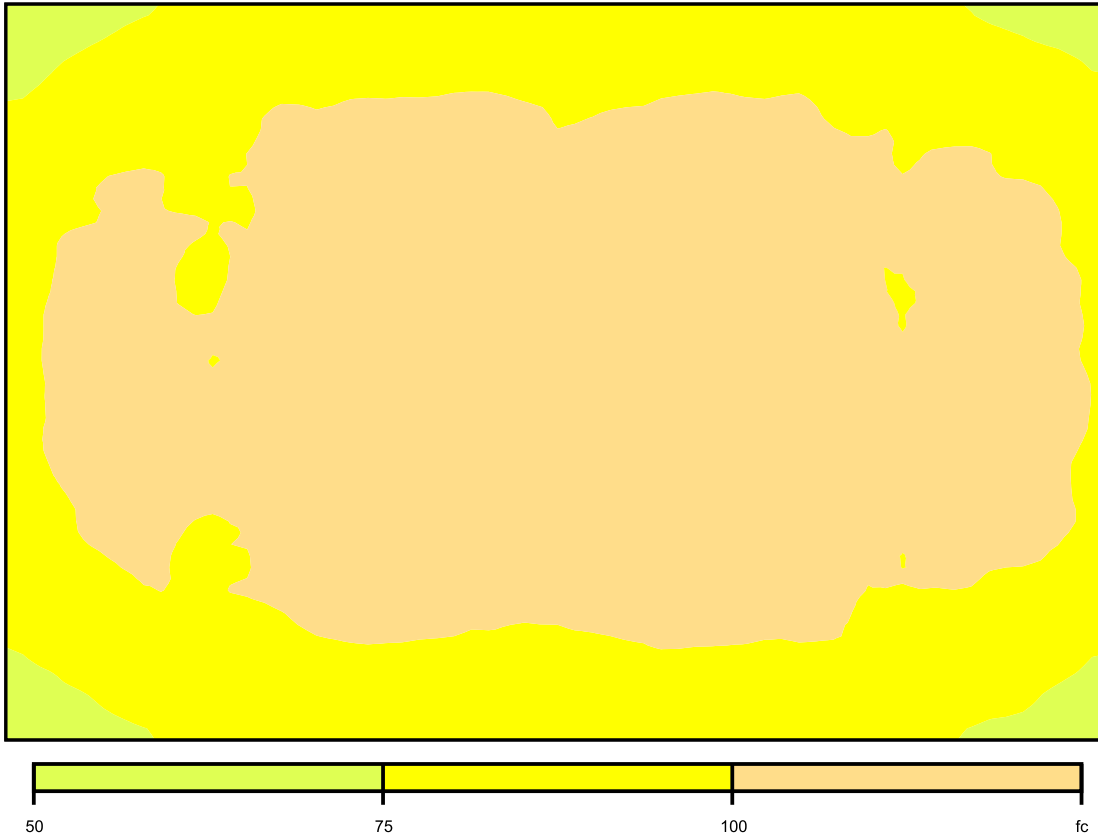
Height: 2.500 ft, Wall zone: 0.000 ft

Isolines [fc]



Scale: 1 : 75

False colors [fc]



Scale: 1 : 75

Value grid [fc]

+74	+86	+90	+91	+93	+92	+94	+90	+86	+78
+93	+98	+103	+109	+103	+105	+109	+103	+102	+95
+101	+101	+106	+114	+106	+105	+113	+103	+105	+103
+103	+102	+104	+113	+106	+107	+114	+105	+102	+105
+101	+103	+104	+112	+105	+106	+115	+104	+103	+103
+93	+100	+103	+109	+104	+105	+109	+102	+101	+96
+73	+86	+91	+90	+92	+93	+91	+90	+86	+75

Scale: 1 : 75